



hike engineering consultants

Consulting Engineers | Technical Advisors | Project Managers



Profile 2013-2023

34-D, 6th Avenue, NFC-ECHS, Phase-1, Lahore, Pakistan.

Ph: +92-42-35457772-3

Cell: +92-300-8400287

Email: hike.engg@gmail.com

Web: www.hikengg.com

Table of Contents

Profile

- Introduction.
- Registration with Government Organizations.
 - Pakistan Engineering Council (PEC).
 - Federal Board of Revenue (FBR).
 - Punjab Revenue Authority (PRA).

Human Resource Capacity

- Key Staff.
- CV's of Key Staff.

Fields of Specializations

- Structural Engineering.
- Electrical Engineering.
- Public Health Engineering.
- Architecture and Planning.
- Project Management.
- Value & Forensic Engineering.

Client Profile

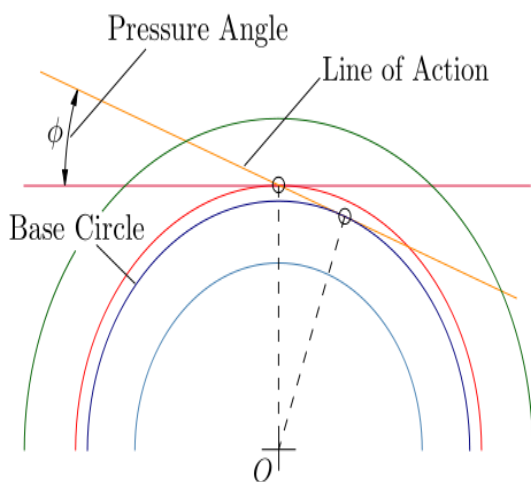
Projects

- Key Projects
- Detailed Project List of Last 05 years.



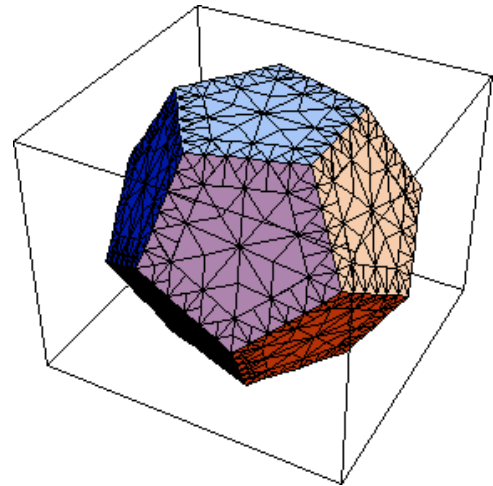
COMPANY Introduction

hike engineering consultants is a professionally owned and managed consulting engineering company. Lead and managed/run by a team of experienced professionals from various specialized disciplines, the company is committed to render the state-of-art consultancy services in different fields of engineering and allied disciplines



Having a business structure of sole proprietorship, the company offers the dynamics and flexibility of a most professional and compact organization, offering high-quality services, while avoiding the inertia of an over-centralized organization. *hike* is multidisciplinary and carries out projects from concept to execution stage through planning, engineering and management

hike engineering consultants is project-oriented and client-driven company. Quality and timely delivery are taken as "value-adders" and the company culture encourages teamwork and innovation

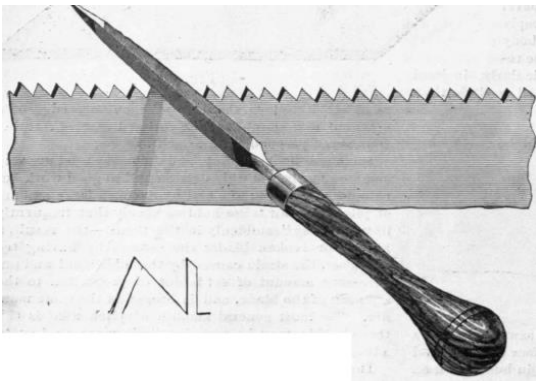


Since its inception from 2013, *hike engineering consultants*, has evolved into a multi-faceted Engineering concern and has the vision to further spawn a group of ventures with a diverse activities portfolio e.g. Project Management, EPC, Engineering, Software Development, Chemicals and Trading.

hike engineering consultants has key personnel in various disciplines and has the experience of developing large teams in the specialties around the key personnel for specified projects. It has experience of international level and has associations with national/international firms of repute. The company is capable for proving technical Services, offices and field utilities of large projects.



Engineering is a profession in which knowledge of the mathematical and natural sciences; gained by study, experience, and practice; is applied to the efficient use of the materials and forces of nature. Operating in a professional environment and organized on modern lines, the company is committed to providing high quality services employing current state of knowledge and contemporary practices



hike engineering consultants is committed to build strong partnership with Clients for achieving their goals. These objectives are achieved through *optimal use of available resources combined with* engineering and design expertise of *hike* in a professional and ethical manner.

hike engineering consultants offers advantage in terms of policy of long commitments to its Clients, a broader vision, professional expertise, evaluation with responsibility towards Environment and Sustainability, efficient performance against time and completion of projects to tight budget and schedule.



Operating in a professional environment and organized on modern lines, the company is committed to providing high quality services employing current state of knowledge and contemporary practices of the project till execution e.g Hospitals, Universities & Collages Campuses, Sports Complexes, TV/Media Centers, Urban Development, Housing Colonies, & Telecommunication Sector.



Registration With Government Organizations

1. Pakistan Engineering Council (PEC).

PAKISTAN ENGINEERING COUNCIL

Registration No: **CONSULT/2250**
Date of Registration: **12-11-2021**

Serial No **15311**
PEC-4A



**CERTIFICATE OF REGISTRATION OF PAKISTANI
CONSULTING ENGINEER**
(UNDER PAKISTAN ENGINEERING COUNCIL ACT 1976)

This is to certify that M/s HIKE ENGINEERING CONSULTANTS Address 34-D, NFC-ECHS, PHASE-1, NEAR WAPDA TOWN, LAHORE have been registered as Consulting Engineers at Serial No CONSULT/2250 of the Register of Pakistan Engineering Council with following particulars:-

Type of Ownership (021,022,023,024) **(SOLE PROPRIETORSHIP)(ENGR. MUHAMMAD MUDASSAR MUSHTAQ, CIVIL/20399)**

Field of Specialization

(Project-profile Code Nos.) **1201,1203(ii)(INDUSTRIAL COMPLEXES),1204(iii),1205(i),1208, 1210,1212,1213(i),1215(ii)(BRIDGES),1235(TEN ONLY) (FOR CIVIL, ELECT & MECH ENGG WORKS ONLY)**

SERVICE CODES:
0502,0506,0507,0509,0511,0516,0517,0518,0532,0533,0534,0535,0536,0537,0538,0539, 0540,0541,0542,0543,0544,0545,0546,0547, 0548,0549,0564,0571,0572,0575,0592,0596 (THIRTY TWO ONLY)=



Date of Issue:
08/09/2023


Registrar
Pakistan Engineering Council,
Islamabad.

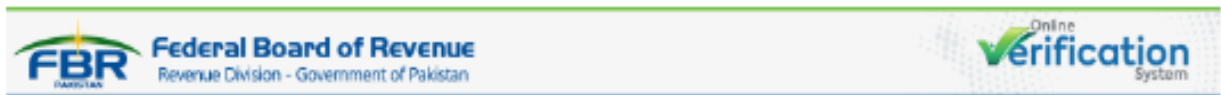
Note:

1. This Certificate of Registration shall expire on **30th June 2026** and will be renewed on payment of the required fee before 31st July, 2026.
2. Description of project profile codes is shown on reverse.



2. Federal Board of Revenue (FBR).

6/11/2021



Online NTN/STRN Inquiry

Printed On: 6/11/2021 9:58:55 AM

Registration No 3310026189327
Reference No 2573606-0
STRN
ST Registered On
Name MUHAMMAD MUDASAR MUSHTAQ
Category Individual - Pakistani Male
PP/REG/INC No.
Email mmm****aq@***il.com
Cell 00923**840**87
Address 34 - D, NFC - ECHS, PHASE - 1, NEAR WAPDA TOWN, Lahore
Registered On 21-JAN-2006
Tax Office RTO FAISALABAD
Registration Status Income Tax: Active

| Sr. | Business/ Branch Name | Business/ Branch Address | Principal Activity |
|-----|------------------------------|--|--|
| 1 | Hike Engineering Consultants | 34 - D, NFC - ECHS, PHASE - 1, NEAR WAPDA TOWN, Lahore | 711000-Professional, scientific and technical activities/Architectural and engineering activities and related technical consultancy/Architectural and engineering activities and related technical consultancy |



3. Punjab Revenue Authority (PRA)

7/15/2021

Details



Date : 15-07-2021

Time : 11:37:36

PNTN **2573606-0** Category **INDIVIDUAL**
Name **MUHAMMAD MUDASAR MUSHTAQ**

Business Name

| Sr. | Business Name |
|-----|------------------------------|
| 1. | HIKE ENGINEERING CONSULTANTS |

CNIC/Reg No. **33**026*89****
Address **34 D,6TH AVENUE,NFC-ECHS, PHASE-1, LAHORE**
Block/Sector/Road **NFC-ECHS, PHASE-1,** City **LAHORE**
Service Category **TECHNICAL SCIENTIFIC & ENGINEERING CONSULTANT INCLUDING TECHNICAL INSPECTION AND CERTIFICATION SERVICES, ,9815.5000**
Date of Registration with PRA **7/15/2021 12:00:00 AM**
Operational Status at PRA **Active**

[Print](#)

[Back](#)



STAFF

List of Staff

| Name | Designation | Education | Experience (Years) |
|---------------------------|--|------------------------------|-----------------------|
| Muhammad Mudassar Mushtaq | CEO/Principal Engineer Structural Design | M.Sc. Engg. (Structures). | 23 |
| Muhammad Arif Mirza | Principal Engineer Mech/HVAC/Plumb Design | M.Sc. Engg. (Mech). | 24 |
| Liaqat Ali Mirza | Principal Engineer Electrical Design | B.Sc. Engg. (Electrical). | 47 |
| Joshua Shakil | Structural Engineer | B.Sc. Engg. (Civil). | 02 |
| Sameed Ahmad | Structural Engineer | B.Sc. Engg. (Civil). | 02 |
| Muhammad Usama Khalid | Manger Co-ordination & Planning | B.Sc. | 09 |
| Hassan Shafiq | Account Officer | B. Com. | 12 |
| Muhammad Saleem Saqib | Laboratory Manager | B.A (PU,Lahore) | 09 |
| Shabir Ahmad Shahid | Sr. Site Engineer | DAE Civil | 23 |
| Muhammad Shoaib | Sr. Site Engineer | DAE Civil | 15 |
| Muhammad Lall Raza Baig | QS / Inventory Officer | DAE Civil | 14 |
| Naveed Anwar | Sr. Site Engineer | DAE Civil | 19 |
| Muhammad Abrar Majeed | Site Engineer | DAE Civil | 04 |
| Mahmood Azam | Sr. Drawing Engineer | DAE Civil | 18 |
| Hanif Rehmat | Sr. AutoCAD Draftsman | DAE Civil | 16 |
| Muhammad Shahrukh | Laboratory Technician | DAE Civil | 05 |
| Muhammad Ashfaq | WPO | BA | 10 |
| Muhammad Faizan | AutoCAD Draftsman | DAE Arch. | 03 |
| Muhammad Bilal Fareed | AutoCAD Draftsperson | DAE Civil | 05 |
| Hira Saeed | AutoCAD Draftsperson | DAE Civil | 01 |
| Muhammad Ali | AutoCAD Draftsperson | DAE Civil | 01 |
| Bilal Hussain | Driver | Matric | 11 |
| Muhammad Salman | Driver | Middle | 05 |



STAFF

Brief Review of Key Staff

Muhammad Mudassar Mushtaq

Mudassar has been registered professional engineer since 2000 having more than 21 years of professional experience in the field of civil engineering with specialization in structural analysis/design. This field includes the rehabilitation and upgrading works of barrages, canals and distribution system, design of public buildings, hospitals, housing schemes, mosques, universities, overhead water tanks, structures for water supply schemes, highway bridges, schools, microwave towers, under passes, industrial structures.

Possess skill for detailing and supervision of structural plans for a variety of reinforced concrete and steel structures. Also possess the skill for preparation of Bills of Quantities, Engineer's Cost Estimates and Bar Bending Schedules. Have also worked on building and highway construction sites, for site supervision.

Familiar with international codes of practice and design standards such as those of the American Concrete Institute (ACI), American Institute of Steel Construction (AISC), Uniform Building Code (UBC), International Council of Building Officials (ICBO) and the British Standards Institution (BSI).

Possesses skill for use of computer-based techniques for structural analysis and design. Familiar with use of specialized application software like STAAD-Pro, SAP, ETABS, SAFE, AutoCAD, Excel and Word are the computer software that I use for analysis/design of these structures Possesses basic knowledge of drafting tool.

Muhammad Arif Mirza

Arif has 22+ years of experience as Plant Manager, Operations Manager, Head of Maintenance, Maintenance Engineer, Assistant Manager, Project Engineer, Shift Engineer in the industrial sector of Pakistan and abroad. Worked as Engineering professional in the industrial sectors of Pakistan and abroad. The main industry include Thermal power stations, Petrochemicals, Refineries, Oil and gas pipelines, Energy Planning conservation and development, Chemicals, Ceramics, Engineering industry, Cement industry, Textile industry, Fertilizers industry, Chemical plants, Renewable energy sources and Systems etc.

The key areas of services include Feasibility studies, Technical studies, Industrial design, Engineering design, Mechanical design, Process Design, Power Plants Engineering,



Supervision/inspection of equipment installation, Project management (on behalf of owner), Technical assistance and advisory services, Process evaluation & selection, Operations and maintenance, Maintenance planning, Quality control, Professional trainings etc. IOSH Managing Safely at work V 5.0 Certified.

Authorized as Plant Safety Controller (Safety Rules BEI 2.0/3.0) since 2013 to-date
Take part in the plant commissioning and COD activities according to the guidelines of PPA (Power Purchase Agreement), GSA (Gas Supply Agreement), FSA (Fuel Supply Agreement), EPC, O&M contracts of 404 MW Uch Power Plant and 32 MW AEL DESCON Power plant.

Worked on the Power plants including Steam turbines (GE 200 MW, Fuji 140 MW,), Boilers (triple pressure) of capacity 220 tons 95 bar 530 C, 25 ton 20 bar 500 C, 10 tons 15 bar 480 C, 5 tons etc. Gas Turbines (GE 130 MW), HFO engines (Wartsila, MAN, Niigata 2 ~ 20 MW capacity), Gas engines, associated BOPs and Auxiliaries.

Worked overseas on the oil and gas facilities in UAE, Malaysia, Saudi Arabia and Bahrain both onshore and offshore installations. Worked as Project Manager in the Plant modification activities like Air handling and filtration system, Exhaust system, radiator efficiency improvement, 10 ton crane uplifting project at 32 MW AEL DESCON Power Plant.

Self-starting, goal-oriented strategist whose confidence, perseverance and vision promote success, Strong safety and work ethics, Team Player, Positive attitude, Ability to deliver solution, Ability to embrace and deliver change when required, Excellent verbal and written communicator Computer literate, having good command on CMMS (MP2, API Pro, MAXIMO), Eclips-II (PTW system), CAMEL RACE (Performance Monitoring software) , PRIMA Vera 6.0 Project Management, MS Project, MS office & Windows.

Well aware about the Quality & EHS standards ISO 9001:2000, ISO 14000, OHSAS 18001, ADNOC CIS-15/17/19. AIMS, 5S and TPM. Well aware about the IPPs Contractual matters (PPA, FSA, GSA, O&M agreements and supplier contracts). Expert in Project Management of PEIR audits, RCM, RBI, FMECA studies in Power and Oil & Gas sector. Reasonable understanding of Financial matters like costing, BOQ, Annual budgets preparations etc.

Expert in close monitoring of plant performances and KPIs like Gross & Net Generation (MWh), Gross & Net Heat Rate (KJ/KWh), Operational Heat Rate Factor (%), Gross & Net Efficiency (%), Plant Load Factor (Gross Generation Based) (%), Commercial Load Factor (%), Shutdown Period (Hours), Shutdown Ratio (%), Outage Duration (Hours), Outage Ratio (%), Service Factor, Planned Outage Factor, Unplanned Outage Factor, Shutdown Factor, Available Capacity Ratio (%), Availability/Availability Factor (%), Reliability (%), Utilization Factor (%), Starting Reliability (%), Complex Derating Factor (%). (Monitoring plant efficiency / Heat Rate), close monitoring of lube oil performance & execution of plant equipment's maintenance activities.



Appreciation letter in 2015 from UPL in recognition to the Uch-II plant performance enhancement (Saving of 36,000 KWh per day).

Three Appreciation letters in 2010 from DESCON on professional performance in operational, contractual and plant COD activities.

Liaqat Ali Mirza

Liaqat is Professional Electrical Engineer from UET Lahore with 47 years of experience in design, erection, commissioning and supervision of Substations. Having experience in LV, MV, HV, EHV system and is self assured that my skills and my previous experience are a perfect match for the areas of engineering/automation and energy assignments. I have working strength in electrical engineering with focus in:

Engineering Design activities, Operational Electrical, Electronics, Automation/Controls.

Earthling systems performance testing.

Substation lighting system design and installation testing.

I have worked in Lahmeyer International, Abu Dhabi, ZALCO Industries, Pakistan, Saudi Consolidated Electric Co., Saudi Arabia and in WAPDA



CV's OF KEY STAFF

Refer to Annex-A for detailed Curriculum Vitae of Key Staff with necessary academic and related certificates/documents.



LIST OF SOFTWARE BEING USED FOR DESIGNING

We at *hike engineering consultants* use the following software for analysis, design & drafting purpose.

| | | | |
|----|--|----------------|---|
| 1 | SAP 2000 | 2019 | CSI, Computers and Structures Inc., USA. |
| 2 | ETABS | 2021 | CSI, Computers and Structures Inc., USA. |
| 3 | SAFE | 2016 | CSI, Computers and Structures Inc., USA. |
| 4 | STAAD Pro | 8i | Bentley Systems, Incorporated, USA. |
| 5 | STAAD Pro, Advance Foundation | 8i | Bentley Systems, Incorporated, USA. |
| 6 | STAAD Pro, Advance Concrete | 8i | Bentley Systems, Incorporated, USA. |
| 7 | AFES (Automatic Foundation Engineering System) | 2.5 | GS Engineering and Construction, South Korea. |
| 8 | Quick RWall | 4.00.0012 | IES Inc., USA. |
| 9 | Quick Concrete Wall | 4.00.0012 | IES Inc., USA. |
| 10 | Quick Footing | 4.00.0012 | IES Inc., USA. |
| 11 | Quick Masonry | 4.00.0012 | IES Inc., USA. |
| 12 | Slab Design | 2012 | Prism Codic, Pakistan. |
| 13 | Beam Design | 2012 | Prism Codic, Pakistan. |
| 14 | Foundation Design | 2012 | Prism Codic, Pakistan. |
| 15 | Excel Design Sheets | - | - |
| 16 | AutoCAD | 2013,2015,2021 | Autodesk Inc. USA. |
| 17 | SketchUp Pro | 2021 | Trimble Inc, USA. |
| 18 | Microsoft Office | 2019 | Microsoft Inc. USA. |



FIELDS OF SPECIALIZATION

hike engineering consultants, having experts in almost all civil engineering disciplines, specializes in the fields of:

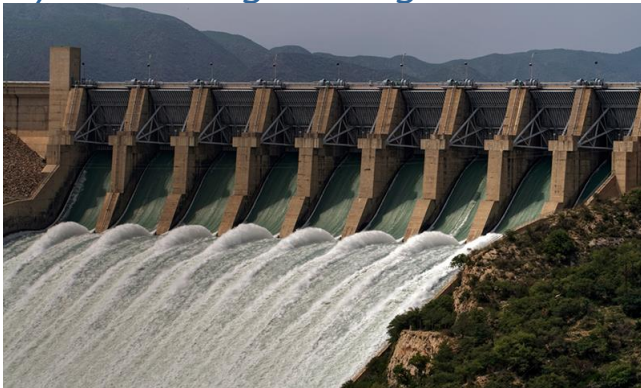
Structural Engineering



- Steel and Concrete Structures.
- Industrial facilities and Process Buildings.
- Pipe Racks.
- Table Top & Elevated Structures.
- Warehouse (with or without Shell structural system)
- Prilling Towers & Silos
- Underground Services for Plants
- Equipment Foundations.
- Pile Foundations.
- Tank Foundations.
- Compressor and Turbine Foundations (including dynamic analysis).
- Elevated and Underground Tanks.
- High Rise & Residential Buildings.
- Bill Boards & Sign Boards
- Steel structures and Transmission towers
- Rehabilitation & Structurally Strengthen of Structures
- Investigation & Structurally Strengthen of Building(s) after Natural or other hazards, like fire, earthquake, wind etc.
- Strengthen of Existing Structurally failed Building(s)
- Rehabilitation & Strengthen of Old and Historic Buildings
- Special Geometric Design
- Large Span Shells
- Domes, Skylights, Minarets, Chimneys etc.
- Steel Towers and Masts

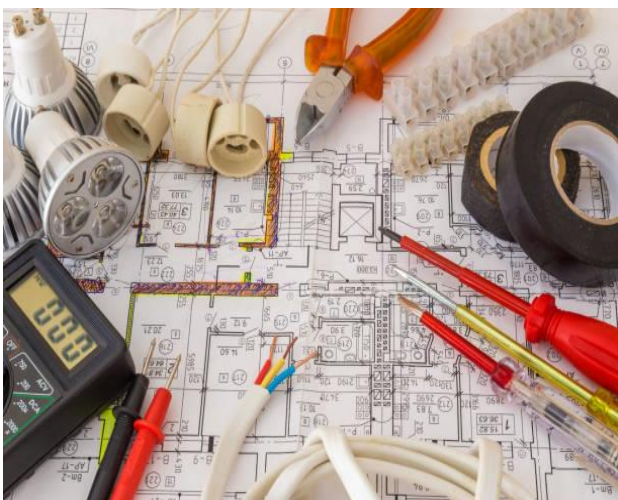


Hydraulic Engineering



- Hydraulic Design of Main Canal & Distribution System including
- Head & Cross Regulators.
- Super-Passage/Syphon.
- Fall
- Multi-Level depressed Culvert.
- Single & Multi Span Bridge/ Culvert

Electrical Engineering



- Electrical (Commercial & Industrial) design
- Solar System design.
- HT/LT switchgear quality inspection.
- Quality assurance of electrical & solar installation work.
- Electrical Safety inspection and power quality concerns.
- System maintenance planning.
- Engineering staff training for electrical design and development work.
- Cost reduction in utilities in process machines

Public Health Engineering



- Water Supply System (Commercial & Industrial) Design.
- Sewerage System (Commercial & Industrial) Design.
- Storm Water Design.
- Drainage System Design.
- Design of Industrial Effluent.



Architecture and Planning



Project Management



- Health Care Buildings.
- Educational Buildings.
- High-rise Buildings.
- Industrial Buildings.
- Low Cost Housing.
- Residential Communities

- Construction Contract.
- Full Time/Resident & Top Supervision.
- Project Identification.
- Technical and Financial Feasibility Studies.
- Budgetary Planning.
- Development of Concept Plans.
- Design Development.
- Development of Technical Specifications.
- Preparation of Bidding Documents.
- Preparation of Bill of Quantities.
- Preparation of Estimates of Most Probable Cost.
- Bidding Stage Services.
- Contract Administration.
- Preparation of Project Completion Report

Value & Forensic Engineering



- Arbitration and Claims.
- Market value of the Building(s).
- Value of Building(s) after Natural or other hazards, like fire, earthquake, wind etc.
- It is difficult to define the exact nature of “Forensic Engineering” so the exact nature may be tailored to the



individual needs of each project

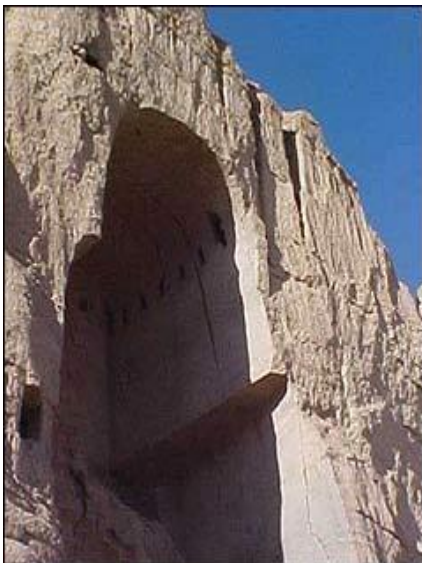
Laboratory and Filed Testing



- Technical Audit.
- Construction Monitoring & Quality Control.
- Ferro-Scanning, Schmidt Rebound Hammer, Core Extraction and Testing, Pull Out Test.
- Ultrasonic Pulse Velocity, Corrosion Analysis.
- Cement, Concrete, Soil, Asphalt & Chemical Testing.
- Soil Exploration & Investigation.
- Fire Investigation.



CLIENT PROFILE



hike engineering consultants, feels honor to work for following valued clients.

- Capital Development Autho. (CDA)
- Capital Development Autho. (CDA)
- Lahore Develop Autho. (LDA)
- Faisalabad Develop Autho. (FDA)
- Pakistan Public Works Department (Pak PWD).
- Irrigation Deptt. Govt. of Punjab.
- Irrigation Deptt, Govt. of Balochistan.
- Higher Education Comm. (HEC)
- Pakistan Telecomm Company Limited (PTCL).
- National Fertilizer Corporation (NFC).
- Nasheman-e-Iqbal Co-operative Housing Society Limited, Lahore.
- Punjab Industrial Estate (SIE).
- Faisalabad Industrial Estate Development & Management Company (FIEDMC).
- Forman Christian (FC) College.
- Walled City of Lahore.
- Lahore Stock Exchange.
- The Bank of Punjab.
- Sindh Industrial Trading Estate (SITE).
- Defense Housing Authority (DHA).
- Punjab Health Commission.
- CMH Kharian.
- CMH Multan.
- Suzuki Motors.
- Metals and Engineering Corporation, Ethiopia.
- Atlas Group.
- Shell Petroleum.
- Coca Cola Beverages.
- Pepsi Cola Beverages.
- FMC Corporation.



-
- D5 Architecture, USA.
 - Nimir Industrial Chemicals.
 - Nishat Group of Industries.
 - Style Textile (Pvt) Limited.
 - Interloop Limited.
 - Sukkur Beverages Limited.
 - Pharmagen Limited.
 - Diamond Group of Industries.
 - United Auto Industries.
 - Health Capsule Pakistan.
 - Deelux Sports (Pvt.) Ltd.
 - International Petrochemicals.
 - Infinity Engineering.
 - PDH Pharmaceuticals.
 - Gallop Pharmaceuticals.
 - Marion Pharmaceuticals.
 - GT Pharma.
 - PrismaTech (Pvt.) Limited.
 - Brighto Paints.
 - Ravi Autos (Pvt.) Limited.
 - Terranova (Pvt.) Ltd.
 - Amreli Steel.
 - Shezan International Ltd.
 - Fauz Engineering Limited.
 - AS Steel (Pvt.) Limited.
 - Deelux Sports (Pvt.) Ltd.
 - Bahria Town.
 - Jamaat-e-Islami, Pakistan.
 - Al-Khidmat Foundation.
 - Lahore Chughtai Lab
 - The Punjab School.
 - ARBT Foundation.
 - Central Park Housing Society.
 - Qurta City.
 - Urban Developers (Pvt.) Ltd.



KEY PROJECTS

Industrial

- New Construction/Extension of Construction 7AVCA and Paracetamol Plant at Pharmagen Limited, Ferozepur road, Lahore.
- Construction of 12,000 TPD New Sugar Plant at Sabure, Beles-1 and Beles-2 of Federal Democratic Republic of Ethiopia.
- Evaluation/Vetting the Structural Design of existing buildings including Main Production Area, Denim Sampling, Finished Goods Store, Boiler Shed, Steel Stairs, Hostel Buildings, ETP, Admin Block, Canteen Area, Warehouse, Engineering Block etc. at Interloop HD-3, Manga Riawind Road, Lahore.
- Evaluation/Vetting the Structural Design of existing buildings including PEBs, Main Production Area, Finished Goods Stores, Shell Structures, Boiler Houses, Industrial Steel Stairs, Hostel Blocks, Admin Block, Canteen Area, Warehouse, etc. at Style-1, Style-Highnoon, Style-Defense road, Lahore.
- Structural Design of Grid Station and Power House at Interloop HD-5, Khurrianwala, Faisalabad.
- Design of New Pet Line with other facilities like Transformer room, sugar goodan, sewerage system etc for M/s Sukkur Beverages (Pvt.) Limited, Sukkar.
- Design of Multi-Level Plant for M/s Nimir Industrial Chemicals, Bahki, Sheikhpura
- Review the Structural Health of existing buildings at different facilities of Style Textile including Building A to F of Style-1, Main Building Style QIE-3, Hall A, B, FGS/Female Canteen, Male Canteen, Dormitory/ Ind Store at Style-3 Defense Road, Hall A, B, Carton Store, Garment B Pair, Associates Store at Style-Highnoon Multan Road, Building A, B, C & D at Style-Sunder, Main Stitching Unit, Canteen, Washroom at Style-Manga.
- Structural Steel Design of Mezzanine Floor at Aqueous Base Block at Brighto Paint Factory Faisalabad.
- Structural Steel Design of Washing area at Atlas Power Lahore-Sheikhpura, Road.



-
- Construction of Foundry Shed At Ravi-li, Sheikhpura Raod, Lahore.
Covered Area: 58,000 sq ft.
 - Evaluation/Vetting the Structural Design of Main Production, Warehouse, Paint Shop for United Auto Industries at Bhai Pheru, Lahore.
Covered Area: 110,000 sq ft.
 - Structural Design of Steel Truss Roof System for Kisan Engineering, Multan Road, Lahore.
Covered Area: 29,000 sq ft.
 - Structural Design of Ware House near Faiz Pur Interchange for Butt and Company (Pvt.) Limited, Lahore.
Covered Area: 59,000 sq ft.
 - Proposed Tannery Unit for Wet Blue Leather at Dubburji Malian for Sheikh of Sialkot, Daska Road, Sialkot.
Covered Area: 29,000 sq ft.
 - Proposed factory building for AS. Group of steel industries at Murade Kalan, Sharaqpur Road, Sheikhpura.
Covered Area: 189,000 sq ft

Equipment Foundations

- Structural Design of Equipment Foundation System of 4 Ton Drop Hammer at Infinity Engineering (Pvt.) Limited, Lahore.
- Structural Design of Equipment Foundation System for Power Presses of 450 Ton & 750 Ton and Hydraulic Press of 550 Ton at Mateline (Pvt.) Limited, Lahore
- Structural Design of Equipment Foundation System for CMM Machine at Infinity Engineering (Pvt.) Limited, Lahore.
- Structural Design of Equipment Foundation System of 150 Ton & 80 Ton Press Machines at Infinity Engineering (Pvt.) Limited, Lahore.
- Structural Design of Equipment Foundation System for Xylene Tank (diameter 21m and Height 22mm) at ABE Engineering (Pvt.) Limited, Lahore.



Offices & Commercial

- Multi-Storied (11 Storied) Building “Litigants Facilitation Center” adjacent Islamabad High Court, Islamabad.
Covered Area: 1,219,688 sq ft.
- Structural Design of Multi-Storied (Thirteen Stories) Office “2nd Tower of LSE” at Lahore Stock Exchange, Lahore.
Covered Area: 108,000 sq ft.
- Design & Issuing the construction drawings of Multi-Storied for Punjab Irrigation (Academy Block, Male Hostels, Female Hostels, Guest House) at Ramkot, Canal Road, Lahore.
Covered Area: 99,187 sq ft.
- Structural Design of Eight Storied Structural Steel Commercial Building “Frayer Plaza - Phase-I for D5 Arcitecture, at Oklahoma, USA.
Covered Area: 73,000 sq m
- Design for rehabilitation and retrofitting the existing 60 years old residential unit for Abul A'la Al-Maududi (founder of Jamait-Islami Pakistan) for converting it to museum with auditorium at Ichra, Lahore.
Covered Area: 29,112 sq ft
- Multi-storied office building for Al-Khidmat Foundation Pakistan, Lahore.
Covered Area: 35,192 sq ft
- Structural Design & Issuing the construction drawings of Multi-Storied (Fifteen Storied Building) for Lahore Chughtai Lab at Jail Road Lahore.
Covered Area: 95,000 sq ft.
- Design of Mutli-storied School Building for Punjab School System at Khayab-e-Jinnah, Wapda Town campuses.
Covered Area: 155,156 sq ft.
- Structural Design & Issuing the construction drawings of Smart Bank Series for “The Punjab Bank at different cities of Pakistan.
Average covered Area: 25,575 sq ft.



-
- Structural Design and Resident Supervision for construction of Air Avenue, Luxury Apartments” at DHA Phase VIII, Lahore Cantt. (Seven Storied Building)
Covered Area: 250,000 sq ft.
 - Structural Design of Multi-Storied (Seven Stories) Commercial Building/Plaza (Shama Apartments) at Shama Stop, Ferozpur, Lahore.
Covered Area: 59,000 sq ft.
 - Structural Design of Multi-Storied (Six Stories) Commercial Building/Plaza (Moon Heights)at F/2 M.A Johar Town, Lahore.
Covered Area: 49,000 sq ft.
 - Structural Design of Multi-Storied (Eight Stories) Commercial Building at Sui Northern Officers Cooperative Housing Scheme, Lahore.
Covered Area: 67,000 sq ft.
 - Structural Design of Multi-Storied (Six Stories) Commercial Building at PIA Housing Scheme, Lahore. Covered Area: 33,000 sq ft.
 - Structural Design of Multi-Storied (Eight Stories) Commercial Building at Sui Northern Officers Cooperative Housing Scheme, Lahore.
Covered Area: 44,000 sq ft.
 - Structural Design of Multi-Storied (Five Stories) Commercial Building at Bund Road, Lahore. Covered Area: 35,000 sq ft.
 - Structural Design of Multi-Storied (Seven Stories) Commercial Building at Wahdat Road, Lahore. Covered Area: 48,000 sq ft.
 - Structural Design of Multi-Storied (Ten Stories) Commercial Building at Rail Bazar, Faisalabad. Covered Area: 64,000 sq ft.
 - Structural Design of Multi-Storied (Four Stories) Commercial Building at Peoples Colony, Faisalabad. Covered Area: 44,000 sq ft.



- Construction of "Al-Farid Tower" (Seven storied) at Plot # 13 & 14, Street # 10, Usman Block (Ph-1) Jeddah Town, Islamabad.
Covered Area: 48,000 sq ft.
- Structural Design of Multi-Storied (Seven Stories) Commercial/Showroom Building for Mateline Industries at Layyton Road, Lahore.
Covered Area: 27,000 sq ft
- Proposed Commercial Building-1 (Kohistan Heights) for Kohistan Developers at Peshwar Road, Wahcantt.
Covered Area: 36,000 sq ft

Educational

- Structural Design & Issuing the construction drawings of CMH-Medical College and ancillary facilities at Multan.
Covered Area: 93,560 sq ft.
- Structural Design & Issuing the construction drawings of CMH-Medical College, Girls & Boys Hostels, Auditorium and ancillary facilities at Kharian.
Covered Area: 167,590 sq ft.
- Structural Design & Issuing the construction drawings of Central Park Medical College Complex, Girls & Boys Hostels, Auditorium and ancillary facilities at Central Park Housing Society, Ferozepur Road, Lahore
Covered Area: 398,256 sq ft.
- Structural Design & Issuing the construction drawings of Queen Medical College Complex, Girls & Boys Hostels, Auditorium and ancillary facilities at Wadana, Kasur.
Covered Area: 287,263 sq ft.
- Structural Design & Issuing the construction drawings of Multi-Storied (Eight Storied Building) "Sheranwala Heights" at Izmir Town, Canal Bank Lahore.
Covered Area: 1,500,000 sq ft.
- Structural Design & Issuing the construction drawings of Central Park University at Central Park Housing Society, Ferozepur Road, Lahore.
Covered Area: 496,257 sq ft



-
- Structural Design of Three Storied School/ Residential Building for Life Care Centre for Pakistan Rangers at Tajpura Scheme, Lahore. Covered Area: 64,000 sq ft.
 - Structural Design of Nine Storied Al-Hamra Apartment Building for Habib Rafiq (Pvt.) Limited at Raiwind, Lahore. Covered Area: 125,000 sq ft.
 - Multistoried Building (Three Stories) of Guest House & Admin/Academic Block of Human Resource Development and Training Center at Hayatabad, Peshawar for Higher Education Commission, Islamabad. Covered Area: 68,000 sq ft.
 - Construction of School Building (four stories) for Makkah Foundation at Gulshan-E-Lahore, Lahore.
Covered Area: 215,000 sq ft
 - Construction of School Building (four stories) for Makkah Foundation at Johar Town, Lahore,
Covered Area: 167,000 sq ft
 - Construction of “The Punjab School Ssystem” Building (four stories) at sargodha, Lahore,
Covered Area: 67,525 sq ft

Hospitality

- Structural Design of Seven Storied Hotel Building at Jail Road, Lahore.
Covered Area: 20,000 sq ft.
- Structural Design of Four Storied Hotel Building at Jaranwala Road, Faisalabad.
Covered Area: 64,000 sq ft
- Construction of Steel Truss Roof System At Wayzgoose Park & Hotel, Kallar Kahar, District Chakwal.
Covered Area: 28,000 sq ft



Medicare/Hospitals

- Structural Design of Thirteen storied (three basements) building of Cardic Hospital at Trade Center, Johar Town, Lahore.
Covered Area: 148,963 sq ft.
- Structural Design of Three storied building of Alkhidmat Afzal Nawaz Hospital at Nagrianwal, Gujrat.
Covered Area: 23,165 sq ft
- Structural Design of Six storied building of Medicare Trust Diagnostic Center & Maternity Home, at Chah Merian, Lahore.
Covered Area: 47,000 sq ft
- Structural Design of Three Storied Community Center/Hospital Building at Sharikpur, District Sheikhpura.
Covered Area: 64,000 sq ft.
- Structural Design of Two Storied Hospital Building at Bund Road, Lahore.
Covered Area: 52,000 sq ft
- Factory Building for Multipurpose Plant for Pharmagen Pharmaceuticals at 34-Km Ferozepur Road, Lahore.
Covered Area: 44,000 sq ft
- Factory Building for Relizone Pharmaceuticals at Plot # 118 Punjab Industrial Estate, Sundar, Lahore.
Covered Area: 21,000 sq ft
- Factory Building for Gallop Pharmaceuticals at Plot # 404 Punjab Industrial Estate, Sundar, Lahore.
Covered Area: 43,000 sq ft
- Factory Building for Marion Pharmaceuticals at Plot # 36-A Punjab Industrial Estate, Sundar, Lahore.
Covered Area: 72,000 sq ft



- Factory Building for News Pharmaceuticals at Plot # 42 Punjab Industrial Estate, Sundar, Lahore.

Covered Area: 27,000 sq ft

Environmental Engineering

- Structural Design of Dissolved Air Flootation (DAF) for Nishat Chunian DAF unit (Phase 1) 150m/hr at Nishat Chunian, Kasur.
- Structural Design of 200,000 Gallons Under Ground Water Tanks (Seven in number) at TMA Hasilpur, Dist. Bahawalpur.
- Structural Design of 100,000 Gallons Under Ground Water Tanks (Six in number) at TMA Hasilpur, Dist. Bahawalpur.
- Proposed Secondary W.W.T.P (40 CuM/hr) for Coca Cola Beverages Pakistan Ltd. Faisalabad.

Project Management & Value Engineering

- Providing the services for Full time supervision, in order to monitor quality of work, at the construction of Unit # 3 at Infinity Engineering (Pvt.) Limited, Lahore. Approximately Construction Period: 1.5 Years
- Evaluation of Contractor's final bill for Construction of Main Production Halls at Mateline (Pvt.) Limited, Lahore. Evaluated Cost : 42 Million
- Evaluation of Contractor's final bill for Construction of Halls Main Production, Warehouse, Paint Shop for United Auto Industries at Bhai Pheru, Lahore. Evaluated Cost: 45 Million.

Residential

- Structural Design of Dissolved Air Flootation (DAF) for Nishat Chunian DAF unit (Phase 1) 150m/hr at Nishat Chunian, Kasur.
- Structural Design of 200,000 Gallons Under Ground Water Tanks (Seven in number) at TMA Hasilpur, Dist. Bahawalpur.
- Structural Design of 100,000 Gallons Under Ground Water Tanks (Six in number) at TMA Hasilpur, Dist. Bahawalpur.



-
- Residential Unit for Mr.Pervaiz Yousaf at Plot 308-Y, Phase -III, D.H.A. Lahore. (1 Kanal House)

 - Residential Unit for Mr Imran Bajwa at Bangla 205, St-10, Defence Raya, Dha Lahore. (1 Kanal House)
 - Residential Unit for Mr Tahir Mahomood at 51 Jasmine Bahria Lahore. (1 Kanal House)
 - Residential Unit for Mr. Etisham Siddique at Dha, Lahore. (1 Kanal House)
 - Residential Unit for Mr. Saif Anjum at Phase Vii, Dha, Lahore. (1 Kanal House)
 - Residential Unit for Mrs. Naila Qamar at Lahore. (1 Kanal House)
 - Residential Unit for Mr. Muhammad Zia Ul Mustafa Jamil at Plot No 0106 Block Aa Lahore. (1 Kanal House)
 - Residential Unit for Mr. Sajjad At Plot Paragon City, Lahore. (1 Kanal House)
 - Residential Unit for Mr Hussnain Ali Shah 226-B Central Park Lahore. (1 Kanal House)
 - Residential Unit for Mr.Syed Tanveer Hussain Naqvi 0345-A Central Park Lahore. (1 Kanal House)
 - Residential Unit for Mrs AISHA ISHAQ 1052-G Central Park Lahore. (1 Kanal House)
 - Residential Unit for Mrs Shazia Parveen 0415-B Central Park Lahore. (1 Kanal House)
 - Residential Unit for Mrs.Sumera Abid 055-C Central Park Lahore. (1 Kanal House)
 - Residential Unit for Mrs. Sobia Mansoor Akbar 0107-C Central Park Lahore. (1 Kanal House)
 - Residential Unit for Mr.Ashaq Ali Bhatti-0419,A Central Park Lahore. (1 Kanal House)
 - Residential Unit for Mrs. Fazeela Sarfraz At Plot # 0047, Blockc Central Park Lahore. (1 Kanal House)
 - Proposed Secondary W.W.T.P (40 CuM/hr) for Coca Cola Bevarages Pakistan Ltd. Faisalabad



DETAILED PROJECT LIST

Refer to Annex-B for Detailed Project List of Projects/Assignments Performed in the Past 05 Years.



Annex-A
CV's OF KEY STAFF

CURRICULUM VITAE

Name : **MUHAMMAD MUDASSAR MUSHTAQ**
Father's Name : Mushtaq Ahmad
Address : 34-D, 6th Avenue, NFC-ECHS, Phase-1, Lahore
Phone No : +92-42-35457772-3
Cell No. : +92-300-8400287
Date & Place of Birth : June 12, 1976, Faisalabad (Punjab), Pakistan
Religion : Islam
Domicile : Faisalabad, Punjab, Pakistan
Nationality : Pakistani
PEC Registration Number : CIVIL/20399
Marital Status : Married
Profession : Civil Engineer
Present Employer : M/s Hike Engineering Consultants
Present Position in Firm : CEO/Design Team Leader
Specialization in Firm : Design Engineer
Year of Joining Firm : January 2020

PERSONAL OUTLINES

Registered professional engineer since 2000 having more than 23 years of professional experience in the field of civil engineering with specialization in structural analysis/design. This field includes the rehabilitation and upgrading works of barrages, canals and distribution system, design of public buildings, hospitals, housing schemes, mosques, universities, overhead water tanks, structures for water supply schemes, highway bridges, schools, microwave towers, under passes, industrial structures.

Possess skill for detailing and supervision of structural plans for a variety of reinforced concrete and steel structures. Also possess the skill for preparation of Bills of Quantities, Engineer's Cost Estimates and Bar Bending Schedules. Have also worked on building and highway construction sites, for site supervision.

Familiar with international codes of practice and design standards such as those of the American Concrete Institute (ACI), American Institute of Steel Construction (AISC), Uniform Building Code (UBC), International Council of Building Officials (ICBO) and the British Standards

Institution (BSI). Possesses skill for use of computer-based techniques for structural analysis and design. Familiar with use of specialized application software like STAAD-Pro, SAP, ETABS, SAFE, AutoCAD, Excel and Word are the computer software that I use for analysis/design of these structures Possesses basic knowledge of drafting tool.

EDUCATION

| Qualification | University / Institution | Specialization | Year |
|----------------------|--|------------------------------------|-------------|
| MSc Engineering | University of Engineering & Technology, Lahore. | Civil Engineering (Structures) | 2004 |
| BSc Engineering | University of Engineering & Technology, Taxila. | Civil Engineering (with Honors) | 2000 |

EXPERIENCE

| | | |
|--------------------------|---|---|
| Name of Employing Agency | : | M/s Hike Engineering Consultants |
| Title of Position | : | CEO/Design Team Leader |
| Location of Assignment | : | Lahore, Pakistan |
| Period of Assignment | : | January 2020 to to-date |

I performed the following activities at different projects, key projects are explained as follows:

- ▶ Business development hunting the new opportunities for business promotion.
- ▶ Site visits, client meeting, resolving the site problems.
- ▶ Detailed seismic and dynamic analysis.
- ▶ Developed tender documents with BoQ and engineer's estimate and supplying rate analysis if required.
- ▶ Providing detailed CAD supervision for developing tender and construction drawings.
- ▶ Acting as an arbitrator in technical & financial disputes at construction sites.

Key Projects

- Multi-Storied (11 Storied) Building “Litigants Facilitation Center” adjacent Islamabad High Court, Islamabad.
Covered Area: 1,219,688 sq ft.
- Multi-Storied for Punjab Irrigation (Academy Block, Male Hostels, Female Hostels) at Ramkot, Canal Road, Lahore.
Covered Area: 99,187 sq ft.
- Multi-Storied (13 Storied) Building “Takbeer Tower” at McLeod Rd Lahore.
Covered Area: 182,500 sq ft
- AR Bridge at Hudiana Darin Lahore for C & W department, Government of the Punjab.
- Design of 12,000 TCD New Sugar Plant at Sabure, Federal Democratic Republic of Ethiopia.
- Design of 12,000 TCD New Sugar Plant at Beles-1 & 2, Federal Democratic Republic of Ethiopia.
- VR Bridge at Khadir Branch, Pakpattan, for Irrigation Department, Government of the Punjab.
- Design of Multi-Level Multipurpose & 7AVCA Plants for M/s Pharmagen Limited at Ferozepur Road, Lahore.
- Evaluation/Vetting the Structural Design of existing buildings including Main Production Area, Denim Sampling, Finished Goods Store, Boiler Shed, Steel Stairs, Hostel Buildings, ETP, Admin Block, Canteen Area, Warehouse, Engineering Block etc. at Interloop HD-3, Manga Riawind Road, Lahore.
- Evaluation/Vetting the Structural Design of existing buildings including PEBs, Main Production Area, Finished Goods Stores, Shell Structures, Boiler Houses, Industrial Steel Stairs, Hostel Blocks, Admin Block, Canteen Area, Warehouse, etc. at Style-1, Style-Highnoon, Style-Defense road, Lahore.
- Review the Structural Health of existing buildings at different facilities of Style Textile including Building A to F of Style-1, Main Building Style QIE-3, Hall A, B, FGS/Female Canteen, Male Canteen, Dormitory/ Ind Store at Style-3 Defense Road, Hall A, B, Carton Store, Garment B Pair, Associates Store at Style-Highnoon Multan Road, Building A, B, C & D at Style-Sunder, Main Stitching Unit, Canteen, Washroom at Style-Manga.
- Design of Multi-Level Pant for M/s Nimir Industrial Chemicals, Bahki, Sheikhpura.

- Design of New Production and Washing Facility at Style Textile, Multan Road, Lahore.
- Design of New Pet Line for M/s Sukkur Beverages (Pvt.) Limited, Sukkar.
- Structural Design of Grid Station and Power House at Interloop HD-5, Khurrianwala, Faisalabad.
- Design of New Denim and Washing Facility at Style Textile, Multan Road, Lahore.
- Design& Issuing the construction drawings of Multi-Storied (Fifteen Storied Building) for Lahore Chughtai Lab at Jail Road Lahore.
Covered Area: 95,000 sq ft.
- Design& Issuing the construction drawings of Multi-Storied (Eight Storied Building) “Sheranwala Heights” at Izmir Town, Canal Bank Lahore.
Covered Area: 1,150,000 sq ft.
- Design of Effluent Treatment Plant (ETP) for Diamond Paint Lahore, Pharmagen Lahore, Pepsi Sukkar, Hafiz Tennery Kasur.
- Structural Review, report and providing rehabilitation/retrofitting measures of Multistoried (three storied) hospital building at Brohey Road, Quetta.
- Design& Issuing the construction drawings of Multi-Storied (Eight Storied Building, 4 blocks) “Air Avenue Luxury Apartments” at DHA-Phase-VIII,
Covered Area: 3500,000 sq ft.
- Design& Issuing the construction drawings of Multi-Storied (Six Storied Building) “SKS Mall” at NESPAK Society, Lahore,
Covered Area: 190,000 sq ft.
- Design of Equipment Foundation System of 4 Ton Drop Hammer at Infinity Engineering (Pvt.) Limited, Lahore.
- Design of Equipment Foundation System of 150 Ton & 80 Ton Press Machines at Infinity Engineering (Pvt.) Limited, Lahore.
- Design of Mutli-storied School Building for Punjab School System at Khayab-e-Jinnah, Wapda Town campuses.
- Design of 200,000 Gallons Under Ground Water Tanks (Seven in number) at TMA Hasilpur, Dist. Bahawalpur.
- Design of 100,000 Gallons Under Ground Water Tanks (Six in number) at TMA Hasilpur, Dist. Bahawalpur

Name of Employing Agency : **M/s National Engineering Services Pakistan (Pvt.) Ltd. (NESPAK)**

Title of Position : Principal Engineer/Head Structures

Location of Assignment : Lahore, Pakistan

Period of Assignment : September 2015 to January 2020.

Detailed Design of Jalalpur Irrigation Project.

This project includes the construction of new Canal system which intake from Rasul Barrage, district Mandi Bahau Din to Khusab Distract, it includes all type of structures like AR bridges, DR bridges, VR bridges, Head Regulators, Cross regulator, Canal syphon, superposes, culverts, outlet structures etc are includes in said project.

I was involved in following activities at this project:

- ▶ Coordinated the work of Hydraulic & Designof Structures Cross drainage Structures like Drainage culverts, Depressed Drainage culverts, Super passages, Canal Siphon and Outlets with internal and site staff.
- ▶ Worked on the Designof Bridges & Culverts of Main Canal. Worked on the Structural and Hydraulic design of Structures including Bridges, Head/Cross Regulators, fall, Meter flumes & Outlet Structures etc. of Branch & Distribution system of Jalapur Irrigation Project.
- ▶ Providing detailed CAD supervision for developing the tender/construction drawings.

Detailed Design of Kachi Canal Project

This project includes the construction of new Canal system which intake from Taunsa Barrage, district Dera Ghazi Khan to Dear Marad Jamali, all type of structures like AR bridges, DR bridges, VR bridges, Head Regulators, Cross regulator, Canal syphon, superposes, culverts, outlet structures etc are includes in said project.

I was involved in following activities at this project:

- ▶ Coordinated the work of Hydraulic & Designof Structures Cross drainage

Structures like Drainage culverts, Depressed Drainage culverts, Super passages, Canal Siphon and Outlets with internal and site staff.

- ▶ Worked on the Design of Bridges & Culverts of Main Canal. Worked on the Structural and Hydraulic design of Structures including Bridges, Head/Cross Regulators, fall, Meter flumes & Outlet Structures etc. of Branch & Distribution system of Kachi Canal Project.
- ▶ Providing detailed CAD supervision for developing construction drawings.

Name of Employing Agency : **M/s National Engineering Services Pakistan (Pvt.)
Ltd. (NESPAK)**

Title of Position : Senior Engineer (Structural Design)

Location of Assignment : Lahore, Pakistan

Period of Assignment : October 2013 to September 2015

Metro Bus System Rawalpindi-Islamabad, Bus Depot at Peshawar Morr, Islamabad.

The bus depot is key component of Metro Bus System Rawalpindi-Islamabad, it consists of different structures including traditional masonry structure, frame structure and pre-fabricated structural steel system.

I was involved in following activities at this project:

- ▶ Detailed seismic and dynamic analysis of different units (like Maintenance/Repair & Vehicle painting area including Wheel Repair/Balancing Auto Electric and Paint Shop, Washing area, Fuel station, administration block, Staff cafeteria, Mosque, Staff rest area, lockers rooms and toilets, gate and boundary wall.
- ▶ Developed tender documents with BoQ and engineer's estimate.
- ▶ Providing detailed CAD supervision for developing tender and construction drawings.

Feasibility study of Rehabilitation & Up gradation of Main Line (ML-1) of Pakistan Railways.

Under CPEC, Pakistan Railways prepared the feasibility study for Rehabilitation & Up gradation of Main Line (ML-1) of Pakistan Railways from Karachi to Peshawar, it consists of different structures including traditional masonry structure, frame structure, arch bridges and Structural Steel bridges.

I was involved in following activities at this project:

- ▶ Detailed seismic and dynamic analysis of different bridges (arch bridge, structural steel bridges etc.)
- ▶ Developed reports for each of the structure.
- ▶ Providing detailed CAD supervision for developing the drawings.

Sports Complex, Naroval.

This sports complex is one of the sports complexes developed at different location in Punjab. Established for organizing the international level events it consists of different structures including frame structure and pre-fabricated structural steel system.

I was involved in following activities at this project:

- ▶ Detailed seismic and dynamic analysis of different units (like cricket ground, hockey ground, football ground, gymnasium, swimming pool, clock tower, administration block, players's accommodation, OHWT, UGWT etc.)
- ▶ Developed tender documents with BoQ and engineer's estimate.
- ▶ Providing detailed CAD supervision for developing tender and construction drawings.

University of Engineer & Technology, Lahore, Naroval Campus.

UET Lahore has program to develop its campuses at different locations of Punjab. Naroval campus is one of them, it acquires an area more than 200 acres on main Naroval-Muridkay road It consists of different structures including traditional masonry structure & frame structure.

I was involved in following activities at this project:

- ▶ Seismic and dynamic analysis using STTAD-Pro and SAP 2000 of different units (like electrical department, mechanical department, main gate/ boundary wall, hostel building, signature building, OHWT, UGWT etc.)
- ▶ Developed tender documents with BoQ and engineer's estimate.
- ▶ Providing detailed CAD supervision for developing tender and construction drawings.

Name of Employing Agency : **M/s National Engineering Services Pakistan (Pvt.) Ltd. (NESPAK)**

Title of Position : Senior Engineer/Head Structures

Location of Assignment : Lahore, Pakistan

Period of Assignment : July 2012 to October 2013

Rehabilitation & Up-gradation of Balloki Barrage and Canal Head Regulators and Lower Bari Doab Canal Improvement project (LBDCIP) Project-1 of Punjab Irrigated Agricultural Investment Program.

This project includes the Rehabilitation & Upgrading of Balloki Barrage and improvement of Lower Bari Doab main canal and its distribution system. Government of the Punjab is client for this project.

I was involved in following activities at this project:

- ▶ Reviewed the design of retaining walls, bridge structure and shear/soldier piles for Pylon & road de-tour protection at Balloki Barrage.
- ▶ Preparation of Design Modules for Bridges & Culverts after detailed discussion with inter officer & Client in LBDC improvement Project.
- ▶ Coordinated the work of Hydraulic & Design of Structures including Village Road Bridges, Dist.Road Bridges, Head/Cross Regulators, Falls, Meter flumes with internal and site staff. Supervised the Preparation of Longitudinal Profile and drawings for distribution System of LBDCIP.
- ▶ Worked on the Design of Bridges & Culverts of Main Canal of LBDC Improvement Project. Worked on the Structural and Hydraulic design of Structures including Bridges, Head/Cross

Regulators, Falls, Meter flumes & Outlet Structures etc. of Branch & Distribution system of LBDC Improvement Project.

- ▶ Reviewed the Shop Drawings of Hydraulic structures and Bridges of LBDC Improvement Project and other related construction issues.
- ▶ Providing detailed CAD supervision for developing construction drawings.

Name of Employing Agency : **M/s National Engineering Services Pakistan (Pvt.)
Ltd. (NESPAK)**

Title of Position : Senior Engineer (Structural Design)

Location of Assignment : Lahore, Pakistan

Period of Assignment : March 2010 to July 2012

Punjab Irrigated Agricultural Investment Program (PIAIP).

Main features of this project are the Rehabilitation & Upgrading of Suleimanki, Trimmu & Panjand Barrages with Pakpattan and Thal Canal canal system, Government of the Punjab owns this project.

I performed the following activities at said project:

- ▶ Detailed condition survey and analysis & design of main components like cross regulators, head regulators, VR, DR & AR bridges etc.
- ▶ Providing detailed CAD supervision for developing construction drawings.
- ▶ Review Analysis and redesign of existing components like divide wall, trustles, under-sluice and other bays of Suleimanki, & Panjand barrage.

Name of Employing Agency : **M/s National Engineering Services Pakistan (Pvt.)
Ltd. (NESPAK)**

Title of Position : Senior Engineer

Location of Assignment : Lahore, Pakistan

Period of Assignment : December 2005 to March 2010

Fatima Fertilizer Complex, Rahim Yar Khan.

This is the largest Fertilizer Complex ever constructed in private sector of Pakistan having capacity of 8100 MTPD, the Fatima Fertilizer Company is client of this project.

I was involved in following activities at this project:

- ▶ Detailed seismic and dynamic analysis of different units (like Nitric Acid Plant, Ammonia Plant, NPK Plant, NP Plant, Workshop, Warehouses, Utilities, Bagging, 32MW Power Plant, & Balance of Plant (BoP), Water Treatment Plant and Conveyor units etc.) of complex was carried out using STAAD Pro/SAP analysis and design softwares.
- ▶ Detailed Hydraulic analysis and design of different units (like Nitric Acid Plant, Ammonia Plant, NPK Plant, NP Plant, Workshop, Warehouses, Utilities, Bagging, 32MW Power Plant, & Balance of Plant (BoP), Water Treatment Plant and Conveyor units etc.) of complex.
- ▶ Providing detailed CAD supervision for developing construction drawings.

Federal Hospital for Women & Children Islamabad

7 to 9 stories Hospital Building covering more than 300,000 sq ft. area with international standard of services, the Pak PWD is client for this project.

I was involved in following activities at this project:

- ▶ Carried out analysis and design of above mentioned building/units using rigid diaphragm techniques with the help of International reputed analysis and design softwares like SAP 2000/ STAAD Pro.
- ▶ Carried out analysis and Hydraulic design of above mentioned building/units.
- ▶ Providing detailed CAD supervision for developing tender and construction drawings.
- ▶ Developing Bill of Quantities of structural elements.
- ▶ Design of Tower Foundation, Equipment Pad, Guard room, Boundary Wall/Fence.
- ▶ Design of Retaining Walls.

Cadet Collage, Okara.

Residential and academic complex of Cadet Collage Okara, the Pak PWD is client for this project.

I was involved in following activities at this project:

- ▶ Carried out analysis and design of above mentioned building/units using rigid diaphragm techniques with the help of International reputed analysis and design softwares like SAP 2000/ STAAD Pro.
- ▶ Providing detailed CAD supervision for developing tender and construction drawings.
- ▶ Developing Bill of Quantities of structural elements.
- ▶ Design of Tower Foundation, Equipment Pad, Guard room Pad, Boundary Wall/Fence.
- ▶ Design of Retaining Walls.

Name of Employing Agency : **M/s National Development Consultants (NDC)**
Title of Position : Senior Structure Engineer
Location of Assignment : Lahore, Pakistan
Period of Assignment : September 2004 to November 2005

Rehabilitating Lower Chenab Canal System (Phase-I), Punjab, Pakistan.

Main features of this project includes the Rehabilitation and design of Lower Chenab Canal System in most of the southern areas of Punjab, National Drainage Program, Government of Pakistan is client of this project.

I was involved in following activities at this project:

- ▶ To ensure alignment of sub surface drainage
- ▶ Site supervision of hydraulic structures like bridges, culverts, inlets and gabion work etc.
- ▶ Verification of bills provided by the contractor.
- ▶ Providing detailed CAD supervision for developing tender and construction drawings.
- ▶ Developing Bill of Quantities of structural elements.

Patfeeder Canal system

Main features of this project includes the construction of Patfeeder in Balochistan area of Pakistan, National Drainage Program, Government of Pakistan is client of this project.

I was involved in following activities at this project:

- ▶ To ensure alignment of sub surface drainage
- ▶ Site supervision of hydraulic structures like bridges, culverts, inlets and gabion work etc.
- ▶ Verification of bills provided by the contractor.
- ▶ Providing detailed CAD supervision for developing tender and construction drawings.
- ▶ Developing Bill of Quantities of structural elements.

Name of Employing Agency : **M/s Amir, Rizwan & Wasim (Pvt.) Limited**
Title of Position : Structural Engineer
Location of Assignment : Lahore, Punjab, Pakistan.
Period of Assignment : May 2002 to September 2004

I was involved in following activities at following projects:

- ▶ Structural Analysis and Design.
- ▶ Developed tender documents with BoQ and engineer's estimate.
- ▶ Providing CAD supervision for developing tender and construction drawings.

Key Projects

- Structural Design of Multi-Storied (Six Stories) Commercial Building at PIA Housing Scheme, Lahore. Covered Area: 33,000 sq ft.
- Structural Design of Multi-Storied (Eight Stories) Commercial Building at Sui Northern Officers Cooperative Housing Scheme, Lahore. Covered Area: 44,000 sq ft.
- Structural Design of Multi-Storied (Five Stories) Commercial Building at Bund Road, Lahore. Covered Area: 35,000 sq ft.
- Structural Design of Multi-Storied (Seven Stories) Commercial Building at Wahdat Road, Lahore. Covered Area: 48,000 sq ft.

- Structural Design of Multi-Storied (Ten Stories) Commercial Building at Rail Bazar, Faisalabad. Covered Area: 64,000 sq ft.
- Structural Design of Multi-Storied (Four Stories) Commercial Building at Peoples Colony, Faisalabad. Covered Area: 44,000 sq ft.
- Structural Design of Three Storied School/ Residential Building for Life Care Centre for Pakistan Rangers at Tajpura Scheme, Lahore. Covered Area: 64,000 sq ft.
- Structural Design of Nine Storied Al-Hamra Apartment Building for Habib Rafiq (Pvt.) Limited at Raiwind, Lahore. Covered Area: 125,000 sq ft.
- Structural Design of Seven Storied Hotel Building at Jail Road, Lahore. Covered Area: 20,000 sq ft.
- Structural Design of Six storied building of Medicare Trust Diagnostic Center & Maternity Home, at Chah Merian, Lahore. Covered Area: 47,000 sq ft.
- Structural Design of Three Storied Community Center/Hospital Building at Sharikpur, District Sheikhpura. Covered Area: 64,000 sq ft.

Name of Employing Agency : **M/s Iqbal, Uzair & Associates**
 Title of Position : Structural Engineer
 Location of Assignment : Lahore, Punjab, Pakistan.
 Period of Assignment : July 2002 to April 2020

I was involved in following activities at following projects:

- ▶ Structural Analysis and Design.
- ▶ Providing CAD supervision for developing tender and construction drawings.

Key Projects

- Structural Review, report and providing rehabilitation/retrofitting measures of different existing buildings (more than 14) of PTCL-OSS.
- Proposed Tannery Unit for Wet Blue Leather at Dubburji Malian for Sheikh of Sialkot, Daska Road, Sialkot, Covered Area: 29,000 sq ft.
- Proposed factory building for AS. Group of steel industries at Murade Kalan, Sharaqpur Road, Sheikhpura, Covered Area: 189,000 sq ft.
- Design of Dissolved Air Flootation (DAF) for Nishat Chunian DAF unit (Phase 1) 150m/hr at Nishat Chunian, Kasur.
- Evaluation/Vetting the Design of Main Production, Warehouse, Paint Shop for United Auto Industries at Bhai Pheru, Lahore. Covered Area: 110,000 sq ft.
- Design of Three Storied Building of Human Resource Development and Training Centre at University of Peshawar, Peshawar. Covered Area: 98,000 sq ft. Structural Design of Multi-Storied (Four Stories) Commercial Building at Peoples Colony, Faisalabad. Covered Area: 44,000 sq ft.
- Structural Design of Three Storied School/ Residential Building for Life Care Centre for Pakistan Rangers at Tajpura Scheme, Lahore. Covered Area: 64,000 sq ft.
- Structural Design of Nine Storied Al-Hamra Apartment Building for Habib Rafiq (Pvt.) Limited at Raiwind, Lahore. Covered Area: 125,000 sq ft.
- Structural Design of Seven Storied Hotel Building at Jail Road, Lahore. Covered Area: 20,000 sq ft.
- Structural Design of Six storied building of Medicare Trust Diagnostic Center & Maternity Home, at Chah Merian, Lahore. Covered Area: 47,000 sq ft.

CURRICULUM VITAE

Position : Principal Engineer (Mechanical Design).
Name of Firm : Hike Engineering Consultants
Name of Person : **MUHAMMAD ARIF MIRZA**
Profession : Mechanical Engineer
Date & Place of Birth : 19th May 1973 - Faisalabad
Nationality : Pakistani
Specialization in Firm : Power Plants
Registration Number with
Pakistan Engineering Council : MECH / 14468
Affiliation with
Professional Institutions : Pakistan Engineering Council
Passport : AW0914061 (Visas availed: Schengen, UAE,
Malaysia, Saudi Arabia, Bahrain, Turkey)

EDUCATION:

| Qualification | University / Institution | Specialization | Year |
|----------------------|--|------------------------------|-------------|
| BSc Engineering | University of Eng. & Technology (UET), Taxila, Pakistan | Mechanical Engineering | 1999 |
| MSc Engineering | University of Eng. & Technology (UET), Lahore, Pakistan | Thermal Power Engineering | 2008 |
| M-Phil (TQM) | University of The Punjab, IQTM, Lahore, Pakistan | Total Quality Management | 2010 |
| MBA | Preston University, Islamabad. Pakistan | Marketing | 2012 |
| MBA | Virtual University, Lahore. Pakistan. | Finance | 2015 |

PERSONAL OUTLINES:

22+ years of experience as Plant Manager, Operations Manager, Head of Maintenance, Maintenance Engineer, Assistant Manager, Project Engineer, Shift Engineer in the industrial sector of Pakistan and abroad.

Worked as Engineering professional in the industrial sectors of Pakistan and abroad. The main industry include Thermal power stations, Petro chemicals, Refineries, Oil and gas pipelines, Energy Planning conservation and development, Chemicals, Ceramics, Engineering industry, Cement industry, Textile industry, Fertilizers industry, Chemical plants, Renewable energy sources and Systems etc.

The key areas of services include Feasibility studies, Technical studies, Industrial design, Engineering design, Mechanical design, Process Design, Power Plants Engineering,



Supervision/inspection of equipment installation, Project management (on behalf of owner), Technical assistance and advisory services, Process evaluation & selection, Operations and maintenance, Maintenance planning, Quality control, Professional trainings etc.

IOSH Managing Safely at work V 5.0 Certified.

Authorized as Plant Safety Controller (Safety Rules BEI 2.0/3.0) since 2013 to date

Take part in the plant commissioning and COD activities according to the guidelines of PPA (Power Purchase Agreement), GSA (Gas Supply Agreement), FSA (Fuel Supply Agreement), EPC, O&M contracts of 404 MW Uch Power Plant and 32 MW AEL DESCON Power plant

Worked on the Power plants including Steam turbines (GE 200 MW, Fuji 140 MW,), Boilers (triple pressure) of capacity 220 tons 95 bar 530 C, 25 ton 20 bar 500 C, 10 tons 15 bar 480 C, 5 tons etc. Gas Turbines (GE 130 MW), HFO engines (Wartsila, MAN, Niigata 2 ~ 20 MW capacity), Gas engines, associated BOPs and Auxiliaries.

Worked overseas on the oil and gas facilities in UAE, Malaysia, Saudi Arabia and Bahrain both onshore and offshore installations.

Worked as Project Manager in the Plant modification activities like Air handling and filtration system, Exhaust system, radiator efficiency improvement, 10 ton crane uplifting project at 32 MW AEL DESCON Power Plant

Self-starting, goal-oriented strategist whose confidence, perseverance and vision promote success, Strong safety and work ethics, Team Player, Positive attitude, Ability to deliver solution, Ability to embrace and deliver change when required, Excellent verbal and written communicator

Computer literate, having good command on CMMS (MP2, API Pro, MAXIMO), Eclips-II (PTW system), CAMEL RACE (Performance Monitoring software) , PRIMA Vera 6.0 Project Management, MS Project, MS office & Windows.

Well aware about the Quality & EHS standards ISO 9001:2000, ISO 14000, OHSAS 18001, ADNOC CIS-15/17/19. AIMS, 5S and TPM.

Well aware about the IPPs Contractual matters (PPA, FSA, GSA, O&M agreements and supplier contracts).

Expert in Project Management of PEIR audits, RCM, RBI, FMECA studies in Power and Oil & Gas sector.

Reasonable understanding of Financial matters like costing, BOQ, Annual budgets preparations etc.

Expert in close monitoring of plant performances and KPIs like Gross & Net Generation (MWh), Gross & Net Heat Rate (KJ/KWh), Operational Heat Rate Factor (%), Gross & Net Efficiency (%), Plant Load Factor (Gross Generation Based) (%), Commercial Load Factor (%), Shutdown Period (Hours), Shutdown Ratio (%), Outage Duration (Hours), Outage Ratio (%), Service Factor, Planned Outage Factor, Unplanned Outage Factor, Shutdown Factor, Available Capacity Ratio (%), Availability / Availability Factor (%), Reliability (%), Utilization Factor (%), Starting Reliability (%), Complex Derating Factor (%). (Monitoring plant efficiency / Heat Rate), close monitoring of lube oil performance & execution of plant equipment's maintenance activities.

Appreciation letter in 2015 from UPL in recognition to the Uch-II plant performance enhancement (Saving of 36,000 KWh per day).



Three Appreciation letters in 2010 from DESCON on professional performance in operational, contractual and plant COD activities.

PROFESSIONAL EXPERIENCE HIGHLIGHTS

Industrial

| Job Title | Company | Major Equipment Managed | From | To |
|--|---|--|-------------|-----------|
| Principal Engineer (Mechanical Design) | Hike Engineering Consultants | Consultancy services in Thermal power stations, Petro chemicals, Refineries, Oil and gas pipelines, Energy Planning conservation and development, Chemicals, Ceramics, Engineering industry, Cement industry, Textile industry, Fertilizers industry, Chemical plants, Renewable energy sources and Systems etc. | Sep-21 | To date |
| AM Operations | ENGIE (Former GDF SUEZ Energy International) UPL/Uch-II Power Pvt. Ltd--IPP (1000 MW Combined Cycle Power Plant) | <ul style="list-style-type: none"> • 05 Gas Turbines (GE) 130 MW each • 01 Steam Turbine (GE) 195 MW with 03 HRSGs • 01 Steam Turbine (Fuji) 136 MW with 02 HRSGs | May-17 | Sep-21 |
| GM Projects | UMER Construction Solution, Lahore. | <ul style="list-style-type: none"> • HCP Faisalabad. • Interloop HD-III, Lahore. • Alkhidmat Foundation, Lahore, Lahore. | Mar-15 | May-17 |
| AM Operations | ENGIE (Former GDF SUEZ Energy International) UPL/Uch-II Power Pvt. Ltd--IPP (1000 MW Combined Cycle Power Plant) | <ul style="list-style-type: none"> • 05 Gas Turbines (GE) 130 MW each • 01 Steam Turbine (GE) 195 MW with 03 HRSGs • 01 Steam Turbine (Fuji) 136 MW with 02 HRSGs | May-13 | Mar-15 |
| Head of Maintenance | Applusvelosi, Malaysia (Base Office – UAE) Served in Maint Management, EPC projects, Asset Integrity reviews, RCM/RBI/PEIR/HSE Studies | • As Manager lead projects (Power and Oil&Gas) in UAE, Malaysia, Bahrain and Saudi Arabia with companies like ADCO (UAE), Murphy Oil (Malaysia), Al-Khafji Joint Operations-KJO (Saudi Arabia) etc. | Apr-12 | May-13 |
| Manager Operations | MAN Diesel & Turbo Operations, Germany Project: (Atlas Power, Lahore) -- IPP 225 MW HFO fired Diesel Engine CCGT | <ul style="list-style-type: none"> • 11 Diesel Engines (MAN) 18.428 MW each • 01 Dresser Rand Steam turbine with 11 HRSGs | Nov-10 | Apr-12 |
| Plant Manager | DESCON Engg Services (Project AEL) -- IPP (32 MW Natural Gas fired Engine Power Plant) | • 08 Gas Engines (MWM -Germany) 4.0 MW each | May-08 | Nov-10 |
| Maint Engr/ DM OPS | Kohinoor Energy Limited Pvt. Ltd -- IPP (124 MW HFO fired Diesel Engine CC Plant) | <ul style="list-style-type: none"> • 08 Diesel Engines (Wartsilla-15.68 MW each) • 01 Peterbrotherhood Steam turbine with 8 HRSG | Aug-04 | May-08 |
| Maintenance Engineer | Sitara Energy Limited Pvt. Ltd (90 MW HFO/Gas fired Engines Power Plant) | <ul style="list-style-type: none"> • 08 Diesel Engines (Niigata - Japan) 6.0 MW each • 08 HRSGs (DDFC) | Aug-99 | Aug-04 |

Plants Construction/Commissioning

| Job Title | Company | Major Equipment Managed | From | To |
|------------------------|---|---|-------------|-----------|
| Asstt. Manager | GDF SUEZ Energy Int. , Uch-II Expansion Project -- IPP (404 MW Combined Cycle Power Plant) | • 02 Gas Turbines (GE) 126 MW each • 01 Steam Turbine (Fuji) with 02 HRSGs | May-13 | Apr-14 |
| Deputy Project Manager | DESCON Engineering Services (Project AEL) -- IPP (32 MW Natural Gas fired Engine Power Plant) | • 08 Gas Engines (MWM - Germany) 4.0 MW each | May-08 | July-09 |

PROFESSIONAL EXPERIENCE DETAILS

Consultancy

Worked as consultant in the Engineering sector like

- Power stations including CCGT, Diesel engine power plant, Gas engine power plant
- Petro chemicals
- Refineries
- Oil and gas pipelines
- Chemical industry
- Ceramics industry
- Cement industry
- Textile industry
- Fertilizers industry
- Chemical plants
- Renewable energy Systems like Solar, Wind, Biogas etc.

Plant Operations

Work at positions of Plant Manager, Manager Operations, Shift Charge Engineer

Responsibilities include:

- Guide and Supervise the Shift Team during the Plant Startup Preparation, Plant Startup and subsequent Plant Operation.
- Coordinate with NPCC on operational matters,
 - Confirming plant availability
 - Load dispatch
 - Daily correspondence
 - Abnormal Operations



-
- Plan Outage,
 - Operation Schedule etc.
 - Investigate causes of operation non-conformance & take remedial actions accordingly.
 - Document actions, concessions and instructions of non-conforming output.
 - Coordinate and monitor maintenance activities during the shift.
 - Perform the maintenance turnover routines according to relevant SOPs.
 - Implement operation plans during the shift.
 - Review and distribute client notification to relevant functions.
 - Review resource requirements, e.g., logistics.
 - Review the Resource Deployment Schedule and distributes to relevant functions.
 - Deploy the Operations Team according to the Resource Deployment Schedule.
 - Provide guidance in operational matters, as required.
 - Supervise the Plant operations activities.
 - Review the Plant performance reports, e.g., MPR, WPR, DOR, etc., and forwards them to higher authorities.
 - Initiate and coordinate relevant activities with the following departments.
 - Quality & EHS Department
 - Maintenance Department
 - Logistics Department
 - Understanding of PPA(Power Purchase Agreement)
 - WPPO for LDs issues
 - Recommend the hiring of technical personnel.
 - Conduct and evaluate the Performance Appraisals of Operations Team.
 - Prepare the budget of Operations Department.
 - Coordinate with the following departments for routine activities:
 - Quality and EHS Department
 - Maintenance Department
 - Strong organizational, communication and interpersonal skills to be able to work effectively with both internal and external personnel (Government Agencies e.g. WAPDA, OGDCL, SNGPL), external organization, to ensure that all business objectives are met in a timely and cost effective manner.

Plant Maintenance

Work at positions of Head of Maintenance, Maintenance Engineer, and Assistant. Maintenance Engineer Responsibilities include:



-
- Review of the preventive maintenance plan.
 - Review resource requirements, scheduling and distribution to relevant functions.
 - Supervise the overall Maintenance activities
 - Ensure maintenance activities according to relevant SOPs.
 - Supervise the overall checking and testing activities, confirms/affirms the reports as required.
 - Coordinate corrective/preventive action with Maintenance Staff.
 - Evaluate and approve work request in coordination with Mechanical Team.
 - Responsible for prompt and timely execution of repairs for the major break down so as to reinstate the power supply.
 - Coordinate with Logistics/Store section for in-time spares and materials availability for schedules /PMS.
 - Responsible for Consolidated reports based on all measurements resulting from maintenance jobs.
 - Undertake monthly performance review.
 - Responsible for maintenance by –product waste management.
 - Responsible for the excellent housekeeping of the plant facilities and work areas
 - Responsible to conduct technical training and meetings for maintenance personnel.
 - Assist Maintenance Manager in the implementation of Quality and productivity initiatives in his department.
 - Initiate and coordinate activities with the following departments.
 - Quality & EHS Department
 - Operations Department
 - Logistics Department
 - Electrical Department
 - Technical Department
 - Finance Department
 - Supervise over all calibration activities as per the calibration plan.
 - Supervise the checking & testing activities, confirms/affirms the testing reports, as required.
 - Coordinate corrective/preventive action in coordination with calibration team.
 - Assist Maintenance Manager in the execution of the contractual matters
 - Recommend the hiring of technical personnel.
 - Conduct and evaluate the Performance Appraisals of Mechanical Team.
 - Implement the Company administrative policies.
 - Prepare the budget of Maintenance Department.



- Verify the claims of Maintenance Department.
- Monitor and control budget variance.

Plant Erection, Commissioning, Modifications/ Improvements

- Work as Project Engineer (Mech). Participated in erection and commissioning of Uch-II Expansion Project (404 MW Combined cycle power plant). It includes two Frame 9E GE Gas Turbines and one Fuji Steam turbine with two DKME HRSGs and related plant auxiliaries.
- Work as Dy. Manager Project (Mech). Participated in erection and commissioning of AEL (A 32MW IPP of DESCON). It includes engines, auxiliaries, BOP, radiator, Cooling tower, Cooling water circuits, Lube oil system, Fuel system, Exhaust system, Compressed air system
- Act as Project Manager in the Plant modification activities like Air handling and filtration system, Exhaust system, radiator efficiency improvement, 10 ton crane uplifting project.
- Actively participated in COD activities of both power plants.

IPPs / Contractual

- PPA, FSA, GSA, TPs, OPs, EPP, CPP invoices, Agreements (i.e. OEM, O&M and Services).
- Co-ordination with NPCC, RCC, WPPO, SNGPL, OGDCL, EPA and other regulatory authorities
- Pre and post synchronization tests with national Grid during COD, ADC test, Co-ordination with Independent Engineer and Vender technical advisor (i.e. German Engineers).
- Coordination with NPCC on operational matters, e.g., Plan Outage, Operation Schedule, Confirming plant availability, Load dispatch, Daily correspondence, Abnormal Operations
- Exposure to work as a Owner Engineer
- Contractual performance monitoring like Availability, heat rate, lube oil Cons, LDs etc.
- On behalf of company visit Germany, Dubai & Turkey for warranty claims / trainings

Oil & Gas Sector

Work as Head of Maintenance (RCM Services Power/Oil & Gas)

Employer: APPKUS VELOSI Asset Integrity Ltd, Abu Dhabi (UAE)

Projects:

- PEIR study at ADCO (Abu Dhabi Company for onshore oil Operations) ---- As Integrity Engineer / Project Manager
- RCM study at Al-Khafji Joint Operations (Oil and Gas), Saudi Arabia --- As RCM team leader
- RCM study at Murphy Sarawak Oil Company, Malaysia --- As RCM team leader
- PEIR study at Bahrain Gas, Bahrain --- As integrity Engineer

Quality and EHS

- Quality standards (ISO 9001:2000, ISO 14000, OHSAS 18001, 5S and TPM)
- Total quality management (TQM) activities (i.e. EHS, quality and productivity initiatives, SOPs/WI, Safety procedures, good housekeeping, energy conservation guidelines and environmental regulations).

Teaching Experience



Served as a part time teaching faculty member for about 05 years in the following institutes

- NFC Institute OF Engg & Fertilizers Research, FAISALABAD (UET Affiliated)
- (January, 2002 ~ January, 2004)
- Preston University, FAISALABAD (June, 2002 ~ August, 2004)
- Newport University, LAHORE (June, 2006 ~ December, 2006)
- GTZ (German Agency for technical Co-operation) (August, 2001 ~ March, 2002)

TRAININGS AND CERTIFICATES:

| Date | Duration | Training institute | Training Title | Location |
|-----------|----------|---------------------------------|---|---------------|
| 26-Nov-08 | 1 Day | Shell, Pakistan | Shell Argina Power learning session | Turkey |
| 16-Nov-09 | 2 Days | MWM, Germany | Gas engine troubleshooting & performance improvements | Germany |
| 25-Dec-11 | 3 Days | Nalco Water treatment | Water treatment philosophy in Energy sector | Dubai |
| 9-Jun-14 | 2 Days | Laborelec, Belgium | Gas Turbine Combustion | Dubai |
| 13-May-14 | to date | Uch Power Pvt. Ltd, Pakistan | Safety Controller Certification as <ul style="list-style-type: none"> • SC (Safety Controller) Safety Rules BEI 3.0 • SAP (Senior Authorized Person) Safety Rules BEI 2.0 | UPL, Pakistan |
| 8-Oct-11 | 7 Days | MAN Diesel & Turbo, Germany | API Pro (CMMS) introduction and implementation | APL, Pakistan |
| 23-Aug-14 | 2 Days | Possibilities Consultants | Time and Stress Management | UPL, Pakistan |
| 20-May-14 | 12 Days | GE Energy Technical Training | Gas Turbine Generator Operations | UPL, Pakistan |
| 1-Jul-13 | 7 Days | Fuji Electric Energy Technology | Steam Turbine Generator and Auxiliaries | UPL, Pakistan |
| 8-Jul-13 | 8 Days | DKME, Japan | Heat Recovery Steam Generator (HRSG) overall training | UPL, Pakistan |
| 3-Jun-13 | 5 Days | GE Energy Technical Training | Gas Turbine 'MarkVIe' Controls | UPL, Pakistan |
| 17-Jun-13 | 5 Days | GE Energy Technical Training | Generator Controls (Ex2100e) | UPL, Pakistan |
| 10-Jul-13 | 5 Days | GE Energy Technical Training | Gas Turbine Systems Maintenance | UPL, Pakistan |



| | | | | |
|-----------|---------|-------------------------------------|--|------------------|
| 17-Jul-13 | 3 Days | Honeywell, Korea | DCS Operation & Maintenance Training | UPL, Pakistan |
| 29-Jun-13 | 3 Days | ABB, Germany | Site Training for UCH2 220 KV Switchyard | UPL, Pakistan |
| 3-Aug-13 | 1 Day | AJOU Engineering Co. Ltd, Korea | Chemical Dosing System | UPL, Pakistan |
| 31-May-13 | 1 Day | ALFA Standard SPA, Korea | Operator check on IPB Ducts and Pressurization System | UPL, Pakistan |
| 29-Aug-13 | 1 Day | Bopp & Reuther, Korea | Course for Hydraulic Operated HP + IP Bypass System | UPL, Pakistan |
| 27-Jul-13 | 1 Day | SWAN Analytical, Korea | On-line Analysis in Water-Steam-Cycle | UPL, Pakistan |
| 19-Aug-13 | 2 Days | Hyosung Goodsprings INC., Korea | Boiler feed water pumps and Condensate Extraction pump | UPL, Pakistan |
| 23-Jul-13 | 2 Days | ABB, Switzerland | GCB (HECS 80M) customer training | UPL, Pakistan |
| 15-Jan-09 | 3 Days | Franklin Covey, South Asia | The Seven Habits of Highly Effective People | DESCON, Pakistan |
| 25-Jul-07 | 2 Days | PIQC Institute of Quality, Pakistan | Course on "Training of Trainers" | KEL, Pakistan |
| 5-Aug-08 | 1 Day | The Konsultants, Pakistan | Effective time Management | KEL, Pakistan |
| 12-Mar-07 | 2 Days | PIQC Institute of Quality, Pakistan | TPM & 5S activities | KEL, Pakistan |
| 23-Feb-06 | 1 Day | FASTC, Pakistan | Incident control system (ICS) | Pakistan |
| 11-Oct-11 | 15 Days | Institute of Business Techniques | PRIMA Vera 6.0 Project Management | Lahore, Pakistan |

CURRICULUM VITAE

Name : **LIAQAT ALI MIRZA**
Father's Name : Mirza Lall Din
Address : 144 Awasia Society, Township, Lahore.
Phone No : +92-42-35457772
Cell No. : +92-307-4163624
Date & Place of Birth : June 06, 1951, Faisalabad (Punjab), Pakistan
Religion : Islam
Domicile : Faisalabad, Punjab, Pakistan
Nationality : Pakistani
PEC Registration Number : ELECT/11620
Marital Status : Married
Profession : Electrical Engineer
Present Employer : M/s Hike Engineering Consultants
Present Position in Firm : Principal Engineer (Electrical Design)
Specialization in Firm : Design Engineer
Year of Joining Firm : July, 2023

PERSONAL OUTLINES

Electrical Engineer from UET Lahore with 47 years of experience in design, erection, commissioning and supervision of Substations. Having experience in LV, MV, HV, EHV system and is self assured that my skills and my previous experience are a perfect match for the areas of engineering/automation and energy assignments. I have working strength in electrical engineering with focus in:

- Engineering Design activities, Operational Electrical, Electronics, Automation/Controls.
- Earthling systems performance testing.
- Substation lighting system design and installation testing.

I have worked in Lahmeyer International, Abu Dhabi, ZALCO Industries, Pakistan, Saudi Consolidated Electric Co., Saudi Arabia and in WAPDA.

EDUCATION

| Qualification | University / Institution | Specialization | Year |
|----------------------|--|------------------------|-------------|
| BSc Engineering | University of Engineering & Technology, Lahore. | Electrical Engineering | 1975 |

EXPERIENCE

| | | |
|--------------------------|---|--|
| Name of Employing Agency | : | M/s Hike Engineering Consultants. |
| Title of Position | : | Principal Engineer (Electrical Design) |
| Location of Assignment | : | Lahore, Pakistan |
| Period of Assignment | : | July 2023 to-date |

I performed the following activities at different projects, key projects are explained as follows:

- ▶ Supervision of erection and commissioning works at substations.
- ▶ Processing of approval of engineering documents of substations.
- ▶ Detailed Power & Electrical Design.
- ▶ Developed tender documents with BoQ and engineer's estimate and supplying rate analysis if required.
- ▶ To attend and to co-ordinate during system faults at different substations.
- ▶ Currently working on Multi-Storied (11 Storied) Building "Litigants Facilitation Center" adjacent Islamabad High Court, Islamabad, this project has covered area more than 1,219,688 SFT.

| | | |
|--------------------------|---|---|
| Name of Employing Agency | : | M/s LAHMEYER INTERNATIONAL GMBH, Consulting Engineers, Abu Dhabi - U.A.E |
| Title of Position | : | Resident Engineer (Electrical) |
| Location of Assignment | : | Abu Dhabi - U.A.E |
| Period of Assignment | : | December 1996 to November 2018 |

I performed the following activities at different projects, key projects are explained as follows:

- ▶ Supervision of erection and commissioning works at substations.
- ▶ Processing of approval of engineering documents of substations.
- ▶ Detailed Power & Electrical Design.
- ▶ Developed tender documents with BoQ and engineer's estimate and supplying rate analysis if required.
- ▶ To attend and to co-ordinate during system faults at different substations.

Key Projects

Contract No. WED/PD/SS-804

Bulk Power Transfer to the Island of Abu Dhabi - (Stage III)

Installation and Commissioning of 132 kV/11 kV Substations E11 & W59 and New Equipment at Existing E15 and New Airport Substations

Contract No. WED/PJ/S-INST/897/97

Interconnection of Abu Dhabi Area and Western Area Power Networks

Extension of 220 kV Gridstation at Shahama East

Contract No. WED/PD/AD/S-INST/SS-248/98

400 kV Interconnection between Abu Dhabi and Taweelah Power Plants

Lot 2A - 400/132 kV Gridstation at ADPS

VO2 - Additional 140 MVA, 220/33 kV Power Transformer and related
Extension Works at 220 kV Grid Station Shahama East

VO3 - Additional 33 kV Cable / OHL Feeder and related
Extension Works at 220 kV Grid Station Shahama East

Contract No. WED/PD/AD/S-INST/SS-250/98

400 kV Interconnection between Abu Dhabi and Taweelah Power Plants

Lot 2B3 - Modification & Extension of 132/11 kV Substation at E9

Contract Nos. N-99-0171, N-00-0301 and N-01-0181

Extension of Gridstations

lot 2B1 - Extension of 400/132 kV Gridstation at ADPS

lot 2B3 - Extension of 220/132 kV Gridstation at E48

lot 2B2 - Extension of 400/220 kV Gridstation at Al Dahma

Lot 1 - 220 kV OHL Bays at Al Dahma

Contract No. N-99-0212

Reinforcement of 220 kV Grid in Abu Dhabi Area

Lot 1 - 220/33/11 kV Substation Samha

Contract Nos. N-00-0327 and N-01-0059

400/220 kV Interconnection Al Ain South West

Lot 1 - 400/220/33 kV Grid station at Al Ain South West

Lot 3 - SVC at Al Ain South West

Contract No. N2256H

Interconnection of ADCO/TRANSCO Power Networks

Lot 1A2 - New 220kV Gridstation at Bab

Lot 1A3 - New 220kV Gridstation at Bu Hasa

Contract No. N-5797

POWER NETWORK DEVELOPMENT WORKS FOR YAS ISLAND

Lot 1 - 132/22 kV Substation at Yas Island

Contract No. N-5796

POWER NETWORK DEVELOPMENT WORKS FOR YAS ISLAND

Lot 5 - 132/11 kV Mobile Stations

Contract No. N-4218.1

New 400kV Gridstation and 132/22 kV Primary Substation at Al Reem Island and Associated 400 kV Cable Works

Lot 1 – Substation Works

Contract No. N-4914

Three (3) New 132/22 kV Substations at Reem Island and Associated

132 kV Cable Connections

Lot 1A - Three (3) New 132/22 kV Substations at Reem Island

Contract No. N-7204.1E

Lot 1E - Supply and Installation of 132/22kV Substation for Al Falah Development

Contract Nos. N-5398A (Lot1B) & N-5398B (Lot1B)

400 kV ADST Extension by 1 New Cable Feeder

and Conversion of 4 Nos. of Existing OHL Feeders

in Cable Feeders

Contract: N-7204.1D

Supply and Installation of 132/11 kV Substation in Presidential Palace – Lot 1D

Contract: N-7204.1A

Supply and Installation of 132/11kV Substation in Mussafah (M-12) - Lot 1A

Contract: N-7204.1C

Supply and Installation of 132/11kV Substation at E25/02 Sector - Lot 1C

Contract: N-7204.1B

Supply and Installation of 132/11kV Substation at Z16 (Lot 1B)

Name of Employing Agency : **M/s ZALCO Industries, Pakistan**

Title of Position : General Manager

Location of Assignment : Faisalabad, Pakistan

Period of Assignment : March 1989 to October 1996

I performed the following activities at different projects, key projects are explained as follows:

- ▶ Co-ordination among sale/purchase section, production section and administration section of the company.
- ▶ Business meetings with the clients covering all the technical discussions/specifications and contract matters.

Name of Employing Agency : **M/s Saudi Consolidated Electric Co., (SCECO**

Title of Position : Protection/Commissioning Engineer

Location of Assignment : Riyadh, Kingdom of Saudi Arabia

Period of Assignment : April 1981 to November 1989

Responsibilities

- Commissioning and Testing of 13.8 kV, 33 kV, 132 kV and 380 kV Substations. In this regard worked with multi-national organization like M&G, BBC, ASEA, TOSHIBA and MITSUBISHI.

- Routine Protection maintenance including relay testing/calibrations for high voltage lines, power transformers and Bus-Sections. Also doing maintenance jobs for control circuits on the Relay and control panels. It includes fault locations, repair, modification and re-commissioning of the system.
- Relay maintenance job for the faulty relays in departmental testing lab.
- Commissioning of all protection alarms/indications with ECC (SCADA System)
- Relay settings application on different relays in the substations.
- Writing purchase requisition with complete technical specifications on SCECO/ International Standards. Analysing the quotation and issuing instructions to material/purchase department for placing the order.
- Training the Engineer/Staff for the Protection testing/operations on 13.8 kV, 33 kV and 132 kV Transmission and distribution system.
- Senior Authorised Engineer for switching/operations issuing and cancelling safety documents upto and including 132 kV system.
- Commissioning and Testing of 13.8 kV, 33 kV, 132 kV and 380 kV Substations. In this regard worked with multi-national organization like M&G, BBC, ASEA, TOSHIBA and MITSUBISHI.

Name of Employing Agency : **M/s Water & Power Development Authority,
Pakistan (WAPDA).**

Title of Position : Protection Design Engineer

Location of Assignment : Wapda House, Pakistan

Period of Assignment : April 1975 to September 1981

Responsibilities

- Relay setting calculations for 66 kV, 132 kV, 220 kV and 500 kV lines/substations.
- Preparation of AC schematic and DC schematic (control circuits) diagrams for 132 kV, 220 kV substations.
- Preparation of fault analysis reports for different faults in the high voltage networks.

- Preparation of detailed reports for the improvements of existing protection systems in WAPDA Networks.
-

Languages:

| | Speaking | Reading | Writing |
|---------|---------------|-----------|-----------|
| Urdu | Mother tongue | | |
| English | Excellent | Excellent | Excellent |
| Hindi | Excellent | Excellent | Excellent |
| Arabic | Good | Good | Good |



Annex-B

. DETAILED PROJECT LIST OF LAST 05 YEARS

General Experience by Providing the List of Projects/Assignments Performed in the Past 06 Years

| Sr. No. | Name of Project | Location | Client | Project Description | Implementation | | Total Cost of Project (Rs million) | Cost of Consultancy Services provided by the Firm | Actual Services Provided by the Consultant |
|---------|--|------------------|----------------------------------|---|----------------|------------|------------------------------------|---|--|
| | | | | | Start | Completion | | | |
| 1 | CONSTRUCTION OF SCHOOL BUILDING | GULSHAN-E-LAHORE | MAKKAH FOUNDATION, LAHORE. | SWIMMING POOL Supporting Staff Hostel Junior Block Auditorium Punjab School Squash Courts Admin Block | JANUARY 16 | FEB 2016 | 100 | 1.50 | <ul style="list-style-type: none"> • Data Collection • Design Review and Condition Survey • Survey and Investigations • Structures Design • Public health design • Electrical and Electification Design • Detailed Design and Drawings • Bidding Documents • Cost Estimates, Specifications |
| 2 | SIR ENGINEERING FACTORY FOR KOTLAKHPAT LHR | KOTLAKHPAT LHR | CONSTRUCTION OF FACTORY BUILDING | Multi story and Industrial building | MARCH, 2016 | July, 2016 | 60 | 0.69 | <ul style="list-style-type: none"> • Data Collection • Design Review and Condition Survey • Survey and Investigations • Structures Design • Public health design • Electrical and Electification Design • Detailed Design and Drawings • Bidding Documents • Cost Estimates, Specifications |
| 3 | HEAD OFFICE BUILDING FOR AL-KHIDMAT LAHORE | Lahore | Al-Khidmat | Multi story and Industrial building | APRIL 2016 | Jun-16 | 75 | 0.86 | <ul style="list-style-type: none"> • Data Collection • Design Review and Condition Survey • Survey and Investigations • Structures Design • Public health design • Electrical and Electification Design • Detailed Design and Drawings • Bidding Documents • Cost Estimates, Specifications |

General Experience by Providing the List of Projects/Assignments Performed in the Past 06 Years

| Sr. No. | Name of Project | Location | Client | Project Description | Implementation | | Total Cost of Project (Rs million) | Cost of Consultancy Services provided by the Firm | Actual Services Provided by the Consultant |
|---------|--|----------------------------|------------------------------|--|----------------|------------|------------------------------------|---|---|
| | | | | | Start | Completion | | | |
| 4 | Commercial Building of Ms Sheikh Carpets | 16-K.M Multan Road, Lahore | MS Sheikh Carpets | MS Sheikh Carpets site Block-A,B & C, Office | Jul-16 | Aug-16 | 40 | 0.46 | <ul style="list-style-type: none"> • Data Collection • Design Review and Condition Survey • Survey and Investigations • Structures Design • Public health design • Electrical and Electrification Design • Detailed Design and Drawings • Bidding Documents • Cost Estimates, Specifications |
| 5 | PROPOSED BUILDING FOR MR. IMRAN & MR. SALAH-UD-DIN JOHAR TOWN LAHORE | Johar Town, Lahore. | Mr. Imran & Mr. Salah-ud-Din | Multi story House | Sep-16 | Oct-16 | 25 | 0.29 | <ul style="list-style-type: none"> • Data Collection • Design Review and Condition Survey • Survey and Investigations • Structures Design • Public health design • Electrical and Electrification Design • Detailed Design and Drawings • Bidding Documents • Cost Estimates, Specifications |
| 6 | SHERANWALA APARTMENT | Canal Bank Road, Lahore. | Sheranwala | Multi story and Industrial building | | | 150 | 1.13 | <ul style="list-style-type: none"> • Data Collection • Design Review and Condition Survey • Survey and Investigations • Structures Design • Public health design • Electrical and Electrification Design • Detailed Design and Drawings • Bidding Documents • Cost Estimates, Specifications |
| 7 | STYLE TEXTILE | Kot Lakh Path, Lahore. | STYLE TEXTILE Pvt Ltd | Multi story and Industrial building | | | 0.5 | 0.01 | <ul style="list-style-type: none"> • Data Collection • Design Review and Condition Survey • Survey and Investigations • Structures Design • Public health design • Electrical and Electrification Design • Detailed Design and Drawings • Bidding Documents • Cost Estimates, Specifications |

General Experience by Providing the List of Projects/Assignments Performed in the Past 06 Years

| Sr. No. | Name of Project | Location | Client | Project Description | Implementation | | Total Cost of Project (Rs million) | Cost of Consultancy Services provided by the Firm | Actual Services Provided by the Consultant |
|---------|--|------------------------|----------------------------------|-------------------------------------|----------------|------------|------------------------------------|---|--|
| | | | | | Start | Completion | | | |
| 8 | CENTRAL PARK MEDICAL COLLAGE | Ferezipur Road, Lahore | Mian Tahir Javed (C.E.O) | Multi story and Industrial building | | | 200 | 2.30 | <ul style="list-style-type: none"> • Data Collection • Design Review and Condition Survey • Survey and Investigations • Structures Design • Public health design • Electrical and Electification Design • Detailed Design and Drawings • Bidding Documents • Cost Estimates, Specifications |
| 9 | PUNJAB SPORTS DEPARTMENT NISTER PARK LAHORE | Lahore | Punjab Sports Department | Multi story and Industrial building | | | 100 | 1.15 | <ul style="list-style-type: none"> • Data Collection • Design Review and Condition Survey • Survey and Investigations • Structures Design • Public health design • Electrical and Electification Design • Detailed Design and Drawings • Bidding Documents • Cost Estimates, Specifications |
| 10 | SPORT STAR STUDIO DWGS AT QIE, KOT LAKH PATH | Kot Lakh Path, Lahore. | Sports Star Internationl Pvt Ltd | Multi story and Industrial building | | | 50 | 0.58 | <ul style="list-style-type: none"> • Data Collection • Design Review and Condition Survey • Survey and Investigations • Structures Design • Public health design • Electrical and Electification Design • Detailed Design and Drawings • Bidding Documents • Cost Estimates, Specifications |

General Experience by Providing the List of Projects/Assignments Performed in the Past 06 Years

| Sr. No. | Name of Project | Location | Client | Project Description | Implementation | | Total Cost of Project (Rs million) | Cost of Consultancy Services provided by the Firm | Actual Services Provided by the Consultant |
|---------|--|----------------|-------------------------|-------------------------------------|----------------|------------|------------------------------------|---|---|
| | | | | | Start | Completion | | | |
| 11 | ARCO PLASTIC SUNDER LAHORE | LAHORE | ARCO PLASTICS (PVT) LTD | Multi story and Industrial building | | | 75 | 0.86 | <ul style="list-style-type: none"> • Data Collection • Design Review and Condition Survey • Survey and Investigations • Structures Design • Public health design • Electrical and Electrification Design • Detailed Design and Drawings • Bidding Documents • Cost Estimates, Specifications |
| 12 | CANOPY FOR TOTAL | TOTAL PAKISTAN | TOTAL | Steel Shed Designe | | | 8 | 0.09 | <ul style="list-style-type: none"> • Data Collection • Design Review and Condition Survey • Survey and Investigations • Structures Design • Public health design • Electrical and Electrification Design • Detailed Design and Drawings • Bidding Documents • Cost Estimates, Specifications |
| 13 | PROPOSED BUILDING OF KAMRAN SIDDIQUE AT BAHARIA TOWN, LAHORE | LAHORE | KAMRAN SIDDIQUE | Multi story building | | | 25 | 0.29 | <ul style="list-style-type: none"> • Data Collection • Design Review and Condition Survey • Survey and Investigations • Structures Design • Public health design • Electrical and Electrification Design • Detailed Design and Drawings • Bidding Documents • Cost Estimates, Specifications |
| 14 | MEDICAL COLLEGE KHARIAN | KHARIAN | C.M.H MEDICAL COLLEGE | MULTI STORY BUILDING | | | 100 | 1.15 | <ul style="list-style-type: none"> • Data Collection • Design Review and Condition Survey • Survey and Investigations • Structures Design • Public health design • Electrical and Electrification Design • Detailed Design and Drawings • Bidding Documents • Cost Estimates, Specifications |
| 15 | BRIGHTO PAINTS FASIALABAD | FAISALABAD | ENGINEER MUHAMMAD USMAN | MULTI STORY AND INDUSTRIAL BUILDING | | | 10 | 0.12 | <ul style="list-style-type: none"> • Data Collection • Design Review and Condition Survey • Survey and Investigations |

General Experience by Providing the List of Projects/Assignments Performed in the Past 06 Years

| Sr. No. | Name of Project | Location | Client | Project Description | Implementation | | Total Cost of Project (Rs million) | Cost of Consultancy Services provided by the Firm | Actual Services Provided by the Consultant |
|---------|-----------------|----------|--------|----------------------|----------------|------------|------------------------------------|---|--|
| | | | | | Start | Completion | | | |
| | | | | | | | | | <ul style="list-style-type: none"> • Structures Design • Public health design • Electrical and Electification Design • Detailed Design and Drawings • Bidding Documents • Cost Estimates, Specifications |
| 16 | MASJID AT DHA | LAHORE | DHA | MULTI STORY BUILDING | | | 20 | 0.23 | <ul style="list-style-type: none"> • Data Collection • Design Review and Condition Survey • Survey and Investigations • Structures Design • Public health design • Electrical and Electification Design • Detailed Design and Drawings • Bidding Documents • Cost Estimates, Specifications |

General Experience by Providing the List of Projects/Assignments Performed in the Past 06 Years

| Sr. No. | Name of Project | Location | Client | Project Description | Implementation | | Total Cost of Project (Rs million) | Cost of Consultancy Services provided by the Firm | Actual Services Provided by the Consultant |
|---------|---|----------|--------------------------------------|-------------------------------------|----------------|------------|------------------------------------|---|---|
| | | | | | Start | Completion | | | |
| 17 | TERRANOVA LAHORE | LAHORE | MR. USMAN HAMEED | MULTI STORY AND INDUSTRIAL BUILDING | | | 25 | 0.29 | <ul style="list-style-type: none"> • Data Collection • Design Review and Condition Survey • Survey and Investigations • Structures Design • Public health design • Electrical and Electrification Design • Detailed Design and Drawings • Bidding Documents • Cost Estimates, Specifications |
| 18 | NEW HEAD OFFICE BUILDING FOR 6 SIGMA RAIWIND LAHORE | LAHORE | DERENCE HOUSING AUTHORITY | MULTI STORY AND INDUSTRIAL BUILDING | | | 80 | 0.92 | <ul style="list-style-type: none"> • Data Collection • Design Review and Condition Survey • Survey and Investigations • Structures Design • Public health design • Electrical and Electrification Design • Detailed Design and Drawings • Bidding Documents • Cost Estimates, Specifications |
| 19 | MOSQUE AT NESPAK SOCIETY LAHORE | LAHORE | NESPAK EMPLOYEES COOPERATIVE SOCIETY | MULTI STORY BUILDING | | | 20 | 0.23 | <ul style="list-style-type: none"> • Data Collection • Design Review and Condition Survey • Survey and Investigations • Structures Design • Public health design • Electrical and Electrification Design • Detailed Design and Drawings • Bidding Documents • Cost Estimates, Specifications |
| 20 | AGOSH ALKHIDMAT MURREE | MURREE | AL- KHIDMAT FOUNDATION | MULTI STORY BUILDING | | | 80 | 0.92 | <ul style="list-style-type: none"> • Data Collection • Design Review and Condition Survey • Survey and Investigations • Structures Design • Public health design • Electrical and Electrification Design • Detailed Design and Drawings • Bidding Documents • Cost Estimates, Specifications |
| 21 | PUNJAB SCHOOL AT SARGODHA | SARGODHA | THE PUNJAB SCHOOL | MULTI STORY BUILDING | | | 70 | 0.81 | <ul style="list-style-type: none"> • Data Collection • Design Review and Condition Survey • Survey and Investigations |

General Experience by Providing the List of Projects/Assignments Performed in the Past 06 Years

| Sr. No. | Name of Project | Location | Client | Project Description | Implementation | | Total Cost of Project (Rs million) | Cost of Consultancy Services provided by the Firm | Actual Services Provided by the Consultant |
|---------|--|-------------------|------------------------|-------------------------------------|----------------|------------|------------------------------------|---|--|
| | | | | | Start | Completion | | | |
| | | | | | | | | | <ul style="list-style-type: none"> • Structures Design • Public health design • Electrical and Electification Design • Detailed Design and Drawings • Bidding Documents • Cost Estimates, Specifications |
| 22 | VIRTUAL UNIVERSITY JARANWALA | JARANWALA | MR. MUHAMMAD SHOAIL | MULTI STORY AND INDUSTRIAL BUILDING | | | 65 | 0.75 | <ul style="list-style-type: none"> • Data Collection • Design Review and Condition Survey • Survey and Investigations • Structures Design • Public health design • Electrical and Electification Design • Detailed Design and Drawings • Bidding Documents • Cost Estimates, Specifications |
| 23 | PLAZA FOR EXPO GOLD JOHAR TOWN LAHORE | JOHAR TOWN LAHORE | JB BUILDER & DEVELOPER | MULTI STORY AND INDUSTRIAL BUILDING | FEB, 2009 | NOV 2017 | 70 | 0.81 | <ul style="list-style-type: none"> • Data Collection • Design Review and Condition Survey • Survey and Investigations • Structures Design • Public health design • Electrical and Electification Design • Detailed Design and Drawings • Bidding Documents • Cost Estimates, Specifications |
| 24 | REHABILITATION WORK AT UNITED HEAD OFFICE LAHORE | LAHORE | MR SANA ULLAH CH. | MULTI STORY AND INDUSTRIAL BUILDING | NOV 2016 | DEC 2017 | 10 | 0.12 | <ul style="list-style-type: none"> • Data Collection • Design Review and Condition Survey • Survey and Investigations • Structures Design • Public health design • Electrical and Electification Design • Detailed Design and Drawings • Bidding Documents • Cost Estimates, Specifications |
| 25 | AL KHIDMAT MULTAN | MULTAN | AL- KHIDMAT FOUNDATION | MULTI STORY BUILDING | MARCH 2017 | NOV 2017 | 80 | 0.92 | <ul style="list-style-type: none"> • Data Collection • Design Review and Condition Survey • Survey and Investigations • Structures Design • Public health design • Electrical and Electification Design |

General Experience by Providing the List of Projects/Assignments Performed in the Past 06 Years

| Sr. No. | Name of Project | Location | Client | Project Description | Implementation | | Total Cost of Project (Rs million) | Cost of Consultancy Services provided by the Firm | Actual Services Provided by the Consultant |
|---------|--|--------------------|--------------------------------------|-------------------------------------|----------------|------------|------------------------------------|---|--|
| | | | | | Start | Completion | | | |
| | | | | | | | | | <ul style="list-style-type: none"> • Detailed Design and Drawings • Bidding Documents • Cost Estimates, Specifications |
| 26 | CONSTRUCTION WORK AT NFC HEAD OFFICE | LAHORE | NFC | MULTI STORY BUILDING | Mar-17 | Dec-17 | 3 | 0.03 | <ul style="list-style-type: none"> • Data Collection • Design Review and Condition Survey • Survey and Investigations • Structures Design • Public health design • Electrical and Electification Design • Detailed Design and Drawings • Bidding Documents • Cost Estimates, Specifications |
| 27 | NASEEMA KHATOON MEMORIAL TRUST SCHOOL GUJRANWALA | GUJRANWALA | BOD OF NASEEM KHATOON MEMORIAL TRUST | MULTI STORY AND INDUSTRIAL BUILDING | Feb-17 | Oct-17 | 25 | 0.29 | <ul style="list-style-type: none"> • Data Collection • Design Review and Condition Survey • Survey and Investigations • Structures Design • Public health design • Electrical and Electification Design • Detailed Design and Drawings • Bidding Documents • Cost Estimates, Specifications |
| 28 | MARRIAGE HALL AT TANDINWALA | TANDINWALA | | MULTI STORY BUILDING | May-17 | Jun-17 | 20 | 0.23 | <ul style="list-style-type: none"> • Data Collection • Design Review and Condition Survey • Survey and Investigations • Structures Design • Public health design • Electrical and Electification Design • Detailed Design and Drawings • Bidding Documents • Cost Estimates, Specifications |
| 29 | AUDITRIUM AT MANSOORA | MULTAN ROAD LAHORE | JAMAAT-E-ISLAMI | MULTI STORY AND INDUSTRIAL BUILDING | Nov-17 | Dec-17 | 12 | 0.14 | <ul style="list-style-type: none"> • Data Collection • Design Review and Condition Survey • Survey and Investigations • Structures Design • Public health design • Electrical and Electification Design • Detailed Design and Drawings • Bidding Documents • Cost Estimates, Specifications |

General Experience by Providing the List of Projects/Assignments Performed in the Past 06 Years

| Sr. No. | Name of Project | Location | Client | Project Description | Implementation | | Total Cost of Project (Rs million) | Cost of Consultancy Services provided by the Firm | Actual Services Provided by the Consultant |
|---------|---|-------------------------|---------------------------------|---|----------------|------------|------------------------------------|---|--|
| | | | | | Start | Completion | | | |
| 30 | QUEEN MEDICAL COLLEGE FERROZEPUR LAHORE | LAHORE | QUEEN MEDICAL COLLEGE | AUDIRORUM, BOUNDER WALL, EXTERNAL DEVELOPMENT, HOSPITAL AND MEDICAL COLLEGE | Feb-17 | Dec-17 | 200 | 2.30 | <ul style="list-style-type: none"> • Data Collection • Design Review and Condition Survey • Survey and Investigations • Structures Design • Public health design • Electrical and Electification Design • Detailed Design and Drawings • Bidding Documents • Cost Estimates, Specifications |
| 31 | AL KHIDMAT SHEIKHUPURA | SHEIKHUPURA | Foundation of Faithful Pakistan | girls hostel, high School, Masjid | May-17 | Jul-17 | 80 | 0.92 | <ul style="list-style-type: none"> • Data Collection • Design Review and Condition Survey • Survey and Investigations • Structures Design • Public health design • Electrical and Electification Design • Detailed Design and Drawings • Bidding Documents • Cost Estimates, Specifications |
| 32 | PUNJAB FOOD AUTHORITY | NEW MUSLIM TOWN, LAHORE | PUNJAB FOOD AUTHORITY | MULTI STORY BUILDING | May-17 | Jun-17 | 75 | 0.86 | <ul style="list-style-type: none"> • Data Collection • Design Review and Condition Survey • Survey and Investigations • Structures Design • Public health design • Electrical and Electification Design • Detailed Design and Drawings • Bidding Documents • Cost Estimates, Specifications |
| 33 | FACTORY BUILDING FOR HEALTH CAPSULE PAKISTAN AT PLOT # 25 FEDMIC FAISALABAD | FAISALABAD | HEALTH CAPSULE PAKISTAN PVT LTD | MULTI STORY AND INDUSTRIAL BUILDING | Nov-17 | Dec-17 | 100 | 1.15 | <ul style="list-style-type: none"> • Data Collection • Design Review and Condition Survey • Survey and Investigations • Structures Design • Public health design • Electrical and Electification Design • Detailed Design and Drawings • Bidding Documents • Cost Estimates, Specifications |
| 34 | CONSTRUCTION OF FACTORY BUILDING FOR DEELUX SPORTS SAILKOT | SAILKOT | MR. SOHAIL ASHRAF | MULTI STORY AND INDUSTRIAL BUILDING | Oct-17 | Dec-17 | 80 | 0.92 | <ul style="list-style-type: none"> • Data Collection • Design Review and Condition Survey • Survey and Investigations |

General Experience by Providing the List of Projects/Assignments Performed in the Past 06 Years

| Sr. No. | Name of Project | Location | Client | Project Description | Implementation | | Total Cost of Project (Rs million) | Cost of Consultancy Services provided by the Firm | Actual Services Provided by the Consultant |
|---------|---|--------------------------------|--|---|----------------|--------------|------------------------------------|---|--|
| | | | | | Start | Completion | | | |
| | SAILKOT | | | | | | | | <ul style="list-style-type: none"> • Structures Design • Public health design • Electrical and Electification Design • Detailed Design and Drawings • Bidding Documents • Cost Estimates, Specifications |
| 35 | CENTRAL PARK UNIVERSITY LAHORE | LAHORE | M/S URBAN DEVELOPER, LAHORE | MULTI STORY BUILDING | 17-May | Dec-17 | 100 | 1.15 | <ul style="list-style-type: none"> • Data Collection • Design Review and Condition Survey • Survey and Investigations • Structures Design • Public health design • Electrical and Electification Design • Detailed Design and Drawings • Bidding Documents • Cost Estimates, Specifications |
| 36 | NEW SOAP LINES AT NIMIR | SHEIKHPUR A | NIMIR INDUSTRIAL CHAMICALS LIMITED, LAHORE | MULTI STORY AND INDUSTRIAL BUILDING | Sep-17 | Dec-17 | 80 | 0.92 | <ul style="list-style-type: none"> • Data Collection • Design Review and Condition Survey • Survey and Investigations • Structures Design • Public health design • Electrical and Electification Design • Detailed Design and Drawings • Bidding Documents • Cost Estimates, Specifications |
| 37 | FACTORY BUILDING FOR AS STEEL AT SKEIKHPURA SHARQPURA ROAD LAHORE | SKEIKHPURA ROAD SHARQPURA | A.S GROUP OF STEEL INDUSTRIES | MULTI STORY AND INDUSTRIAL BUILDING | JANUARY 2018 | JANUARY 2018 | 80 | 0.92 | <ul style="list-style-type: none"> • Data Collection • Design Review and Condition Survey • Survey and Investigations • Structures Design • Public health design • Electrical and Electification Design • Detailed Design and Drawings • Bidding Documents • Cost Estimates, Specifications |
| 38 | SMART BRANCH OF BANK OF PUNJAB | SMART BRANCH OF BANK OF PUNJAB | BANK OF PUNJAB | FOUR ZONE THREE KOT CHUTTA, D.G. KHAN (2-B) SILLANWALI SARGODHA (2-A) TAKHT BAHAI DISTRICT MARDAR (2-B) | JANUARY 2018 | July, 2018 | 10 | 0.12 | <ul style="list-style-type: none"> • Data Collection • Design Review and Condition Survey • Survey and Investigations • Structures Design • Public health design • Electrical and Electification Design • Detailed Design and Drawings • Bidding Documents |

General Experience by Providing the List of Projects/Assignments Performed in the Past 06 Years

| Sr. No. | Name of Project | Location | Client | Project Description | Implementation | | Total Cost of Project (Rs million) | Cost of Consultancy Services provided by the Firm | Actual Services Provided by the Consultant |
|---------|--|--|-----------------------------------|-------------------------------------|----------------|------------|------------------------------------|---|--|
| | | | | | Start | Completion | | | |
| | | | | | | | | | <ul style="list-style-type: none"> • Cost Estimates, Specifications |
| 39 | CARDIAC HOSPITAL TRADE CENTER JOHAR TOWN LAHORE | TRADE CENTER M.A JOHAR TOWN, SCHEME LAHORE | MR. MUBASHER AHMAD | MULTI STORY BUILDING | Sep-18 | Oct-18 | 180 | 2.07 | <ul style="list-style-type: none"> • Data Collection • Design Review and Condition Survey • Survey and Investigations • Structures Design • Public health design • Electrical and Electification Design • Detailed Design and Drawings • Bidding Documents • Cost Estimates, Specifications |
| 40 | OFFICE BLOCK FOR FACTORY OF MR AYUB AT RAIWIND MANGA ROAD LAHORE | LAHORE | MR. UMAIR AYUB | MULTI STORY AND INDUSTRIAL BUILDING | Jan-18 | Mar-18 | 95 | 1.09 | <ul style="list-style-type: none"> • Data Collection • Design Review and Condition Survey • Survey and Investigations • Structures Design • Public health design • Electrical and Electification Design • Detailed Design and Drawings • Bidding Documents • Cost Estimates, Specifications |
| 41 | SHELL STRUCTURE AT NIMIR INDUSTRIAL CHEMICAL, SHEIKHPURA | SHEIKHPUR A | NIMIR INDUSTRIAL CHEMICAL, LAHORE | MULTI STORY AND INDUSTRIAL BUILDING | Feb-18 | Apr-18 | 100 | 1.15 | <ul style="list-style-type: none"> • Data Collection • Design Review and Condition Survey • Survey and Investigations • Structures Design • Public health design • Electrical and Electification Design • Detailed Design and Drawings • Bidding Documents • Cost Estimates, Specifications |
| 42 | AAGOSH MURREE | MURREE | AL-KHIDUMAT PAKISTAN | MUSJID, ADMIN BLOCK HOSTAL, SCHOOL | Jul-18 | Aug-18 | 25 | 0.29 | <ul style="list-style-type: none"> • Data Collection • Design Review and Condition Survey • Survey and Investigations • Structures Design • Public health design • Electrical and Electification Design • Detailed Design and Drawings • Bidding Documents • Cost Estimates, Specifications |
| 43 | ICE CREAM COLD STORAGE BUILDING | LAHORE | M/S C&B MARKETING | MULTI STORY AND INDUSTRIAL BUILDING | Feb-18 | Apr-18 | 15 | 0.17 | <ul style="list-style-type: none"> • Data Collection • Design Review and Condition Survey |

General Experience by Providing the List of Projects/Assignments Performed in the Past 06 Years

| Sr. No. | Name of Project | Location | Client | Project Description | Implementation | | Total Cost of Project (Rs million) | Cost of Consultancy Services provided by the Firm | Actual Services Provided by the Consultant |
|---------|--|-------------|---------------------------------|-------------------------------------|----------------|------------|------------------------------------|---|--|
| | | | | | Start | Completion | | | |
| | ,MOUZA KACHA ,LAHORE | | SERVICES | | | | | | <ul style="list-style-type: none"> • Survey and Investigations • Structures Design • Public health design • Electrical and Electification Design • Detailed Design and Drawings • Bidding Documents • Cost Estimates, Specifications |
| 44 | THEME PARK AT BAHRIA | LAHORE | BAHRIA TOWN, LAHORE | MULTI STORY BUILDING | Jul-18 | Sep-18 | 200 | 2.30 | <ul style="list-style-type: none"> • Data Collection • Design Review and Condition Survey • Survey and Investigations • Structures Design • Public health design • Electrical and Electification Design • Detailed Design and Drawings • Bidding Documents • Cost Estimates, Specifications |
| 45 | FIRE RANGE AT MULTAN, CANTT | MULTAN | HOSPITAL AT PHOOL NAGAR, MULTAN | MULTI STORY AND INDUSTRIAL BUILDING | Apr-18 | May-18 | 10 | 0.12 | <ul style="list-style-type: none"> • Data Collection • Design Review and Condition Survey • Survey and Investigations • Structures Design • Public health design • Electrical and Electification Design • Detailed Design and Drawings • Bidding Documents • Cost Estimates, Specifications |
| 46 | PLAZA FOR DR AFTAB CHATTA AT CANAL VIEW LAHORE | LAHORE | DR AFTAB CHATTA | MULTI STORY BUILDING | Apr-18 | Jul-18 | 8.5 | 0.10 | <ul style="list-style-type: none"> • Data Collection • Design Review and Condition Survey • Survey and Investigations • Structures Design • Public health design • Electrical and Electification Design • Detailed Design and Drawings • Bidding Documents • Cost Estimates, Specifications |
| 47 | BEACON HOUSE SCHOOL SHEIKHPURA | SHEIKHPUR A | BEACON HOUSE SCHOOL | MULTI STORY BUILDING | Jun-18 | Aug-18 | 80 | 0.92 | <ul style="list-style-type: none"> • Data Collection • Design Review and Condition Survey • Survey and Investigations |

General Experience by Providing the List of Projects/Assignments Performed in the Past 06 Years

| Sr. No. | Name of Project | Location | Client | Project Description | Implementation | | Total Cost of Project (Rs million) | Cost of Consultancy Services provided by the Firm | Actual Services Provided by the Consultant |
|---------|--|--------------------------------------|-----------------------|-------------------------------------|----------------|-------------|------------------------------------|---|--|
| | | | | | Start | Completion | | | |
| | | | | | | | | | <ul style="list-style-type: none"> • Structures Design • Public health design • Electrical and Electification Design • Detailed Design and Drawings • Bidding Documents • Cost Estimates, Specifications |
| 48 | SIX AT PARK PLAZA BUILDING AT USA | USA | SIX AT PARK PLAZA | MULTI STORY BUILDING | Feb-18 | Nov-18 | 120 | 1.38 | <ul style="list-style-type: none"> • Data Collection • Design Review and Condition Survey • Survey and Investigations • Structures Design • Public health design • Electrical and Electification Design • Detailed Design and Drawings • Bidding Documents • Cost Estimates, Specifications |
| 49 | PARKING FACILITY AT HD-1, KHURRIANWALA, FAISALABAD | KHURRIANWALA FAISALABAD | INTERLOOP LIMITED | MULTI STORY AND INDUSTRIAL BUILDING | Jul-18 | AUGHST 2018 | 5 | 0.06 | <ul style="list-style-type: none"> • Data Collection • Design Review and Condition Survey • Survey and Investigations • Structures Design • Public health design • Electrical and Electification Design • Detailed Design and Drawings • Bidding Documents • Cost Estimates, Specifications |
| 50 | FACTORY FOR PRISMATECH AT PLOT G-51, FAIDMIC FSD | INDUSTRIAL ESTATE, FIEDMC FAISALABAD | PRISMA TECH PVT LTD | MULTI STORY AND INDUSTRIAL BUILDING | Jan-18 | Mar-18 | 50 | 0.58 | <ul style="list-style-type: none"> • Data Collection • Design Review and Condition Survey • Survey and Investigations • Structures Design • Public health design • Electrical and Electification Design • Detailed Design and Drawings • Bidding Documents • Cost Estimates, Specifications |
| 51 | GATE BUILDING FOR CANTT AREA AT TURBAT | TURBAT BALOCHISTAN | FRONTIER CONSTABULARY | MULTI STORY BUILDING | Oct-18 | Nov-18 | 100 | 1.15 | <ul style="list-style-type: none"> • Data Collection • Design Review and Condition Survey |

General Experience by Providing the List of Projects/Assignments Performed in the Past 06 Years

| Sr. No. | Name of Project | Location | Client | Project Description | Implementation | | Total Cost of Project (Rs million) | Cost of Consultancy Services provided by the Firm | Actual Services Provided by the Consultant |
|---------|--|--------------------------|-------------------------|-------------------------------------|----------------|------------|------------------------------------|---|--|
| | | | | | Start | Completion | | | |
| | | | | | | | | | <ul style="list-style-type: none"> • Survey and Investigations • Structures Design • Public health design • Electrical and Electification Design • Detailed Design and Drawings • Bidding Documents • Cost Estimates, Specifications |
| 52 | REHABILITATION WORK AT WAH CANTT | WAH CANN RAWALPINDI | ENGINEER MUHAMMAD RAFIQ | MULTI STORY BUILDING | Aug-18 | Sep-18 | 50 | 0.58 | <ul style="list-style-type: none"> • Data Collection • Design Review and Condition Survey • Survey and Investigations • Structures Design • Public health design • Electrical and Electification Design • Detailed Design and Drawings • Bidding Documents • Cost Estimates, Specifications |
| 53 | PIPE RACK AT INTERLOOP HD-3 LAHORE | MANGA RIWAND ROAD LAHORE | INTERLOOP LIMITED | MULTI STORY AND INDUSTRIAL BUILDING | Feb-18 | Mar-18 | 30 | 0.35 | <ul style="list-style-type: none"> • Data Collection • Design Review and Condition Survey • Survey and Investigations • Structures Design • Public health design • Electrical and Electification Design • Detailed Design and Drawings • Bidding Documents • Cost Estimates, Specifications |
| 54 | FACTORY BUILDING FOR UMER CONCRETE PRODUCTS AT JARANWALA | JARANWALA | MR. MUSHTAQ AHMAD | MULTI STORY AND INDUSTRIAL BUILDING | Nov-18 | Dec-18 | 25 | 0.29 | <ul style="list-style-type: none"> • Data Collection • Design Review and Condition Survey • Survey and Investigations • Structures Design • Public health design • Electrical and Electification Design • Detailed Design and Drawings • Bidding Documents • Cost Estimates, Specifications |
| 55 | MARQUEE AT KHASRA | MOUZA | MIAN | MULTI STORY BUILDING | Sep-18 | Dec-18 | 30 | 0.35 | <ul style="list-style-type: none"> • Data Collection |

General Experience by Providing the List of Projects/Assignments Performed in the Past 06 Years

| Sr. No. | Name of Project | Location | Client | Project Description | Implementation | | Total Cost of Project (Rs million) | Cost of Consultancy Services provided by the Firm | Actual Services Provided by the Consultant |
|---------|--|----------------------|--------------------------------|-------------------------------------|----------------|------------|------------------------------------|---|---|
| | | | | | Start | Completion | | | |
| | | KANJIRAN LAHORE. | MUHAMMAD TAHIR | | | | | | <ul style="list-style-type: none"> • Design Review and Condition Survey • Survey and Investigations • Structures Design • Public health design • Electrical and Electrification Design • Detailed Design and Drawings • Bidding Documents • Cost Estimates, Specifications |
| 56 | SHOOL BUILDING AT RAIWIND | RAIWIND ROAD LAHORE. | FATIMA FREEDOM RESOURCE CENTER | MULTI STORY AND INDUSTRIAL BUILDING | Dec-18 | Dec-18 | 20 | 0.23 | <ul style="list-style-type: none"> • Data Collection • Design Review and Condition Survey • Survey and Investigations • Structures Design • Public health design • Electrical and Electrification Design • Detailed Design and Drawings • Bidding Documents • Cost Estimates, Specifications |
| 57 | PLAZA BUILDING FOR Mr AMJAD AT PHALIA, MANDI BAHU DIN | MANDI BAHU DIN | MUHAMMAD AMJAD SHOAIL | MULTI STORY BUILDING | Oct-18 | Nov-18 | 15 | 0.17 | <ul style="list-style-type: none"> • Data Collection • Design Review and Condition Survey • Survey and Investigations • Structures Design • Public health design • Electrical and Electrification Design • Detailed Design and Drawings • Bidding Documents • Cost Estimates, Specifications |
| 58 | PLAZA BUILDING FOR Mr MUHAMMD SHAFIQUE AT PHALIA, MANDI BAHU DIN | MANDI BAHU DIN | MR MUHAMMAD SHAFIQUE | MULTI STORY AND INDUSTRIAL BUILDING | Oct-18 | Dec-18 | 10 | 0.12 | <ul style="list-style-type: none"> • Data Collection • Design Review and Condition Survey • Survey and Investigations • Structures Design • Public health design • Electrical and Electrification Design • Detailed Design and Drawings • Bidding Documents • Cost Estimates, Specifications |

General Experience by Providing the List of Projects/Assignments Performed in the Past 06 Years

| Sr. No. | Name of Project | Location | Client | Project Description | Implementation | | Total Cost of Project (Rs million) | Cost of Consultancy Services provided by the Firm | Actual Services Provided by the Consultant |
|---------|---|------------------------|-----------------------|-------------------------------------|----------------|------------|------------------------------------|---|--|
| | | | | | Start | Completion | | | |
| 59 | PROPOSED COMMERCIAL BUILDING FOR MIAN ASHRAF ALI | M.A JOHAR TOWN, LAHORE | MIAN ASHRAF ALI | MULTI STORY BUILDING | Oct-18 | Oct-18 | 15 | 0.17 | <ul style="list-style-type: none"> • Data Collection • Design Review and Condition Survey • Survey and Investigations • Structures Design • Public health design • Electrical and Electification Design • Detailed Design and Drawings • Bidding Documents • Cost Estimates, Specifications |
| 60 | PROPOSED COMMERCIAL BUILDING FOR SHERANWALA GROUP | WAPDA TOWN, LAHORE. | SHERANWALA GROUP | MULTI STORY BUILDING | Nov-18 | Nov-18 | 150 | 1.73 | <ul style="list-style-type: none"> • Data Collection • Design Review and Condition Survey • Survey and Investigations • Structures Design • Public health design • Electrical and Electification Design • Detailed Design and Drawings • Bidding Documents • Cost Estimates, Specifications |
| 61 | INDUSTRIAL BUILDING FOR IPC AT PLOT 25 M3 INDUSTRIAL AREA, FEIDMC, FAISALABAD | INDUSTRIAL FAISALABAD | PAChem Global PVT LTD | MULTI STORY AND INDUSTRIAL BUILDING | Dec-18 | Dec-18 | 100 | 1.15 | <ul style="list-style-type: none"> • Data Collection • Design Review and Condition Survey • Survey and Investigations • Structures Design • Public health design • Electrical and Electification Design • Detailed Design and Drawings • Bidding Documents • Cost Estimates, Specifications |
| 62 | ZAMIN CITY FERAZEPUR ROAD LAHORE | LAHORE | HAJI MUBARK | MULTI STORY BUILDING | JAN 2019 | JAN 2019 | 150 | 1.73 | <ul style="list-style-type: none"> • Data Collection • Design Review and Condition Survey • Survey and Investigations • Structures Design • Public health design • Electrical and Electification Design • Detailed Design and Drawings • Bidding Documents • Cost Estimates, Specifications |

General Experience by Providing the List of Projects/Assignments Performed in the Past 06 Years

| Sr. No. | Name of Project | Location | Client | Project Description | Implementation | | Total Cost of Project (Rs million) | Cost of Consultancy Services provided by the Firm | Actual Services Provided by the Consultant |
|---------|--|--------------------------|-------------------------------|----------------------|----------------|------------|------------------------------------|---|--|
| | | | | | Start | Completion | | | |
| 63 | BOP MONUMENT, VALANCIA LAHORE | LAHORE | RIZCON ENGINEER | MONUMENT ELEVATION | NOV 2019 | NOV 19 | 50 | 0.58 | <ul style="list-style-type: none"> • Data Collection • Design Review and Condition Survey • Survey and Investigations • Structures Design • Public health design • Electrical and Electification Design • Detailed Design and Drawings • Bidding Documents • Cost Estimates, Specifications |
| 64 | Plaza for Mian Ashraf Ali at Plot No. 20-P, M.A. Johar Town Lahore | M.A. JOHAR TOWN, LAHORE. | MIAN ASHRAF ALI | MULTI STORY BUILDING | Jan-19 | FEB 19 | 35 | 0.40 | <ul style="list-style-type: none"> • Data Collection • Design Review and Condition Survey • Survey and Investigations • Structures Design • Public health design • Electrical and Electification Design • Detailed Design and Drawings • Bidding Documents • Cost Estimates, Specifications |
| 65 | COMERCIAL BUILDING PLOT NO. 183 AIR LINES HOUSING SCHEME LAHORE | AIR LINES HOUSING SCHEME | AHSAN SHAMIN S/O SHAMIM AHMAD | MULTI STORY BUILDING | Jan-19 | FEB 19 | 25 | 0.29 | <ul style="list-style-type: none"> • Data Collection • Design Review and Condition Survey • Survey and Investigations • Structures Design • Public health design • Electrical and Electification Design • Detailed Design and Drawings • Bidding Documents • Cost Estimates, Specifications |
| 66 | COMERCIAL BUILDING FOR Mr. ASHRAF JATT AT FAISALABAD, JARANWALA | JARANWALA FAISALABAD | MR. MUHAMMAD ASHRAF JATT | MULTI STORY BUILDING | FEB 19 | Mar-19 | 7.5 | 0.09 | <ul style="list-style-type: none"> • Data Collection • Design Review and Condition Survey • Survey and Investigations • Structures Design • Public health design • Electrical and Electification Design • Detailed Design and Drawings • Bidding Documents • Cost Estimates, Specifications |
| 67 | COMMERCIAL BUILDING NAEMAT KHANA FOR MR. SHAMIM AT | MUGHAL PURA, LAHORE | MR. SHOAIB | MULTI STORY BUILDING | FEB 19 | Apr-19 | | - | <ul style="list-style-type: none"> • Data Collection • Design Review and Condition Survey • Survey and Investigations |

General Experience by Providing the List of Projects/Assignments Performed in the Past 06 Years

| Sr. No. | Name of Project | Location | Client | Project Description | Implementation | | Total Cost of Project (Rs million) | Cost of Consultancy Services provided by the Firm | Actual Services Provided by the Consultant |
|---------|---|---------------------------|-----------------------|-------------------------------------|----------------|------------|------------------------------------|---|--|
| | | | | | Start | Completion | | | |
| | SHOAB AI MUGHALPURA, LAHORE | | | | | | | | <ul style="list-style-type: none"> • Structures Design • Public health design • Electrical and Electification Design • Detailed Design and Drawings • Bidding Documents • Cost Estimates, Specifications |
| 68 | PIPE RACK AT INTERLOOP HD-3 LAHORE | MANGA-RIWAND ROAD, LAHORE | INTERLOOP LIMITED, | MULTI STORY AND INDUSTRIAL BUILDING | FEB 19 | Apr-19 | | - | <ul style="list-style-type: none"> • Data Collection • Design Review and Condition Survey • Survey and Investigations • Structures Design • Public health design • Electrical and Electification Design • Detailed Design and Drawings • Bidding Documents • Cost Estimates, Specifications |
| 69 | STYLE TEXTILE PIPE TRUSS AT BUCHER KHANA DRAIN | RIWAND ROAD LAHORE. | STYLE TEXTILE PVT LTD | MULTI STORY AND INDUSTRIAL BUILDING | FEB 19 | May-19 | 5 | 0.06 | <ul style="list-style-type: none"> • Data Collection • Design Review and Condition Survey • Survey and Investigations • Structures Design • Public health design • Electrical and Electification Design • Detailed Design and Drawings • Bidding Documents • Cost Estimates, Specifications |
| 70 | DIESEL UNLOADING TANK OF "STYLE TEXTILE PLOT 83-M, QIE, KOT LAKHPAT, LAHORE | KOT LAKHPAT, LAHORE | STYLE TEXTILE PVT LTD | MULTI STORY AND INDUSTRIAL BUILDING | Mar-19 | Apr-19 | 10 | 0.12 | <ul style="list-style-type: none"> • Data Collection • Design Review and Condition Survey • Survey and Investigations • Structures Design • Public health design • Electrical and Electification Design • Detailed Design and Drawings • Bidding Documents • Cost Estimates, Specifications |
| 71 | COMERCIAL BUILDING FOR ABDUL RAZZAQ AT MIAN CHANNU | MIAN CHANNU | MR. ABDUL RAZZAQ | MULTI STORY BUILDING | Mar-19 | Apr-19 | 8 | 0.09 | <ul style="list-style-type: none"> • Data Collection • Design Review and Condition Survey • Survey and Investigations • Structures Design • Public health design • Electrical and Electification Design |

General Experience by Providing the List of Projects/Assignments Performed in the Past 06 Years

| Sr. No. | Name of Project | Location | Client | Project Description | Implementation | | Total Cost of Project (Rs million) | Cost of Consultancy Services provided by the Firm | Actual Services Provided by the Consultant |
|---------|---|---------------------|------------------------------|-------------------------------------|----------------|------------|------------------------------------|---|--|
| | | | | | Start | Completion | | | |
| | | | | | | | | | <ul style="list-style-type: none"> • Detailed Design and Drawings • Bidding Documents • Cost Estimates, Specifications |
| 72 | Plaza for Mr. NAEEM IQBAL ,Plot No. 330-G-III, M.A. Johar Town Lahore | JOHAR TOWN, LAHORE. | MR. NAEEM IQBAL | MULTI STORY AND INDUSTRIAL BUILDING | Apr-19 | Apr-19 | 80 | 0.92 | <ul style="list-style-type: none"> • Data Collection • Design Review and Condition Survey • Survey and Investigations • Structures Design • Public health design • Electrical and Electification Design • Detailed Design and Drawings • Bidding Documents • Cost Estimates, Specifications |
| 73 | ETP FOR COLGATE PALMOLIVE PAKISTAN KOTRI HYDERABAD | HADERABAD | COLGATE PALMOVLE PAKISTAN | MULTI STORY AND INDUSTRIAL BUILDING | Apr-19 | May-19 | 50 | 0.58 | <ul style="list-style-type: none"> • Data Collection • Design Review and Condition Survey • Survey and Investigations • Structures Design • Public health design • Electrical and Electification Design • Detailed Design and Drawings • Bidding Documents • Cost Estimates, Specifications |
| 74 | FOUR BROTHERS AGRI PLANT NEAR ROHI NALA LAHORE | ROHI NALA LAHORE | FOUR BROTHERS GROUP PAKISTAN | MULTI STORY AND INDUSTRIAL BUILDING | Mar-19 | Jun-19 | 65 | 0.75 | <ul style="list-style-type: none"> • Data Collection • Design Review and Condition Survey • Survey and Investigations • Structures Design • Public health design • Electrical and Electification Design • Detailed Design and Drawings • Bidding Documents • Cost Estimates, Specifications |
| 75 | HAJI MUHAMMAD RICE PROCESSING MILLS | MURIDKE FEROZWALA | HAJI AMEENULLAH | MULTI STORY BUILDING | Jul-19 | Aug-19 | 80 | 0.92 | <ul style="list-style-type: none"> • Data Collection • Design Review and Condition Survey • Survey and Investigations • Structures Design • Public health design • Electrical and Electification Design • Detailed Design and Drawings |

General Experience by Providing the List of Projects/Assignments Performed in the Past 06 Years

| Sr. No. | Name of Project | Location | Client | Project Description | Implementation | | Total Cost of Project (Rs million) | Cost of Consultancy Services provided by the Firm | Actual Services Provided by the Consultant |
|---------|--|---------------------|--------------------------|--------------------------------------|----------------|------------|------------------------------------|---|--|
| | | | | | Start | Completion | | | |
| | | | | | | | | | <ul style="list-style-type: none"> • Bidding Documents • Cost Estimates, Specifications |
| 76 | PARAMOUNT DISTRIBUTORS, LAHORE | KASUR ROAD KASUR | PARAMOUNT PHARMAEUTICALS | MULTI STORY BUILDING | Apr-19 | May-19 | 75 | 0.86 | <ul style="list-style-type: none"> • Data Collection • Design Review and Condition Survey • Survey and Investigations • Structures Design • Public health design • Electrical and Electification Design • Detailed Design and Drawings • Bidding Documents • Cost Estimates, Specifications |
| 77 | LAHORE SCHOOL SYSTEM KARIM BLOCK LAHORE | KARIM BLOCK LAHORE. | MR. HUSAIN MIRZA | MULTI STORY AND INDUSTRIAL BUILDING | May-19 | Jun-19 | 10 | 0.12 | <ul style="list-style-type: none"> • Data Collection • Design Review and Condition Survey • Survey and Investigations • Structures Design • Public health design • Electrical and Electification Design • Detailed Design and Drawings • Bidding Documents • Cost Estimates, Specifications |
| 78 | Plaza Building for Mr. Nadeem at 35-A Central Park, Lahore | CENTRAL PARK LAHORE | MRS TAHMINA NADEEM | MULTI STORY BUILDING | May-19 | Jun-19 | 10 | 0.12 | <ul style="list-style-type: none"> • Data Collection • Design Review and Condition Survey • Survey and Investigations • Structures Design • Public health design • Electrical and Electification Design • Detailed Design and Drawings • Bidding Documents • Cost Estimates, Specifications |
| 79 | PUNJAB SCHOOL BUILDING AT GT ROAD JHELUM | JHELUM | MR. MUHAMMAD IKRAM RAJA | BOYS BLOCK GIRLS & JUNIOR BOYS BLOCK | May-19 | May-19 | 65 | 0.75 | <ul style="list-style-type: none"> • Data Collection • Design Review and Condition Survey • Survey and Investigations • Structures Design • Public health design • Electrical and Electification Design |

General Experience by Providing the List of Projects/Assignments Performed in the Past 06 Years

| Sr. No. | Name of Project | Location | Client | Project Description | Implementation | | Total Cost of Project (Rs million) | Cost of Consultancy Services provided by the Firm | Actual Services Provided by the Consultant |
|---------|---|-------------------------|-------------------------------|-------------------------------------|----------------|------------|------------------------------------|---|--|
| | | | | | Start | Completion | | | |
| | | | | | | | | | <ul style="list-style-type: none"> • Detailed Design and Drawings • Bidding Documents • Cost Estimates, Specifications |
| 80 | PROPOSED LEARNING RESOURCE CENTRE FOR AGOSH ALKHIDMAT MURREE | MURREE | ALKHIDMAT PAKISTAN | MULTI STORY BUILDING | Jun-19 | Jul-19 | 100 | 1.15 | <ul style="list-style-type: none"> • Data Collection • Design Review and Condition Survey • Survey and Investigations • Structures Design • Public health design • Electrical and Electification Design • Detailed Design and Drawings • Bidding Documents • Cost Estimates, Specifications |
| 81 | ZA PLASTIC SUNDER LAHORE | LAHORE | ZA PLASTIC INDUSTRIAL, LAHORE | MULTI STORY AND INDUSTRIAL BUILDING | May-19 | Jun-19 | 20 | 0.23 | <ul style="list-style-type: none"> • Data Collection • Design Review and Condition Survey • Survey and Investigations • Structures Design • Public health design • Electrical and Electification Design • Detailed Design and Drawings • Bidding Documents • Cost Estimates, Specifications |
| 82 | COMERCIAL BUILDING FOR Mrs SHAZIA SHAFIQUE AT PHALIA | MANDI BAHAUDDIN | MRS SHAZIA SHAFIQUE | MULTI STORY AND INDUSTRIAL BUILDING | Jun-19 | Jun-19 | 10 | 0.12 | <ul style="list-style-type: none"> • Data Collection • Design Review and Condition Survey • Survey and Investigations • Structures Design • Public health design • Electrical and Electification Design • Detailed Design and Drawings • Bidding Documents • Cost Estimates, Specifications |
| 83 | COMMERCIAL BUILDING FOR Mrs. RAFIA NAWAZ RANJHA AT 17 CIVIC CENTER JOHAR TOWN ,LAHORE | M.A HOHAR TOWN, LAHORE. | MRS RAFIA NAWAZ RANJHA | MULTI STORY AND INDUSTRIAL BUILDING | Jul-19 | Jul-19 | 15 | 0.17 | <ul style="list-style-type: none"> • Data Collection • Design Review and Condition Survey • Survey and Investigations • Structures Design • Public health design |

General Experience by Providing the List of Projects/Assignments Performed in the Past 06 Years

| Sr. No. | Name of Project | Location | Client | Project Description | Implementation | | Total Cost of Project (Rs million) | Cost of Consultancy Services provided by the Firm | Actual Services Provided by the Consultant |
|---------|--|-------------------------|----------------------------|-------------------------------------|----------------|------------|------------------------------------|---|--|
| | | | | | Start | Completion | | | |
| | | | | | | | | | <ul style="list-style-type: none"> •Electical and Electification Design •Detailed Design and Drawings •Bidding Documents •Cost Estimates, Specifications |
| 84 | PUNJAB SCHOOL AT TAJ BAGH SCHEME LAHORE | TAJ BAGH SCHEME LAHORE | MIAN MUHAMMAD UMER RASHEED | MULTI STORY AND INDUSTRIAL BUILDING | Jun-19 | Jul-19 | 120 | 1.38 | <ul style="list-style-type: none"> •Data Collection •Design Review and Condition Survey •Survey and Investigations •Structures Design •Public health design •Electical and Electification Design •Detailed Design and Drawings •Bidding Documents •Cost Estimates, Specifications |
| 85 | PLAZA FOR Mr MUHAMMAD SALEEM JOHAR TWON LAHORE | M.A HOHAR TOWN, LAHORE. | MR. MUHAMMAD SALEEM | MULTI STORY AND INDUSTRIAL BUILDING | Aug-19 | Sep-19 | 15 | 0.17 | <ul style="list-style-type: none"> •Data Collection •Design Review and Condition Survey •Survey and Investigations •Structures Design •Public health design •Electical and Electification Design •Detailed Design and Drawings •Bidding Documents •Cost Estimates, Specifications |
| 86 | REHABILITATION OF FACTORY BUILDING FOR M. BILAL QASIM | SHEIKHUPUR A | KR INDUSTRIES PVT LTD | MULTI STORY AND INDUSTRIAL BUILDING | Sep-19 | Oct-19 | 25 | 0.29 | <ul style="list-style-type: none"> •Data Collection •Design Review and Condition Survey •Survey and Investigations •Structures Design •Public health design •Electical and Electification Design •Detailed Design and Drawings •Bidding Documents •Cost Estimates, Specifications |
| 87 | REHABILITATION WORK FOR PTCL DATA CENTER JOHAR TOWN LAHORE | M.A HOHAR TOWN, LAHORE. | PTCL | MULTI STORY AND INDUSTRIAL BUILDING | Oct-19 | Nov-19 | 20 | 0.23 | <ul style="list-style-type: none"> •Data Collection •Design Review and Condition Survey •Survey and Investigations •Structures Design |

General Experience by Providing the List of Projects/Assignments Performed in the Past 06 Years

| Sr. No. | Name of Project | Location | Client | Project Description | Implementation | | Total Cost of Project (Rs million) | Cost of Consultancy Services provided by the Firm | Actual Services Provided by the Consultant |
|---------|---|------------------------|--------------------------------------|--|----------------|------------|------------------------------------|---|--|
| | | | | | Start | Completion | | | |
| | | | | | | | | | <ul style="list-style-type: none"> • Public health design • Electrical and Electification Design • Detailed Design and Drawings • Bidding Documents • Cost Estimates, Specifications |
| 88 | PTCL EXCHANGE BUILDING, DHA, KARACHI | DHA, KARACHI | PTCL | MULTI STORY AND INDUSTRIAL BUILDING | Mar-19 | Mar-19 | 10 | 0.12 | <ul style="list-style-type: none"> • Data Collection • Design Review and Condition Survey • Survey and Investigations • Structures Design • Public health design • Electrical and Electification Design • Detailed Design and Drawings • Bidding Documents • Cost Estimates, Specifications |
| 89 | PUNJAB SCHOOL AT WAPDA TOWN, LAHORE | WAPDA TOWN LAHORE | THE PUNJAB SCHOOL | PRE SCHOOL, GIRLS BLOCK BOYS BLOCK ADMIN BLOCK | May-19 | Dec-19 | 150 | 1.73 | <ul style="list-style-type: none"> • Data Collection • Design Review and Condition Survey • Survey and Investigations • Structures Design • Public health design • Electrical and Electification Design • Detailed Design and Drawings • Bidding Documents • Cost Estimates, Specifications |
| 90 | DIAMOND INDUSTRIES INC. AT NEW INDUSTRIAL AREA, MIR PUR, AZAD KASHMIR | MIR PUR, AZAD KASHMIR | DIAMON INDUSTRIES INC | MULTI STORY AND INDUSTRIAL BUILDING | Nov-19 | Dec-19 | 10 | 0.12 | <ul style="list-style-type: none"> • Data Collection • Design Review and Condition Survey • Survey and Investigations • Structures Design • Public health design • Electrical and Electification Design • Detailed Design and Drawings • Bidding Documents • Cost Estimates, Specifications |
| 91 | TUBEX PACKING (PVT.) LIMITED, LAHORE | FEROZEPUR ROAD LAHORE. | TUBEX PACKING (PVT.) LIMITED, LAHORE | MULTI STORY BUILDING | Dec-19 | Dec-19 | 165 | 1.90 | <ul style="list-style-type: none"> • Data Collection • Design Review and Condition Survey • Survey and Investigations |

General Experience by Providing the List of Projects/Assignments Performed in the Past 06 Years

| Sr. No. | Name of Project | Location | Client | Project Description | Implementation | | Total Cost of Project (Rs million) | Cost of Consultancy Services provided by the Firm | Actual Services Provided by the Consultant |
|---------|---|----------------------|----------------|-------------------------------------|----------------|---------------|------------------------------------|---|--|
| | | | | | Start | Completion | | | |
| | | | | | | | | | <ul style="list-style-type: none"> • Structures Design • Public health design • Electrical and Electification Design • Detailed Design and Drawings • Bidding Documents • Cost Estimates, Specifications |
| 92 | APPARTMENT BUILDING FOR CH. AZAM AT BAHRIA TOWN, LAHORE | BAHRIA TOWN, LAHORE. | CH. AZAM | MULTI STORY BUILDING | Dec-19 | Dec-19 | 200 | 2.30 | <ul style="list-style-type: none"> • Data Collection • Design Review and Condition Survey • Survey and Investigations • Structures Design • Public health design • Electrical and Electification Design • Detailed Design and Drawings • Bidding Documents • Cost Estimates, Specifications |
| 93 | COMMERCIAL BUILDING FOR Mr. SAEED KHAN JOHAR TOWN ,LAHORE | JOHAR TOWN ,LAHORE | MR. SAEED KHAN | MULTI STORY AND INDUSTRIAL BUILDING | JANUARY 2020 | MARCH 2020 | 25 | 0.29 | <ul style="list-style-type: none"> • Data Collection • Design Review and Condition Survey • Survey and Investigations • Structures Design • Public health design • Electrical and Electification Design • Detailed Design and Drawings • Bidding Documents • Cost Estimates, Specifications |
| 94 | MULTISTORIED BUILDING FOR Mr. AFZAL, LAHORE | LAHORE | MR. AFZAL | MULTI STORY BUILDING | FEBRUARY 2020 | FEBRUARY 2020 | 20 | 0.23 | <ul style="list-style-type: none"> • Data Collection • Design Review and Condition Survey • Survey and Investigations • Structures Design • Public health design • Electrical and Electification Design • Detailed Design and Drawings • Bidding Documents • Cost Estimates, Specifications |
| 95 | AFFAN TEXTILE AT GHONA ROAD, FAISALABAD | FAISALABAD | | MULTI STORY AND INDUSTRIAL BUILDING | | | 35 | 0.4025 | <ul style="list-style-type: none"> • Data Collection • Design Review and Condition Survey • Survey and Investigations • Structures Design |

General Experience by Providing the List of Projects/Assignments Performed in the Past 06 Years

| Sr. No. | Name of Project | Location | Client | Project Description | Implementation | | Total Cost of Project (Rs million) | Cost of Consultancy Services provided by the Firm | Actual Services Provided by the Consultant |
|---------|--|---------------------|--|-------------------------------------|----------------|------------|------------------------------------|---|---|
| | | | | | Start | Completion | | | |
| | | | | | | | | | <ul style="list-style-type: none"> • Public health design • Electrical and Electrification Design • Detailed Design and Drawings • Bidding Documents • Cost Estimates, Specifications |
| 96 | ROAD LANE MARKING WITH CATEYES AT MUNICIPAL COPORATION, FAISALABAD | FAISALABAD | | ROAD MARKING CATEYES | Feb-20 | Mar-20 | 7 | 0.0805 | <ul style="list-style-type: none"> • Data Collection • Design Review and Condition Survey • Survey and Investigations • Structures Design • Public health design • Electrical and Electrification Design • Detailed Design and Drawings • Bidding Documents • Cost Estimates, Specifications |
| 97 | COMMERCIAL BUILDING FOR MR. KHALID NASIR AT BAHRIA TOWN LAHORE | BAHRIA TOWN, LAHORE | MR. KHALID NASIR / MR. ZAHEER-UD-DIN / ZAHID | MULTI STORY BUILDING | Mar-20 | Apr-20 | 20 | 0.23 | <ul style="list-style-type: none"> • Data Collection • Design Review and Condition Survey • Survey and Investigations • Structures Design • Public health design • Electrical and Electrification Design • Detailed Design and Drawings • Bidding Documents • Cost Estimates, Specifications |
| 98 | EXTENSION ON BACKSIDE OF UCP FACTORY AT JARANWALA | JARANWALA | MR. MUSHTAQ AHMED CH. | MULTI STORY AND INDUSTRIAL BUILDING | Jan-20 | Feb-20 | 25 | 0.2875 | <ul style="list-style-type: none"> • Data Collection • Design Review and Condition Survey • Survey and Investigations • Structures Design • Public health design • Electrical and Electrification Design • Detailed Design and Drawings • Bidding Documents • Cost Estimates, Specifications |
| 99 | ETP AT SHIKARPUR ROAD, SUKKUR | SUKKUR | SUKKUR BEVERAGES PVT LTD | MULTI STORY AND INDUSTRIAL BUILDING | May-20 | Apr-20 | 25 | 0.2875 | <ul style="list-style-type: none"> • Data Collection • Design Review and Condition Survey • Survey and Investigations • Structures Design • Public health design • Electrical and Electrification Design • Detailed Design and Drawings |

General Experience by Providing the List of Projects/Assignments Performed in the Past 06 Years

| Sr. No. | Name of Project | Location | Client | Project Description | Implementation | | Total Cost of Project (Rs million) | Cost of Consultancy Services provided by the Firm | Actual Services Provided by the Consultant |
|---------|--|-----------------------|--|-------------------------------------|----------------|------------|------------------------------------|---|--|
| | | | | | Start | Completion | | | |
| | | | | | | | | | <ul style="list-style-type: none"> • Bidding Documents • Cost Estimates, Specifications |
| 100 | COMMERCIAL BUILDING FOR MR. QAISER SAJJAD AT 80-C-II PGECHS LAHORE | PGECHS LAHORE. | MR. QAISER SAJJAD | MULTI STORY BUILDING | May-20 | Apr-20 | 15 | 0.1725 | <ul style="list-style-type: none"> • Data Collection • Design Review and Condition Survey • Survey and Investigations • Structures Design • Public health design • Electrical and Electification Design • Detailed Design and Drawings • Bidding Documents • Cost Estimates, Specifications |
| 101 | FACTORY BUILDING FOR EXPERT ADVERTISING & PACKAGING LTD. LAHORE | KOT LAKHPAT LAHORE. | EXPERT ADVERTISING & PACKAGING PVT LTD | MULTI STORY AND INDUSTRIAL BUILDING | Jun-20 | Jul-20 | 45 | 0.5175 | <ul style="list-style-type: none"> • Data Collection • Design Review and Condition Survey • Survey and Investigations • Structures Design • Public health design • Electrical and Electification Design • Detailed Design and Drawings • Bidding Documents • Cost Estimates, Specifications |
| 102 | COMMERCIAL BUILDING AT NESPAK SOCIETY, LAHORE | NESPAK SOCIETY LAHORE | NESPAK ENMLOYEES COOPERATIVE SOCIETY | MULTI STORY BUILDING | Jun-20 | Jul-20 | 20 | 0.23 | <ul style="list-style-type: none"> • Data Collection • Design Review and Condition Survey • Survey and Investigations • Structures Design • Public health design • Electrical and Electification Design • Detailed Design and Drawings • Bidding Documents • Cost Estimates, Specifications |
| 103 | MEP Interloop Raiwind Lahore | MANGA MANDI LAHORE | INTERLOOP PVT LTD | MULTI STORY AND INDUSTRIAL BUILDING | Aug-20 | Sep-20 | 15 | 0.1725 | <ul style="list-style-type: none"> • Data Collection • Design Review and Condition Survey • Survey and Investigations • Structures Design • Public health design • Electrical and Electification Design • Detailed Design and Drawings • Bidding Documents • Cost Estimates, Specifications |
| 104 | ETP FOR BESTWAY | CHAKWAL | BESTWAY | MULTI STORY AND INDUSTRIAL BUILDING | Jul-20 | Jul-20 | 20 | 0.23 | <ul style="list-style-type: none"> • Data Collection |

General Experience by Providing the List of Projects/Assignments Performed in the Past 06 Years

| Sr. No. | Name of Project | Location | Client | Project Description | Implementation | | Total Cost of Project (Rs million) | Cost of Consultancy Services provided by the Firm | Actual Services Provided by the Consultant |
|---------|--|---------------------------------|--------------------------------|-------------------------------------|----------------|------------|------------------------------------|---|--|
| | | | | | Start | Completion | | | |
| | CEMENT Ltd. AT CHAKWAL | | CEMENT | | | | | | <ul style="list-style-type: none"> • Design Review and Condition Survey • Survey and Investigations • Structures Design • Public health design • Electrical and Electification Design • Detailed Design and Drawings • Bidding Documents • Cost Estimates, Specifications |
| 105 | Ufone Office at PECO Road Lahore | LAHORE | PTML | MULTI STORY BUILDING | Mar-20 | Apr-20 | 7 | 0.0805 | <ul style="list-style-type: none"> • Data Collection • Design Review and Condition Survey • Survey and Investigations • Structures Design • Public health design • Electrical and Electification Design • Detailed Design and Drawings • Bidding Documents • Cost Estimates, Specifications |
| 106 | FACTORY BUILDING AT BUND ROAD LAHORE | BUND ROAD, MOUZA BHUMMA, LAHORE | HAJI HAMID IQBAL | MULTI STORY AND INDUSTRIAL BUILDING | Jul-20 | Aug-20 | 80 | 0.92 | <ul style="list-style-type: none"> • Data Collection • Design Review and Condition Survey • Survey and Investigations • Structures Design • Public health design • Electrical and Electification Design • Detailed Design and Drawings • Bidding Documents • Cost Estimates, Specifications |
| 107 | HOSTEL FOR AGOSH ALKHIDMAT AT KONODAS GILGIT | KONODAS GILGIT | AL-KHIDMAT FOUNDATION PAKISTAN | MULTI STORY BUILDING | Aug-20 | Sep-20 | 120 | 1.38 | <ul style="list-style-type: none"> • Data Collection • Design Review and Condition Survey • Survey and Investigations • Structures Design • Public health design • Electrical and Electification Design • Detailed Design and Drawings • Bidding Documents • Cost Estimates, Specifications |
| 108 | REHAB & UPGRAD | GULGARG | TAYYAB | MULTI STORY BUILDING | Aug-20 | Sep-20 | 7 | 0.0805 | <ul style="list-style-type: none"> • Data Collection |

General Experience by Providing the List of Projects/Assignments Performed in the Past 06 Years

| Sr. No. | Name of Project | Location | Client | Project Description | Implementation | | Total Cost of Project (Rs million) | Cost of Consultancy Services provided by the Firm | Actual Services Provided by the Consultant |
|---------|---|--------------------|---------------------------------|-------------------------------------|----------------|------------|------------------------------------|---|--|
| | | | | | Start | Completion | | | |
| | WORK FOR TAYYAB INTERNATIONAL CLOTH, GULBARG, LAHORE | LAHORE | INTERNATIONAL COLTH | | | | | | <ul style="list-style-type: none"> • Design Review and Condition Survey • Survey and Investigations • Structures Design • Public health design • Electrical and Electification Design • Detailed Design and Drawings • Bidding Documents • Cost Estimates, Specifications |
| 109 | APARTMENT BUILDING FOR MUHAMMAD AZAM AT GARDEN TOWN ,LAHORE | GARDEN TOWN LAHORE | MUHAMMAD AZAM & MUHAMMAD FAREED | MULTI STORY BUILDING | Sep-20 | Oct-20 | 200 | 2.3 | <ul style="list-style-type: none"> • Data Collection • Design Review and Condition Survey • Survey and Investigations • Structures Design • Public health design • Electrical and Electification Design • Detailed Design and Drawings • Bidding Documents • Cost Estimates, Specifications |
| 110 | LAND SCAPPING OF ISLAMABAD PTCL | ISLAMABAD | PTCL | MULTI STORY AND INDUSTRIAL BUILDING | Sep-20 | OCT 2020 | 650 | 7.475 | <ul style="list-style-type: none"> • Data Collection • Design Review and Condition Survey • Survey and Investigations • Structures Design • Public health design • Electrical and Electification Design • Detailed Design and Drawings • Bidding Documents • Cost Estimates, Specifications |
| 111 | ETP FOR STAR LABORATORIES AT MULTAN ROAD, LAHORE | CHUNG LAHORE | STAR LABORATORIES | MULTI STORY AND INDUSTRIAL BUILDING | Sep-20 | Oct-20 | 20 | 0.23 | <ul style="list-style-type: none"> • Data Collection • Design Review and Condition Survey • Survey and Investigations • Structures Design • Public health design • Electrical and Electification Design • Detailed Design and Drawings • Bidding Documents • Cost Estimates, Specifications |

General Experience by Providing the List of Projects/Assignments Performed in the Past 06 Years

| Sr. No. | Name of Project | Location | Client | Project Description | Implementation | | Total Cost of Project (Rs million) | Cost of Consultancy Services provided by the Firm | Actual Services Provided by the Consultant |
|---------|--|----------------------------------|-------------------|-------------------------------------|----------------|------------|------------------------------------|---|--|
| | | | | | Start | Completion | | | |
| 112 | MANZOOR PALACE AT LAHORE | JALLO PARK LAHORE | CH. SHAFQAAT ALI | MULTI STORY BUILDING | Oct-20 | Nov-20 | 63 | 0.7245 | <ul style="list-style-type: none"> • Data Collection • Design Review and Condition Survey • Survey and Investigations • Structures Design • Public health design • Electrical and Electification Design • Detailed Design and Drawings • Bidding Documents • Cost Estimates, Specifications |
| 113 | RED'Z CORPORATION AT KHAN MAHAL ROAD, RANG PURA, SIALKOT | RANGPURA, SIALKOT | RED'Z CORPORATION | MULTI STORY AND INDUSTRIAL BUILDING | Oct-20 | Nov-20 | 15 | 0.1725 | <ul style="list-style-type: none"> • Data Collection • Design Review and Condition Survey • Survey and Investigations • Structures Design • Public health design • Electrical and Electification Design • Detailed Design and Drawings • Bidding Documents • Cost Estimates, Specifications |
| 114 | FORMED SURGICAL FOR ADNAN MALK AT MURADPUR ROAD SIALKOT | MURADPUR ROAD SIALKOT | MR. ADNAN MALIK | MULTI STORY BUILDING | Oct-20 | Nov-20 | 25 | 0.2875 | <ul style="list-style-type: none"> • Data Collection • Design Review and Condition Survey • Survey and Investigations • Structures Design • Public health design • Electrical and Electification Design • Detailed Design and Drawings • Bidding Documents • Cost Estimates, Specifications |
| 115 | REQUIREMENTS GROUP, SARWARABAD, KINGRA ROAD, SIALKOT | SARWARABAD, KINGRA ROAD, SIALKOT | MR. MALTOB KHAN | MULTI STORY AND INDUSTRIAL BUILDING | Oct-20 | Nov-20 | 25 | 0.2875 | <ul style="list-style-type: none"> • Data Collection • Design Review and Condition Survey • Survey and Investigations • Structures Design • Public health design • Electrical and Electification Design • Detailed Design and Drawings • Bidding Documents |

General Experience by Providing the List of Projects/Assignments Performed in the Past 06 Years

| Sr. No. | Name of Project | Location | Client | Project Description | Implementation | | Total Cost of Project (Rs million) | Cost of Consultancy Services provided by the Firm | Actual Services Provided by the Consultant |
|---------|--|-------------------|------------------------------------|-------------------------------------|----------------|------------|------------------------------------|---|--|
| | | | | | Start | Completion | | | |
| | | | | | | | | | <ul style="list-style-type: none"> • Cost Estimates, Specifications |
| 116 | Mosque at Falcon Housing Scheme (AFOHS) Lahore | AFOHS, LAHORE. | PAKISTAN AIR FORCE | MULTI STORY BUILDING | Oct-20 | Nov-20 | 35 | 0.4025 | <ul style="list-style-type: none"> • Data Collection • Design Review and Condition Survey • Survey and Investigations • Structures Design • Public health design • Electrical and Electification Design • Detailed Design and Drawings • Bidding Documents • Cost Estimates, Specifications |
| 117 | KFK ENTERPRISES AT 6-C2, MM ALAM ROAD, GULBERG, LAHORE | GULBERG LAHORE | KFK ENTERPRISES, LAHORE. | MULTI STORY AND INDUSTRIAL BUILDING | Nov-20 | Dec-20 | 45 | 0.5175 | <ul style="list-style-type: none"> • Data Collection • Design Review and Condition Survey • Survey and Investigations • Structures Design • Public health design • Electrical and Electification Design • Detailed Design and Drawings • Bidding Documents • Cost Estimates, Specifications |
| 118 | SHAMPOO & HAND SANITIZER AT NIMIR | SHEIKHUPUR A | NIMIR INDUSTRIAL CHEMICALS LIMITED | MULTI STORY AND INDUSTRIAL BUILDING | Dec-20 | Dec-20 | 50 | 0.575 | <ul style="list-style-type: none"> • Data Collection • Design Review and Condition Survey • Survey and Investigations • Structures Design • Public health design • Electrical and Electification Design • Detailed Design and Drawings • Bidding Documents • Cost Estimates, Specifications |
| 119 | STRUCTURA REHABILITATION OF MAK PALACE AT SIALKOT | FATEHGARH SIALKOT | MAK PALACE SIALKOT | MULTI STORY BUILDING | Dec-20 | Dec-20 | 25 | 0.2875 | <ul style="list-style-type: none"> • Data Collection • Design Review and Condition Survey • Survey and Investigations • Structures Design • Public health design • Electrical and Electification Design • Detailed Design and Drawings |

General Experience by Providing the List of Projects/Assignments Performed in the Past 06 Years

| Sr. No. | Name of Project | Location | Client | Project Description | Implementation | | Total Cost of Project (Rs million) | Cost of Consultancy Services provided by the Firm | Actual Services Provided by the Consultant |
|---------|--|-------------------------------------|-----------------------------|-------------------------------------|----------------|------------|------------------------------------|---|--|
| | | | | | Start | Completion | | | |
| | | | | | | | | | <ul style="list-style-type: none"> • Bidding Documents • Cost Estimates, Specifications |
| 120 | CENTRAL PARK MEDICAL COLLAGE | CENTRAL PAK HOUSING SOCIETY LAHORE. | URBAN DEVELOPMENT PVT LTD | MULTI STORY AND INDUSTRIAL BUILDING | FEBRUARY 2021 | MARCH 2021 | 200 | 2.3 | <ul style="list-style-type: none"> • Data Collection • Design Review and Condition Survey • Survey and Investigations • Structures Design • Public health design • Electrical and Electification Design • Detailed Design and Drawings • Bidding Documents • Cost Estimates, Specifications |
| 121 | ORPHAN HOMES FOR ARBT AT FEROEZPUR ROAD LAHORE | FEROEZPUR ROAD LAHORE | M/S ARBT PUNJAB, PAKISTAN | MULTI STORY BUILDING | May-21 | Jun-21 | 140 | 1.61 | <ul style="list-style-type: none"> • Data Collection • Design Review and Condition Survey • Survey and Investigations • Structures Design • Public health design • Electrical and Electification Design • Detailed Design and Drawings • Bidding Documents • Cost Estimates, Specifications |
| 122 | BOXING GYM AND SQUASH COURT AT NISTER PARK LAHORE | NISTER PAK LAHORE | SPORTS BOARD PUNJAB, | MULTI STORY BUILDING | Sep-21 | Oct-21 | 150 | 1.725 | <ul style="list-style-type: none"> • Data Collection • Design Review and Condition Survey • Survey and Investigations • Structures Design • Public health design • Electrical and Electification Design • Detailed Design and Drawings • Bidding Documents • Cost Estimates, Specifications |
| 123 | DIFFERENT STRUCTURES FOR GREEN WOOD SOCIETY AT JHANG | JHANG | GREEN WOOD SOCIETY AT JHANG | MULTI STORY BUILDING | AUGUST, 2021 | Sep-21 | 200 | 2.3 | <ul style="list-style-type: none"> • Data Collection • Design Review and Condition Survey • Survey and Investigations • Structures Design • Public health design • Electrical and Electification Design • Detailed Design and Drawings • Bidding Documents • Cost Estimates, Specifications |
| 124 | NAWAB MALL, | SIALKOT | CH. HABIB ULLAH | MULTI STORY AND INDUSTRIAL BUILDING | Jan-21 | Feb-21 | 30 | 0.345 | <ul style="list-style-type: none"> • Data Collection |

General Experience by Providing the List of Projects/Assignments Performed in the Past 06 Years

| Sr. No. | Name of Project | Location | Client | Project Description | Implementation | | Total Cost of Project (Rs million) | Cost of Consultancy Services provided by the Firm | Actual Services Provided by the Consultant |
|---------|---|----------------------------|--------------------------------|--|----------------|------------|------------------------------------|---|--|
| | | | | | Start | Completion | | | |
| | KASHMIR ROAD, SIALKOT | | | | | | | | <ul style="list-style-type: none"> • Design Review and Condition Survey • Survey and Investigations • Structures Design • Public health design • Electrical and Electification Design • Detailed Design and Drawings • Bidding Documents • Cost Estimates, Specifications |
| 125 | ALI SHER PLAZA AT HIGH STREET ROAD SAHIWAL | NEAR SONERI BANK SAHIWAL | ALI SHER PLAZA | MULTI STORY BUILDING | Jan-21 | Feb-21 | 80 | 0.92 | <ul style="list-style-type: none"> • Data Collection • Design Review and Condition Survey • Survey and Investigations • Structures Design • Public health design • Electrical and Electification Design • Detailed Design and Drawings • Bidding Documents • Cost Estimates, Specifications |
| 126 | THE PUNJAB SCHOOL JALLO CAMPUS LAHORE | JALLO LAHORE | BAJWA DEVELOPERS | MULTI STORY BUILDING | Feb-21 | Mar-21 | 90 | 1.035 | <ul style="list-style-type: none"> • Data Collection • Design Review and Condition Survey • Survey and Investigations • Structures Design • Public health design • Electrical and Electification Design • Detailed Design and Drawings • Bidding Documents • Cost Estimates, Specifications |
| 127 | COMMERCIAL BUILDING FOR Mr. RANA NISAR AT SAHIWAL | GIRLS COLLEGE ROAD SAHIWAL | RANA NISAR AHMAD KHAN | MULTI STORY AND INDUSTRIAL BUILDING | Feb-21 | Mar-21 | 75 | 0.8625 | <ul style="list-style-type: none"> • Data Collection • Design Review and Condition Survey • Survey and Investigations • Structures Design • Public health design • Electrical and Electification Design • Detailed Design and Drawings • Bidding Documents • Cost Estimates, Specifications |
| 128 | RICE PROCESSING PLANT AT OKARA | OKARA | MR. JAHI NUR MUHAMMAD DURRANI, | MAIN PLANT BUILDING MASQUE OFFICE BUILDING | Feb-21 | Mar-21 | 200 | 2.3 | <ul style="list-style-type: none"> • Data Collection • Design Review and Condition Survey • Survey and Investigations • Structures Design |

General Experience by Providing the List of Projects/Assignments Performed in the Past 06 Years

| Sr. No. | Name of Project | Location | Client | Project Description | Implementation | | Total Cost of Project (Rs million) | Cost of Consultancy Services provided by the Firm | Actual Services Provided by the Consultant |
|---------|---|-------------------|---------------------------------------|-------------------------------------|----------------|------------|------------------------------------|---|---|
| | | | | | Start | Completion | | | |
| | | | | | | | | | <ul style="list-style-type: none"> • Public health design • Electrical and Electrification Design • Detailed Design and Drawings • Bidding Documents • Cost Estimates, Specifications |
| 129 | FACTORY FOR CANNON THERMATEK AT FIEDMC FAISALABAD | FAISALABAD | CANNAN THERMATEK (PVT) LTD | MULTI STORY AND INDUSTRIAL BUILDING | Feb-21 | Mar-21 | 120 | 1.38 | <ul style="list-style-type: none"> • Data Collection • Design Review and Condition Survey • Survey and Investigations • Structures Design • Public health design • Electrical and Electrification Design • Detailed Design and Drawings • Bidding Documents • Cost Estimates, Specifications |
| 130 | ETP FOR DIAMOND INDUSTIES AT SIE, RAIWIND, LAHORE | RAIWIND LAHORE. | DIAMOND PAINT INDUSTIES | MULTI STORY AND INDUSTRIAL BUILDING | Feb-21 | Mar-21 | 60 | 0.69 | <ul style="list-style-type: none"> • Data Collection • Design Review and Condition Survey • Survey and Investigations • Structures Design • Public health design • Electrical and Electrification Design • Detailed Design and Drawings • Bidding Documents • Cost Estimates, Specifications |
| 131 | APPARTMENT BUILDING MURREE | MURREE | MR. ZEESHAN SAQIB & MR. FARHAN SHEIKH | MULTI STORY BUILDING | Feb-21 | Mar-21 | 75 | 0.8625 | <ul style="list-style-type: none"> • Data Collection • Design Review and Condition Survey • Survey and Investigations • Structures Design • Public health design • Electrical and Electrification Design • Detailed Design and Drawings • Bidding Documents • Cost Estimates, Specifications |
| 132 | Mr. ABDUL QADIR MAMDOT AT 110-G, MODEL TOWN, LAHORE | MODEL TOWN LAHORE | ABDUL QADIR | MULTI STORY HOUSE | Mar-21 | Apr-21 | 2.5 | 0.02875 | <ul style="list-style-type: none"> • Data Collection • Design Review and Condition Survey • Survey and Investigations • Structures Design • Public health design |

General Experience by Providing the List of Projects/Assignments Performed in the Past 06 Years

| Sr. No. | Name of Project | Location | Client | Project Description | Implementation | | Total Cost of Project (Rs million) | Cost of Consultancy Services provided by the Firm | Actual Services Provided by the Consultant |
|---------|---|----------------------|------------------------------------|-------------------------------------|----------------|--------------|------------------------------------|---|--|
| | | | | | Start | Completion | | | |
| | | | | | | | | | <ul style="list-style-type: none"> •Electical and Electification Design •Detailed Design and Drawings •Bidding Documents •Cost Estimates, Specifications |
| 133 | HOME CARE PROJECT AT NIMIR | BHIKHI, SHEIKHUPUR A | NIMIR INDUSTRIAL CHEMICALS LIMITED | MULTI STORY AND INDUSTRIAL BUILDING | Mar-21 | Apr-21 | 100 | 1.15 | <ul style="list-style-type: none"> •Data Collection •Design Review and Condition Survey •Survey and Investigations •Structures Design •Public health design •Electical and Electification Design •Detailed Design and Drawings •Bidding Documents •Cost Estimates, Specifications |
| 134 | WARE HOUSE AT NIMIR | BHIKHI, SHEIKHUPUR A | NIMIR INDUSTRIAL CHEMICALS LIMITED | MULTI STORY AND INDUSTRIAL BUILDING | Mar-21 | Apr-21 | 120 | 1.38 | <ul style="list-style-type: none"> •Data Collection •Design Review and Condition Survey •Survey and Investigations •Structures Design •Public health design •Electical and Electification Design •Detailed Design and Drawings •Bidding Documents •Cost Estimates, Specifications |
| 135 | FEED MILL AT MURIDKAY | TIWANA AT MURIDKAY | MR. NAIM TIWANA | MULTI STORY AND INDUSTRIAL BUILDING | May-21 | Jun-21 | 50 | 0.575 | <ul style="list-style-type: none"> •Data Collection •Design Review and Condition Survey •Survey and Investigations •Structures Design •Public health design •Electical and Electification Design •Detailed Design and Drawings •Bidding Documents •Cost Estimates, Specifications |
| 136 | DR MUBASHAR HOSPITAL AND RES AT SHAHKOT | SHAHKOT | DR MUBASHAR | HOSPITAL / MULTI STORY BUILDING | Jul-21 | AUGUST, 2021 | 25 | 0.2875 | <ul style="list-style-type: none"> •Data Collection •Design Review and Condition Survey •Survey and Investigations •Structures Design |

General Experience by Providing the List of Projects/Assignments Performed in the Past 06 Years

| Sr. No. | Name of Project | Location | Client | Project Description | Implementation | | Total Cost of Project (Rs million) | Cost of Consultancy Services provided by the Firm | Actual Services Provided by the Consultant |
|---------|--|-------------------------|---------------------|-------------------------------------|----------------|------------|------------------------------------|---|--|
| | | | | | Start | Completion | | | |
| | | | | | | | | | <ul style="list-style-type: none"> • Public health design • Electrical and Electification Design • Detailed Design and Drawings • Bidding Documents • Cost Estimates, Specifications |
| 137 | PAVALION 19 AT KHOR PAKKA, LODHRAN | LODHRAN | SPORTS BOARD PUNJAB | MULTI STORY BUILDING | May-21 | Jun-21 | 30 | 0.345 | <ul style="list-style-type: none"> • Data Collection • Design Review and Condition Survey • Survey and Investigations • Structures Design • Public health design • Electrical and Electification Design • Detailed Design and Drawings • Bidding Documents • Cost Estimates, Specifications |
| 138 | PUNJAB SCHOOL AT SHAHDRA | G.T. ROAD SHAHDRA | M/S FAKHAR-UD-DIN | MULTI STORY BUILDING | Dec-21 | Dec-21 | 36 | 0.414 | <ul style="list-style-type: none"> • Data Collection • Design Review and Condition Survey • Survey and Investigations • Structures Design • Public health design • Electrical and Electification Design • Detailed Design and Drawings • Bidding Documents • Cost Estimates, Specifications |
| 139 | HOSTEL AT INTELOOP HD 3 MAGA RAIWIND ROAD LAHORE | RAIWIND ROAD LAHORE | INTERLOOP LIMITED | MULTI STORY AND INDUSTRIAL BUILDING | Apr-21 | May-21 | 25 | 0.2875 | <ul style="list-style-type: none"> • Data Collection • Design Review and Condition Survey • Survey and Investigations • Structures Design • Public health design • Electrical and Electification Design • Detailed Design and Drawings • Bidding Documents • Cost Estimates, Specifications |
| 140 | BIRGD ZULFIQAR MAIN CANAL ROAD, LAHORE | MAIN CANAL ROAD, LAHORE | BRIDADIER ZULFIQAR | MULTI STORY AND INDUSTRIAL BUILDING | May-21 | Jun-21 | 75 | 0.8625 | <ul style="list-style-type: none"> • Data Collection • Design Review and Condition Survey • Survey and Investigations |

General Experience by Providing the List of Projects/Assignments Performed in the Past 06 Years

| Sr. No. | Name of Project | Location | Client | Project Description | Implementation | | Total Cost of Project (Rs million) | Cost of Consultancy Services provided by the Firm | Actual Services Provided by the Consultant |
|---------|---|-----------------------|------------------------|---|----------------|------------|------------------------------------|---|--|
| | | | | | Start | Completion | | | |
| | | | | | | | | | <ul style="list-style-type: none"> • Structures Design • Public health design • Electrical and Electification Design • Detailed Design and Drawings • Bidding Documents • Cost Estimates, Specifications |
| 141 | OHWT AT JAUHARABAD | JAUHARABAD | M/S SHALIMAR CONST. CO | CONSTRUCTION OF 10000 GALLONS OHR AT GOVERNMENT PLY TECHNIQUE INSTITUTE, HAUHARABAD | May-14 | Jun-14 | 36 | 0.414 | <ul style="list-style-type: none"> • Data Collection • Design Review and Condition Survey • Survey and Investigations • Structures Design • Public health design • Electrical and Electification Design • Detailed Design and Drawings • Bidding Documents • Cost Estimates, Specifications |
| 142 | GYMNASIUM AT CHICHAWATNI SAHIWAL | CHICHAWATNI SAHIWAL | SPORTS BOARD PUNJAB | MULTI STORY BUILDING | May-21 | Jun-21 | 45 | 0.5175 | <ul style="list-style-type: none"> • Data Collection • Design Review and Condition Survey • Survey and Investigations • Structures Design • Public health design • Electrical and Electification Design • Detailed Design and Drawings • Bidding Documents • Cost Estimates, Specifications |
| 143 | WHRB MS SHED AT INTELOOP HD 3 MANGA RAIWIND ROAD LAHORE | MANGA RAIWIND LAHORE. | INTERLOOP LIMITED | STEEL SHED OF BOLER AREA BUILDING | Jun-21 | Jul-21 | 7.5 | 0.08625 | <ul style="list-style-type: none"> • Data Collection • Design Review and Condition Survey • Survey and Investigations • Structures Design • Public health design • Electrical and Electification Design • Detailed Design and Drawings • Bidding Documents • Cost Estimates, Specifications |
| 144 | SPORTS COMPLEX AT KABIRWALA | KABIRWALA | PUNJAB SPORT BOARD | MULTI STORY BUILDING | Jun-21 | Jul-21 | 75 | 0.8625 | <ul style="list-style-type: none"> • Data Collection • Design Review and Condition Survey |

General Experience by Providing the List of Projects/Assignments Performed in the Past 06 Years

| Sr. No. | Name of Project | Location | Client | Project Description | Implementation | | Total Cost of Project (Rs million) | Cost of Consultancy Services provided by the Firm | Actual Services Provided by the Consultant |
|---------|--|--------------------------|------------------------------|-------------------------------------|----------------|--------------|------------------------------------|---|--|
| | | | | | Start | Completion | | | |
| | | | | | | | | | <ul style="list-style-type: none"> • Survey and Investigations • Structures Design • Public health design • Electrical and Electification Design • Detailed Design and Drawings • Bidding Documents • Cost Estimates, Specifications |
| 145 | NEW ACADEMY OF ENGG IRRIGATION DEPARTMENT PUNJAB | RAMKOT LAHORE. | PUNJAB IRRIGATION DEPARTMENT | MULTI STORY BUILDING | Sep-21 | Oct-21 | 750 | 8.625 | <ul style="list-style-type: none"> • Data Collection • Design Review and Condition Survey • Survey and Investigations • Structures Design • Public health design • Electrical and Electification Design • Detailed Design and Drawings • Bidding Documents • Cost Estimates, Specifications |
| 146 | HOSPITAL BUILDING FOR MR.WAQAR-UL-HASSAN AT PHALIA | PHALIA, MANDI BAHAUD DIN | MR. WAQAR-UL-HASSAN | MULTI STORY BUILDING / HOSPITAL | Jun-21 | Jul-21 | 25 | 0.2875 | <ul style="list-style-type: none"> • Data Collection • Design Review and Condition Survey • Survey and Investigations • Structures Design • Public health design • Electrical and Electification Design • Detailed Design and Drawings • Bidding Documents • Cost Estimates, Specifications |
| 147 | ALKHIDMAT SCHOOL FOR PECO ROAD, LAHORE | KOT LAKHPAT LAHORE. | MUHAMMAD IQBAL | MULTI STORY BUILDING | Jun-21 | Jul-21 | 7.5 | 0.08625 | <ul style="list-style-type: none"> • Data Collection • Design Review and Condition Survey • Survey and Investigations • Structures Design • Public health design • Electrical and Electification Design • Detailed Design and Drawings • Bidding Documents • Cost Estimates, Specifications |
| 148 | CANTEEN AT INTELOOP | MANGA | INTERLOOP | MULTI STORY AND INDUSTRIAL BUILDING | Jul-21 | AUGUST, 2021 | 6.5 | 0.07475 | <ul style="list-style-type: none"> • Data Collection |

General Experience by Providing the List of Projects/Assignments Performed in the Past 06 Years

| Sr. No. | Name of Project | Location | Client | Project Description | Implementation | | Total Cost of Project (Rs million) | Cost of Consultancy Services provided by the Firm | Actual Services Provided by the Consultant |
|---------|--|------------------------|-------------------------|---------------------------------|----------------|--------------|------------------------------------|---|--|
| | | | | | Start | Completion | | | |
| | HD 3 MANGA RAIWIND ROAD LAHORE | RAIWIND LAHORE. | LIMITED | | | | | | <ul style="list-style-type: none"> • Design Review and Condition Survey • Survey and Investigations • Structures Design • Public health design • Electrical and Electification Design • Detailed Design and Drawings • Bidding Documents • Cost Estimates, Specifications |
| 149 | PUNJAB SCHOOL FOR MR MOBEEN SHAFAT AT JIA BAGGA LAHORE | JIA BAGGA LAHORE | MR. MUBEEN SHAFAT | MULTI SCHOOL BUILDING | Jul-21 | AUGUST, 2021 | 100 | 1.15 | <ul style="list-style-type: none"> • Data Collection • Design Review and Condition Survey • Survey and Investigations • Structures Design • Public health design • Electrical and Electification Design • Detailed Design and Drawings • Bidding Documents • Cost Estimates, Specifications |
| 150 | GHAZALI EDUCATION TRUST MALIK GHULAM NABI CAMPUS | SHEROKAY, SHEIKHUPUR A | GHAZALI EDUCATION TRUST | MULTI STORY/ SCHOOL BUILDING | Sep-21 | Oct-21 | 50 | 0.575 | <ul style="list-style-type: none"> • Data Collection • Design Review and Condition Survey • Survey and Investigations • Structures Design • Public health design • Electrical and Electification Design • Detailed Design and Drawings • Bidding Documents • Cost Estimates, Specifications |
| 151 | ETP FOR HAFIZ TENNEY AT GAJUMATTA LAHORE | GAJUMATTA LAHORE | HAFIZ TANNERY | MULTI STORY / HOSPITAL BUILDING | Sep-21 | Oct-21 | 25 | 0.2875 | <ul style="list-style-type: none"> • Data Collection • Design Review and Condition Survey • Survey and Investigations • Structures Design • Public health design • Electrical and Electification Design • Detailed Design and Drawings • Bidding Documents • Cost Estimates, Specifications |

General Experience by Providing the List of Projects/Assignments Performed in the Past 06 Years

| Sr. No. | Name of Project | Location | Client | Project Description | Implementation | | Total Cost of Project (Rs million) | Cost of Consultancy Services provided by the Firm | Actual Services Provided by the Consultant |
|---------|--|-----------------------|--------------------------------|-------------------------------------|----------------|------------|------------------------------------|---|--|
| | | | | | Start | Completion | | | |
| 152 | TAYYABA MASJID LAHORE | WALTON ROAD LAHORE. | AL-KHIDMAT FOUNDATION PAKISTAN | MULTI STORY AND INDUSTRIAL BUILDING | Sep-21 | Oct-21 | 35 | 0.4025 | <ul style="list-style-type: none"> • Data Collection • Design Review and Condition Survey • Survey and Investigations • Structures Design • Public health design • Electrical and Electification Design • Detailed Design and Drawings • Bidding Documents • Cost Estimates, Specifications |
| 153 | REHABILATION OF PUNJAB STADIUM LAHORE | PUNJAB STADIUM LAHORE | SPORTS BOARD PUNJAB | MULTI STORY / SPORTS BUILDING | Nov-21 | Dec-21 | 40 | 0.46 | <ul style="list-style-type: none"> • Data Collection • Design Review and Condition Survey • Survey and Investigations • Structures Design • Public health design • Electrical and Electification Design • Detailed Design and Drawings • Bidding Documents • Cost Estimates, Specifications |
| 154 | LITIGANTS FACILITATION COMPLEX ISLAMABAD | ISLAMABAD | | MULTI STORY AND INDUSTRIAL BUILDING | Nov-21 | Dec-21 | 45 | 0.5175 | <ul style="list-style-type: none"> • Data Collection • Design Review and Condition Survey • Survey and Investigations • Structures Design • Public health design • Electrical and Electification Design • Detailed Design and Drawings • Bidding Documents • Cost Estimates, Specifications |
| 155 | ALKHIDMAT HOSPITAL BUILDING AT UPPER DIR | UPPER DIR | | MULTI STORY AND INDUSTRIAL BUILDING | Nov-21 | Dec-21 | 65 | 0.7475 | <ul style="list-style-type: none"> • Data Collection • Design Review and Condition Survey • Survey and Investigations • Structures Design • Public health design • Electrical and Electification Design • Detailed Design and Drawings • Bidding Documents |

General Experience by Providing the List of Projects/Assignments Performed in the Past 06 Years

| Sr. No. | Name of Project | Location | Client | Project Description | Implementation | | Total Cost of Project (Rs million) | Cost of Consultancy Services provided by the Firm | Actual Services Provided by the Consultant |
|---------|------------------------------------|----------|--------|-------------------------------------|----------------|------------|------------------------------------|---|--|
| | | | | | Start | Completion | | | |
| | | | | | | | | | <ul style="list-style-type: none"> • Cost Estimates, Specifications |
| 156 | PARWAIZ ASSOCIATE CENTRAL PARK | | | MULTI STORY AND INDUSTRIAL BUILDING | Nov-21 | Dec-21 | 25 | 0.2875 | <ul style="list-style-type: none"> • Data Collection • Design Review and Condition Survey • Survey and Investigations • Structures Design • Public health design • Electrical and Electification Design • Detailed Design and Drawings • Bidding Documents • Cost Estimates, Specifications |
| 157 | MIAN KHALID ASSOCIATE CENTRAL PARK | | | MULTI STORY AND INDUSTRIAL BUILDING | Nov-21 | Dec-21 | 7 | 0.0805 | <ul style="list-style-type: none"> • Data Collection • Design Review and Condition Survey • Survey and Investigations • Structures Design • Public health design • Electrical and Electification Design • Detailed Design and Drawings • Bidding Documents • Cost Estimates, Specifications |
| 158 | MPP AREA AT PHARMAGEN | | | MULTI STORY AND INDUSTRIAL BUILDING | Jan 21 | Feb 21 | 140 | 1.61 | <ul style="list-style-type: none"> • Data Collection • Design Review and Condition Survey • Survey and Investigations • Structures Design • Public health design • Electrical and Electification Design • Detailed Design and Drawings • Bidding Documents • Cost Estimates, Specifications |
| 159 | AVCA BUILDING AT PHARMAGEN | | | MULTI STORY AND INDUSTRIAL BUILDING | Jan 22 | Feb 22 | 70 | 0.805 | <ul style="list-style-type: none"> • Data Collection • Design Review and Condition Survey • Survey and Investigations • Structures Design • Public health design • Electrical and Electification Design • Detailed Design and Drawings • Bidding Documents • Cost Estimates, Specifications |

General Experience by Providing the List of Projects/Assignments Performed in the Past 06 Years

| Sr. No. | Name of Project | Location | Client | Project Description | Implementation | | Total Cost of Project (Rs million) | Cost of Consultancy Services provided by the Firm | Actual Services Provided by the Consultant |
|---------|--------------------------------------|----------|--------|-------------------------------------|----------------|------------|------------------------------------|---|--|
| | | | | | Start | Completion | | | |
| 160 | ETP FOR ADAM DARIES AT SAHIWAL | SAHIWAL | | MULTI STORY AND INDUSTRIAL BUILDING | Feb 22 | March 22 | 50 | 0.575 | <ul style="list-style-type: none"> • Data Collection • Design Review and Condition Survey • Survey and Investigations • Structures Design • Public health design • Electrical and Electification Design • Detailed Design and Drawings • Bidding Documents • Cost Estimates, Specifications |
| 161 | GRID STATION INTERLOOP | | | MULTI STORY AND INDUSTRIAL BUILDING | Feb 22 | March 22 | 144 | 1.656 | <ul style="list-style-type: none"> • Data Collection • Design Review and Condition Survey • Survey and Investigations • Structures Design • Public health design • Electrical and Electification Design • Detailed Design and Drawings • Bidding Documents • Cost Estimates, Specifications |
| 162 | COMMERCIAL BUILDING PARK VIEW LAHORE | LAHORE | | MULTI STORY AND INDUSTRIAL BUILDING | Feb 22 | March 22 | 75 | 0.8625 | <ul style="list-style-type: none"> • Data Collection • Design Review and Condition Survey • Survey and Investigations • Structures Design • Public health design • Electrical and Electification Design • Detailed Design and Drawings • Bidding Documents • Cost Estimates, Specifications |
| 163 | ORPHEN HOME BHERA | | | MULTI STORY AND INDUSTRIAL BUILDING | Feb 22 | March 22 | 149 | 1.7135 | <ul style="list-style-type: none"> • Data Collection • Design Review and Condition Survey • Survey and Investigations • Structures Design • Public health design • Electrical and Electification Design • Detailed Design and Drawings • Bidding Documents • Cost Estimates, Specifications |



Annex-C
SELECTED CUSTOMER'S TESTIMONIAL



OFFICE OF THE EXECUTIVE ENGINEER
LAHORE DIVISION C.B.D.C.LAHORE.
OPPOSITE ROYAL PALM GOLF CLUB
CANAL BANK DHARAMPURA LAHORE
Phone # 042/99250194 & Fax # 042/99250263
No 1722/1-A dt. 17.12.22

TO WHOM IT MAY CONCERN

It is certified that M/s hike Engineering Consultants working as short term consultancy for the work "Construction of New Campus of Government Engineering Academy Punjab (GEAP) Lahore". During the course of execution of the said work the quality of work / performance and behavior of the firm is satisfactory. The firm is technically source full capable to handing the challenging works.

[Signature]
17/12/22
Sub-Divisional Officer
Bata Pur Sub Division
LAHORE.

It is certified that Structural Design of Takbeer Tower a Multi Storey Commercial Building comprising of two level basements, Lower Ground, Ground plus Eight Storeys has been done by M/S HIKE ENGINEERING CONSULTANTS. The building is located on Mcleod Road Lahore and covered area is about 185000 sft.

1-Chief Coordinator Sheikh Farooq Ahmed

Chief Engineer(retd)

2-Architectural Design by TECH ZONE ENGINEERING CONSULTANTS.

3- Structural Design by HIKE ENGINEERING CONSULTANTS

4-Electrical Design by WATTS ENGINEERING SERVICES

5-Plumbing Design by SOHAIL AHMED ASSOCIATES.

Managing Director





THE PUNJAB SCHOOL

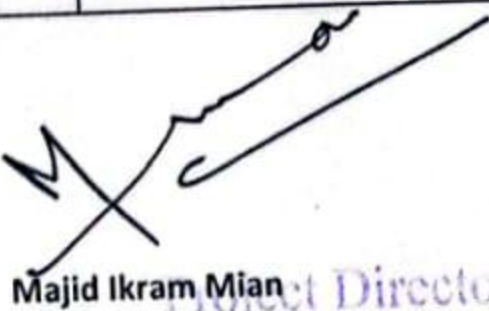


دی پنجاب سکول

Ref. No: TPS-KJ-Admin
Date: 15-11-2022

It is being certified that Engineering Design of following project has been carried out by M/s Hike Engineering Consultants, (with status shown in Remarks) we are satisfy with their performance in design and drawing work with in-time completion.

| Sr | Project Description | Plot Size | Plot Area (SFT) | No of Stories | Total Covered Area (SFT) | Remarks |
|----|--|-----------|-----------------|---------------|--------------------------|-----------|
| 1 | The Punjab School System, Wapda Town Campus, Lahore. | | 123,061 | | | Completed |
| | A Admin Block | | | 4 | 10,569 | |
| | B Pre-School | | | 5 | 34,553 | |
| | C Girls Block | | | 5 | 43,436 | |
| | D Boys Block | | | 3 | 63,983 | |
| | E Waiting Area & Guard Room | | | 1 | 1,326 | |
| | F Total | | | | | |
| 2 | The Punjab School System, Kyayaban-e-Jannah, Campus, Lahore. | | 234,200 | | | In-Hand |
| | A Pre-School | | | 4 | 57,992 | |
| | B Admin Block | | | 4 | 10,023 | |
| | C Girls Block/Wing | | | 4 | 47,912 | |
| | D Boys Block/Wing | | | 4 | 49,188 | |
| | E Junior Block/Wing | | | 4 | 55,280 | |
| | F Teaching Staff | | | 4 | 46,538 | |
| | G Squash Court | | | 2 | 3,295 | |
| | H Swimming Pool | | | 1 | 15,346 | |
| | I Supporting Staff Residences | | | 4 | 7,500 | |
| | J Total | | | | | |


Majid Ikram Mian

Project Director
The Punjab School



الخدمت فاؤنڈیشن پاکستان
ALKHIDMAT FOUNDATION PAKISTAN

Alkhidmat Complex
3-km, Khayaban-e-Jinnah
Lahore - Pakistan

T: +92 42 3522 8924
T: +92 42 3595 7260
F: +92 42 3595 7261
info@alkhidmat.org
www.alkhidmat.org

Ref: _____

Date: 15-11-2022

We certify that Engineering Design of following project has been carried out by M/s Hike Engineering Consultants, we are satisfying with their performance in design and drawing work with in-time completion.

| Alkhidmat Foundation, Pakistan | | | | | | | |
|--------------------------------|------------|---|-------------------|-----------------|---------------|--------------------------|-------------|
| Sr.# | Project ID | Project Description | Plot Size (Kanal) | Plot Area (SFT) | No of Stories | Total Covered Area (SFT) | Status |
| 1 | 1761 | Aghosh Alkhidmat Bhera (Fatima Zahra campus) Boys Hostel at Bhalwal Road. | 10 | | 3 | 38,452 | Completed |
| 2 | 1749 | Alkhidmat Hameeda Mumtaz Hospital at Upper Dir kumrat road Chakyatan. | 1.15 | | 3 | 16,180 | Completed |
| 3 | 1684-137 | Aghosh Alkhidmat DI Khan near Gomal university. | 10 | 53,075 | 5 | 56,502 | Completed |
| 4 | 1677 | Alkhidmat Afzal Nawaz Hospital Gujrat near chur chak village. | 9 | 55,245 | 2 | 20,447 | Completed |
| 5 | 1665 | Aghosh Alkhidmat Gilgit Boys Hostel at Konodas Gilgit near Gulsher Colony. | 15 | | 4 | 34,217 | Completed |
| 6 | 1611 | Learning Resource Centre for Aghosh Alkhidmat Murree at Murree Expressway. | 54 | 242,646 | 5 | 18,155 | Completed |
| 7 | 1440 | Alkhidmat Charity Australia Hospital at Hamidpur southern bypass road Multan. | | 139,474 | 5 | 87,683 | Completed |
| 8 | 1471 | Aghosh Alkhidmat Sheikhpura at 13km Sharaqpur Road, Sheikhpura. | 132 | | | | Completed |
| " | A | Girls Hostel | | | 3 | 74,556 | |
| " | B | High School | | | 3 | 62,144 | |
| " | C | Masjid | | | 1 | 3,202 | |
| " | D | Total | | | | 139,902 | |
| 9 | 1292 | Alkhidmat Foundation Complex at 3km Khayaban-e-Jinnah Road, Lahore. | | 27,743 | 3 | 39,236 | Completed |
| 10 | 1769 | Alkhidmat Jamia Darul Uloom, Multan. | | | 7 | 41,978 | In Progress |
| 11 | 1768 | Alkhidmat Hospital Vehari. | 03 | | 3 | 34,436 | In Progress |

Khubaib Bilal
Executive Director
Alkhidmat Foundation Pakistan

Donations Exempted From Income Tax

TO WHOM IT MAY CONCERN

COMPLETION CERTIFICATE

We certify that Engineering Design of the projects as mention in the attached list has been carried out by M/s Hike Engineering Consultants,, we are satisfy with their performance in design and drawing work with in-time completion.

MASS CONSULTANTS
~~ARCHITECT~~ ENGINEER
WALTON ROAD, LAHORE.

Afshan Riaz

Principal Architect

Mass Consultants

Ref:- _____

Date:- 17-11-2022

List of Completed Project

| Sr | Id | Project Description | Plot Size | Plot Area (SFT) | No of Stories | Total Covered Area (SFT) |
|----|------|--|-----------|-----------------|---------------|--------------------------|
| 1 | 1670 | Multi-Storied Apartment Building for Mr Azam & Mr Farieed at 38-Tariq-Block, New Garden Town, Lahore | 83'X123' | 10159 | 14 | 75,708 |
| 2 | 1640 | Agriculture Warehouse at Khasra # 467/1 456/ 467/2 Moza Nain Sukh Tehsil City Zilah Lahore. | 95'X150' | 18810 | 3 | 27,244 |
| 3 | 1624 | Commercial Building owned by Mr. Nazar Makhdoom Rajput at 336, G-3, Johar Town Lahore. | | 4544 | 5 | 13,126 |
| 4 | 1616 | Plaza for Mst. Rafia Nawaz at 17 Civic Center Lahore | | 2333 | 5 | 15,748 |
| 5 | 1586 | Commercial Building For Mr. Ahsan Shamim At Plot No. 183, Air Lines Housing, Scheme Lahore. | 34'X65' | | 6+MUMTY | 41,920 |
| 6 | 1586 | Commercial Building For Mr. Ahsan Shamim At Plot No. 183, Air Lines Housing, Scheme Lahore. | 34'X65' | 2251 | 6+MUMTY | 10,204 |
| 7 | 1576 | Commercial Building for Sheranwala Group at plot # 111 Wapda Town, Lhr. | | 4410 | 2+MUMTY | 5,777 |
| 8 | 1575 | PLAZA FOR Mr BABAR RASHEED & RIAZ AHMAD AT PLOT # 605-H3 JOHAR TOWN, LHR | 40'X113' | 4524 | 5 | 13,607 |
| 9 | 1571 | COMMERCIAL BUILDING FOR MIAN ASHRAF ALI AT PLOT # 21-P, JOHAR TOWN, Lhr | 40'X115' | | 5 | 9,854 |
| 10 | 1564 | Marquee For Mian Muhammad Tahir at Mouza Kanjran Lahore. | | 41250 | 1 | 2,996 |
| 11 | 1525 | Const of different units for Zamin City Housing Society, Ferozepur Road, Lhr MASJID | | 18062 | 3 | 24,966 |
| 12 | 1521 | Cardic Hospital at Plot 67 Trade Center, Johar Town Lahore | 169'X161' | 27000 | 9 | 186,446 |
| 13 | 1498 | CENTRAL PARK UNIVERSITY, LAHORE | | | | 184,976 |
| 14 | 1459 | Central Park Medical Collage, Lahore. | | 1693 | 4 | 72,276 |

MEDITATIVE ARCHITECTURAL SERVICES

FIRST FLOOR BUSINESS ARCADE WALTON ROAD LAHORE CANTT.
TEL 042-6662930 FAX: 6688425 Email : mass_consultants@yahoo.com


MASS CONSULTANTS
Architect Engineer
Walton Road Lahore.

Date:- 17-11-2022

List of Completed Project

| Sr | Id | Project Description | Plot Size | Plot Area (SFT) | No of Stories | Total Covered Area (SFT) |
|----|------|---|-----------|-----------------|---------------|--------------------------|
| 15 | 1458 | Different Units for Queen Medical College, Ferozepur Road, Lahore including Medical College, Boys/Girls | 295'X154' | | 5 | 113,910 |
| 16 | 1454 | Concept Lab for VI Sigma at Raiwind Road, Lahore. | 240'X182' | | 4 | 52,162 |
| 17 | 1429 | Naveed Plaza at Johar Town, Lahore | | 19169 | 3 | 38,512 |
| 18 | 1420 | Shah Jamal Plaza | | 22171 | 7+MUM TY | 25,872 |
| 19 | 1403 | Construction of Bright Day Trust School, Lahore | 183'X240' | 43920 | 3+MUM TY | 53,455 |
| 20 | 1399 | New Head Office Building for VI Sigma at Raiwind Road, Lahore. | | 11674 | 3+MUM TY | 35,188 |
| 21 | 1390 | Different Units for CMH Medical Complex CMH Kharian including Medical College, Boys/Girls Hostels, Cafeteria etc. | | | | 146,541 |
| 22 | 1376 | Plaza for Zafar Catering at Kareem Block, Iqbal Town, Lahore. | | | | 5,566 |
| 23 | 1366 | Naveed Plaza, Johar Town, Lahore | | | | 81,903 |
| 24 | 1344 | Zarrina Academy at G-14 Islamabad | | | | 26,466 |
| 25 | 1330 | Sheranwala Apartment, Izmir Town, Canal Road, Lahore | | | | 1,562,390 |
| 26 | 1322 | Mr. Imran Salah ud Din, Johar Town, Lahore. | | | | 37,238 |
| 27 | 1390 | Different Units for CMH Medical Complex CMH Multan including Medical College, Boys/Girls Hostels, Cafeteria etc. | | | | 62,290 |
| 28 | 1300 | Plaza at Plot # A-3/12, A-3/13, Valancia, Lahore | | | | 82,390 |

Ref:- _____

Date:- 17-11-2022

| List of Completed Project | | | | | | |
|---------------------------|------|---|-----------|-----------------|---------------|--------------------------|
| Sr | Id | Project Description | Plot Size | Plot Area (SFT) | No of Stories | Total Covered Area (SFT) |
| 29 | 1252 | Event Complex, Islamabad. | | | | 19,235 |
| 30 | 1246 | Plaza building at Plot # 419,420 PIA Road, Lahore | | | | 13,864 |
| 31 | 1242 | SKS Mall, Lahore | | | | 177,840 |


MASS CONSULTANTS
ARCHITECT ENGINEER
WALTON ROAD, LAHORE.

TO WHOM IT MAY CONCERN

It is certified that M/s Hike Engineering has provided us Structural design services for our residential and commercial projects at Central Park Housing Scheme, Ferozpur Road, Lahore.

The structural design services are satisfactory and the list of the projects is herein enclosed from Annexure 1 to 5. ✍


17/11/2022
Abdul Mansoor
Head of Architecture & Planning

**Sr. Manager Architecture
& Planning
Urban Developers**



📍 IT Tower, Urban Developers, Executive Floor,
Management Office, 73-E/1, Gulberg III,
Hali Road, Lahore, Pakistan.
UAN: (042) 111 109 111

📍 Central Park office
Block G, 31 KM, Main Ferozpur
Road Lahore, Pakistan
UAN: (042) 111 109 109





**URBAN
DEVELOPERS**
Chartered Town Planners

Page 1

| Sr | Project Description | Plot Size | Plot Area (SFT) | No of Stories | Total Covered Area (SFT) |
|----|--|-----------|-----------------|---------------|--------------------------|
| 1 | Res for Mrs. Farwa Bukhari, Plot # 1113-C | 20'x45' | 900 | 3 | 2,208 |
| 2 | Jamia Masjid, J-Block. | | 4752 | 3 | 4,186 |
| 3 | Res for Mrs. Ume Kalsoom, Plot # 970-D | 35'x65' | 2275 | 3 | 5,028 |
| 4 | Res for Mrs. Gazala Naveed, Plot # 931-F | 35'x70' | 2450 | 3 | 3,151 |
| 5 | Res for Mr Hussnain Ali Shah, Plot # 226-B | 50'x90' | 4500 | 4 | 5,626 |
| 6 | Res for Mr. Syed Tanveer Hussain Naqvi, Plot # 0345-A | 50'x90' | 4500 | 3 | 5,038 |
| 7 | Res for Mrs. Aisha Ishaq, Plot # 1052-G | 50'x90' | 4500 | 3 | 4,536 |
| 8 | Res for Mr. Khalid Iftikhar ul Haq, Plot # 1211-C | 17.5'x45' | 787.5 | 3 | 1,402 |
| 9 | Res for Mr. Khadim Hussain, Plot # 535-B | 20'x45' | 900 | 3 | 1,634 |
| 10 | Res for Mrs. Shazia Parveen, Plot # 415-B | 50'x90' | 4500 | 2 | 4,569 |
| 11 | Res for Mr. Hafiz Muhammad Sahbash Khan, Plot # 116-A1 | 25'x45' | 1125 | 4 | 2,740 |
| 12 | Res for Mrs. Sumera Abid, Plot # 55-C | 50'x90' | 4500 | 3 | 5,309 |
| 13 | RES FOR MR.TARIQ MAHMOOD KUNDI 0579-F | 35'x65' | 2275 | 3 | 3,047 |
| 14 | RES FOR Mrs. SOBIA MANSOOR AKBAR 0107-C | 50'x90' | 4500 | 3 | 5,362 |
| 15 | RES FOR Mr RASHID JALAL-370-D | 35'x65' | 2275 | 3 | 3,047 |
| 16 | RES FOR MISS ADEELA AMANAT -0478-E | 25'x45' | 1125 | 3 | 2,187 |



IT Tower, Urban Developers, Executive Floor,
Management Office, 73-E/1, Gulberg III,
Hali Road, Lahore, Pakistan.
UAN: (042) 111 109 111

Central Park office
Block G, 31KM, Main Ferozpur
Road Lahore, Pakistan
UAN: (042) 111 109 109



info@urbandevelopersgroup.com
www.urbandevelopersgroup.com



| Sr | Project Description | Plot Size | Plot Area (SFT) | No of Stories | Total Covered Area (SFT) |
|----|--|------------|-----------------|---------------|--------------------------|
| 17 | RES FOR Mr IMRAN ALI -1317-A1 | 25'x45' | 1125 | 3 | 2,086 |
| 18 | RES FOR Mr.ASHAQ ALI BHATTI-0419,A | 50'x90' | 4500 | 3 | 5,144 |
| 19 | MASJID AT C BLOCK | | 3431 | 2 | 3582 |
| 20 | CAR PARKING SHED | 52'-6"X66' | | 1 | 3,465 |
| 21 | COMM BUILDING AT PLOT 10/11 D, AREA: 20259 SFT, RATE: 7/- | 60'x60' | 3600 | 7 | 24,948 |
| 22 | RES FOR MR. MUHAMMAD NAWAZ AT PLOT # 13311-C | 17.5'x45' | 787.5 | 3 | 1,861 |
| 23 | RES FOR Mrs. FAZEELA SARFRAZ AT PLOT # 0047, C | 50'x90' | 4500 | 3 | 5,206 |
| 24 | RES FOR Mr. SHAKEEB ABRAR PLOT NO 0453, E | 25'x45' | 1125 | 3 | 2,167 |
| 25 | RES FOR Mr. MUHAMMAD UMMAR FAROOQ MALIK PLOT NO 626, G | 35'x65' | 2275 | 3 | 3,152 |
| 26 | RES FOR Mr. MUHAMMAD SULTAN FAREED AT PLOT # 0583-E, | 25'x45' | 1125 | 3 | 1,928 |
| 27 | RES FOR Mrs. RIFFAT RASHID CH. AT PLOT # 0645, BLOCKA, | 35'x65' | 2275 | 3 | 3,046 |
| 28 | COMM BUILDING AT PLOT 42-B | 30'x60' | 1800 | 5 | 8,640 |
| 29 | RES FOR Mrs. RUBINA JAVAD AT PLOT # 1032, BLOCKD | 35'x65' | 2275 | 4 | 5,030 |
| 30 | RES FOR Mr. MUHAMMAD ASHFAQ BHATTI AT PLOT # 0111, BLOCKC, | 50'x90' | 4500 | 3 | 5,331 |
| 31 | RES FOR Mrs. AMMARA IJAZ AT PLOT # 0140, BLOCKA, | 50'x90' | 4500 | 3 | 5,226 |
| 32 | RES FOR Mr. GHULAM BARI AT PLOT # 0238-E | 25'x45' | 1125 | 4 | 2,491 |
| 33 | COMMERCIAL BULDING AT PLOT NO 0051-B | 30'x60' | 1800 | 7 | 9,329 |
| 34 | COMMERCIAL BULDING AT PLOT NO 0096-1-B | 23'x40' | 920 | 4 | 2,275 |



IT Tower, Urban Developers, Executive Floor,
Management Office, 73-E/1, Gulberg III,
Hali Road, Lahore, Pakistan.
UAN (042) 111 109 111

Central Park office
Block G, 31 KM, Main Ferozepur
Road Lahore, Pakistan
UAN (042) 111 109 109





| Sr | Project Description | Plot Size | Plot Area (SFT) | No of Stories | Total Covered Area (SFT) |
|----|--|-----------|-----------------|---------------|--------------------------|
| 35 | RES FOR DUPLEX TOWN HOUSE | 50'x45' | 2250 | 4 | 5,092 |
| 36 | RES FOR Mr. ISRAR AHMAD AT PLOT # 0327-A1 | 25'x45' | 1125 | 4 | 2,491 |
| 37 | COMMERCIAL BUILDING FOR MR. KHALID AT PLOT 12-B. | 30'x60' | 1800 | 3 | 5,400 |
| 38 | DUPLEXHOUSES AT PLOT NO. 640-641 | 50'x45' | 2250 | 4 | 5,092 |
| 39 | COMMERCIAL BULDING AT PLOT NO 239 | 30'x60' | 1800 | 7 | 8,647 |
| 40 | RES, FOR MR.AMIR ALI KHAN AT PLOT NO. 1121 BLOCK C | 25'x45' | 1125 | 3 | 1,901 |
| 41 | RES. FOR Mr.MUHAMMAD FARHAN AT PLOT NO. 0099,BLOCK AA | 25'x45' | 1125 | 3 | 2,103 |
| 42 | RES, FOR MR.MUHAMMAD ASIF AT PLOT NO.0417 BLOCK A | 50'x90' | 4500 | 3 | 5,252 |
| 43 | RES, FOR MR.MUHAMMAD ARIF HUSSAIN AT PLOT NO. 74 BLOCK B | 50'x90' | 4500 | 3 | 5,363 |
| 44 | RES, FOR MR. MUNEEB SHAHID AT PLOT NO. 0075 BLOCK A1 | 25'x45' | 1125 | 2 | 2,027 |
| 45 | RES, FOR MR.TARIQ AKRAM AT PLOT NO. 0127 BLOCK E | 25'x45' | 1125 | 3 | 1,861 |
| 46 | RES FOR PLOT NO. 0052 | 25'x45' | 1125 | 4 | 3,025 |
| 47 | RES FOR Mr. MUHAMMAD EJAZ AT PLOT # 0650-E, | 25'x45' | 1125 | 3 | 2,380 |
| 48 | RES FOR Mr. KHADIM HUSSAIN 0063 BLOCKA1 | 25'x45' | 1125 | 4 | 2,813 |
| 49 | RES FOR Mr. MUHAMMAD IMRAN KHAN AT PLOT # 0052-1-A1, | 25'x45' | 1125 | 3 | 1,909 |
| 50 | RES FOR Mr. MUHAMMAD BILAL AT PLOT # 0005-A1 | 25'x45' | 1125 | 4 | 2,815 |
| 51 | RES FOR Mr. MUHAMMAD YASIR RIZWAN ARSHAD PLOT # 0117-E | 25'x45' | 1125 | 3 | 2,377 |
| 52 | RES FOR Mr.MUHAMMAD SALEEM PLOT # 0455-A1 | 25'x45' | 1125 | 4 | 2,815 |



IT Tower, Urban Developers, Executive Floor,
Management Office,73-E/1, Gulberg III,
Hali Road, Lahore, Pakistan.
UAN: (042) 111 109 111

Central Park office
Block G, 31KM, Main Ferozepur
Road Lahore, Pakistan
UAN: (042) 111 109 109



info@urbandedvelopersgroup.com
www.urbandedvelopersgroup.com



**URBAN
DEVELOPERS**
Chartered Town Planners

Page 4

| Sr | Project Description | Plot Size | Plot Area (SFT) | No of Stories | Total Covered Area (SFT) |
|----|--|-----------|-----------------|---------------|--------------------------|
| 53 | RES FOR Mr.SHAHBAZ AHMAD PLOT # 0678-C | 35'x65' | 2275 | 3 | 3,117 |
| 54 | MOSQUE AT R.A BAZAR, POLICE STATION,LAHORE | | 2299 | 1 | 2,299 |
| 55 | RES FOR MRS. RAZIA PARVEEN PLOT # 0038-AA | 25'x45' | 1125 | 3 | 2,059 |
| 56 | RES FOR Mr. ZEESHAN-UL-HAQ PLOT # 1199-C | 20'x45' | 900 | 3 | 1,614 |
| 57 | RES FOR MR.SHABIR AHMAD PLOT # 0793-C | 35'x65' | 2275 | 4 | 3,702 |
| 58 | RES FOR Mrs. QUDSIA NAFEEES PLOT # 0180-E | 25'x45' | 1125 | 4 | 2,815 |
| 59 | FOR RES MR. HASNAT AHMED PLOT # 0012-AA | 25'x45' | 1125 | 3 | 2,146 |
| 60 | RES Mr. MUHAMMAD ASGHAR PLOT # 0274-E | 25'x45' | 1125 | 3 | 1,943 |
| 61 | FOR RES Mr. TAUSEEF AHMAD PLOT # 0509-E | 25'x45' | 1125 | 2 | 1,276 |
| 62 | FOR RES Mrs. ZOYA NAVEED PLOT # 1296-C | 20'x45' | 900 | 4 | 2,015 |
| 63 | RES Mr. ZEESHAN AHMAD PLOT # 0934-D | 35'x65' | 2275 | 3 | 3,025 |
| 64 | RES Mr. ATTA UR REHMAN TAHIR PLOT # 0081-D | 35'x65' | 2275 | 3 | 3,005 |
| 65 | RES Mr. ZIA UR REHMAN PLOT # 0760-E | 25'x45' | 1125 | 3 | 1,897 |
| 66 | FOR RES Mr. AMEER ALI PLOT # 0062-AA | 25'x45' | 1125 | 3 | 1,955 |
| 67 | FOR RES Mr. ARSLAN KHALID PLOT # 0301-A1 | 25'x45' | 1125 | 3 | 1,892 |
| 68 | FOR RES Mr. EISSA PLOT # 0769-E | 25'x45' | 1125 | 4 | 2,748 |
| 69 | COMM FOR MR.MUHAMMAD ASLAM AT PLOT 0086-A | 30'X40' | 1200 | 6 | 5,409 |
| 70 | RES FOR Mr. KABIR HUSSAIN BHATTI POLT # 0208-B | 50'x90' | 4500 | 3 | 13,500 |



IT Tower, Urban Developers, Executive Floor
Management Office, 73- E/1, Gulberg III,
Hali Road Lahore Pakistan
UAN (042) 111 109 111

Central Park office
Block G 31KM Main Ferozepur
Road Lahore Pakistan
UAN (042) 111 109 109



info@urbandevelopersgroup.com
www.urbandevelopersgroup.com

Email: mass_consultants@yahoo.com

| Sr | Project Description | Plot Size | Plot Area (SFT) | No of Stories | Total Covered Area (SFT) |
|----|---|-----------|-----------------|---------------|--------------------------|
| 71 | RES FOR Mr. SYAD ZAWAR HASNAIN PLOT # 0460-A1 | 25'x45' | 1125 | 3 | 2,288 |
| 72 | RES FOR Mr. SAEED AHMAD PLOT # 0462-A1 | 25'x45' | 1125 | 4 | 3,199 |
| 73 | RES FOR Mr. SARFRAZ AHMAD PLOT # 0789-C | 35'x65' | 2275 | 3 | 3,252 |
| 74 | RES FOR MR. KHURRAM RASHID PLOT # 1282-C | 20'x45' | 900 | 3 | 1,404 |
| 75 | RES FOR Mr. KAMRAN SHAHZAD PLOT # 0003-C | 50'x90' | 4500 | 3 | 5,233 |
| 76 | RES FOR Mr. HASEEB SHAMAS PLOT #0307-A1 | 20'x45' | 900 | 4 | 2,075 |
| 77 | RES FOR Mr. HASEEB SHAMAS PLOT #0307-1-A1 | 20'x45' | 900 | 4 | 2,075 |

